

# 3 lobed handle



## VTLM Black polyamide with steel insert

**Improved tightening**

- Operating element

- Materials:

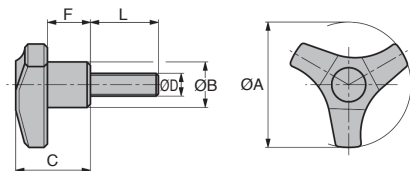
Black polyamide, matt surface finish

Chromed steel thread

### Advantages

- Highly resistant, increased tightening force

- Suitable for all hand sizes



### DISCOUNTS

Qty	1+	10+	20+	50+	100+	200+
Disc.	List	-5%	-10%	-15%	-20%	On request

Part number	ØD	ØA	ØB	C	F	L	Weight (g)	Stock*	Price each 1 to 9
VTLM6-15-45	M6	45	18	27	16	15	15,4	✓	2,16 €
VTLM6-20-45	M6	45	18	27	16	20	16,4	✓	2,16 €
VTLM6-25-45	M6	45	18	27	16	25	17,0	-	2,25 €
VTLM6-30-45	M6	45	18	27	16	30	17,4	-	2,25 €
VTLM6-40-45	M6	45	18	27	16	40	20,0	✓	2,25 €
VTLM8-15-45	M8	45	18	27	16	15	19,0	-	2,25 €
VTLM8-20-45	M8	45	18	27	16	20	20,2	-	2,42 €
VTLM8-30-45	M8	45	18	27	16	30	23,6	✓	2,42 €
VTLM8-40-45	M8	45	18	27	16	40	27,0	-	2,46 €
VTLM10-20-45	M10	45	18	27	16	20	30,0	-	2,49 €
VTLM10-30-45	M10	45	18	27	16	30	35,0	-	2,62 €
VTLM6-20-55	M6	55	20	33	19	20	22,8	-	2,46 €
VTLM6-25-55	M6	55	20	33	19	25	23,6	-	2,54 €
VTLM6-40-55	M6	55	20	33	19	40	26,8	-	2,54 €
VTLM8-20-55	M8	55	20	33	19	20	27,2	-	2,54 €
VTLM8-30-55	M8	55	20	33	19	30	30,0	✓	2,54 €
VTLM8-40-55	M8	55	20	33	19	40	33,4	✓	2,62 €
VTLM10-15-55	M10	55	20	33	19	15	32,0	-	2,80 €
VTLM10-20-55	M10	55	20	33	19	20	36,4	-	2,80 €
VTLM10-30-55	M10	55	20	33	19	30	42,0	-	2,87 €

\*Depending on availability - Dimensions in mm



# 3 lobed handle

## Black polyamide with brass insert

## VTLF

- Operating element
- Materials:

Black polyamide  
Brass insert

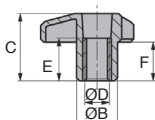
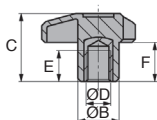
### Advantages

- Highly resistant, increased tightening force
- Suitable for all hand sizes
- Can be used outside

Improved tightening



Brass insert



Blind tapped brass insert

Through tapped brass insert

### DISCOUNTS

Qty	1+	10+	20+	50+	100+	200+
Disc.	List	-5%	-10%	-15%	-20%	On request

Part number	ØD	ØA	ØB	C	F	E	Weight (g)	Stock*	Price each 1 to 9
<b>Blind tapped brass insert</b>									
VTLFB6-45	M6	45	18	27	16	14	13,8	✓	2,95 €
VTLFB8-45	M8	45	18	27	16	14	15,6	✓	3,07 €
VTLFB10-45	M10	45	18	27	16	14	17,2	-	3,40 €
VTLFB8-55	M8	55	20	33	19	14	22,8	-	3,45 €
VTLFB10-55	M10	55	20	33	19	14	23,4	✓	3,78 €
VTLFB12-55	M12	55	20	33	19	14	25,6	✓	4,06 €
<b>Through tapped brass insert</b>									
VTLF6-45	M6	45	18	27	16	14	12,4	-	3,45 €
VTLF8-45	M8	45	18	27	16	14	13,2	✓	3,40 €
VTLF10-45	M10	45	18	27	16	14	13,2	✓	3,74 €
VTLF8-55	M8	55	20	33	19	14	18,2	-	3,74 €
VTLF10-55	M10	55	20	33	19	14	19,2	✓	3,86 €
VTLF12-55	M12	55	20	33	19	14	19,8	✓	4,22 €

\*Depending on availability - Dimensions in mm

# Three-lobe knob



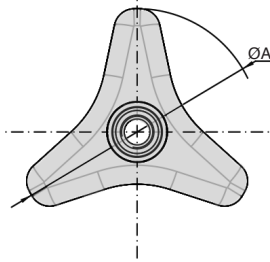
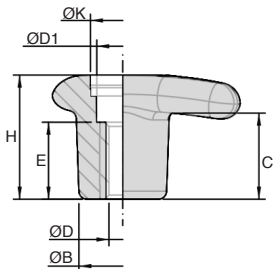
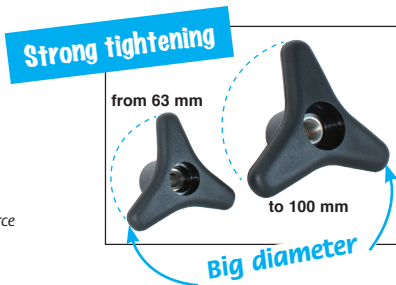
## VTLB

## Thermoplastic

- **Operating element**
- Insert with *tapped* through hole
- Working T° range -30°C to +130°C
- Materials
  - Black polyamide PA6 noir glass fiber reinforced
  - Brass or stainless steel 303 insert

### Advantages

Handwheel size up to 100mm diameter provides excellent grip and clamping force



### DISCOUNT

Qty	1+	10+	20+	50+	100+
Disc.	List	-5%	-10%	-15%	On request

Part number										Weight		Price each 1 à 9		
Brass insert	Stainless steel insert	ØA	ØB	C	ØD	E	H	ØD1	ØK	(g)	Brass	Stainless steel	Brass	Stainless steel
VTLB8-63	VTLB8-63/SS	63	21	21	M8	18,5	30	12,5	Ø15	30	-	-	7,34 €	13,08 €
VTLB10-63	-	63	21	21	M10	18,5	30	12,5	Ø15	34	-	-	7,59 €	-
VTLB10-80	VTLB10-80/SS	80	26	23	M10	25	35	13	Ø20	59	-	-	8,93 €	13,36 €
VTLB12-80	-	80	26	23	M12	25	35	13	Ø20	61	-	-	9,69 €	-
VTLB12-100	VTLB12-100/SS	100	30	25	M12	25	38	17	Ø25	87	-	-	12,57 €	18,17 €
VTLB14-100	-	100	30	25	M14	25	38	17	Ø25	89	-	-	13,61 €	-

\*Depending on availability - Dimensions in mm

## Altri prodotti...



CLQ

Cuscinetti a sfere -  
Accessorio, Spessori  
metallici centesimali a  
na...



DPAR\_DKON

Piedino antivibrante  
parabolico, Acciaio



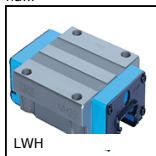
M2

Coppia ruota e vite  
senza fine, Plastica  
lavorata (delrin)



E50

Riduttore a rinvio  
angolare, da 3 a 41  
Nm



LWH

Guida lineare a sfere -  
Sfere acciaio, Carello -  
da 9320 N a 71300 N



VDSQ

Bloccaggio scorrevole  
per la regolazione,  
Bloccaggio rapido per  
prof...



CHAu

Cerniera ad avvitare,  
270°



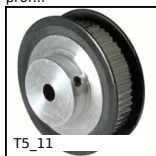
YG2

Ingranaggio dritto  
PRESTAZIONE, Acciaio  
35NCD6



PLA

Magnete piatto,  
Magnete piatto



T5\_11

Puleggia dentata di  
posizionamento tipo  
T, T5 alluminio



CAP821

Catena a tapparella  
dritta, Larga serie 821



SRG

Chiusura a leva  
regolabile, Corsa da  
96mm a 121,7mm

## Prodotti correlati



VTFL

Volantino a 3 lobi,  
Poliammide - Ottone



VTFL

Volantino a 3 lobi,  
Poliammide - Ottone



VTLM

Volantino a 3 lobi,  
Poliammide - Acciaio