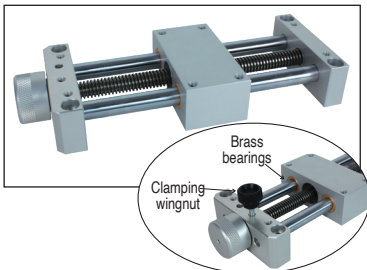


TBE10

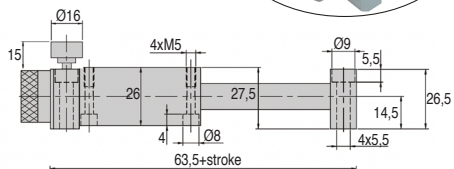
Max carried payload 1kg

- Leadscrew table for manual use
- Right hand trapezoidal leadscrew TR10x2
- Guided by 2 shaft in steel on 4 brass bearings
- Axial accuracy < 0,20mm
- With clamping wingnut and grip knob
- Materials:
Anodised aluminium and steel
- Working T° : from +5°C to +80°C

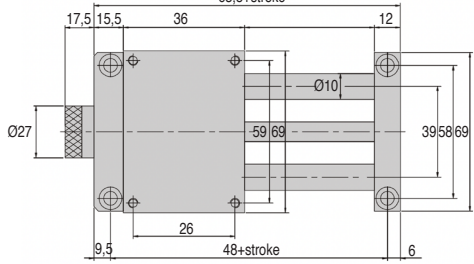
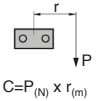
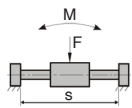


Accessories

- Base plate with ruler TBE-BASE



Admissible payload



| | Static | Dynamic |
|------------|--------|---------|
| Fmax (daN) | 10 | 2,5 |
| Cmax (Nm) | 4 | 1 |
| Mmax (Nm) | 5 | 1 |

(40mm < r < 100mm)

DISCOUNTS

| Qty | 1+ | 2+ | 3+ |
|-------|------|------|------------|
| Disc. | List | -10% | On request |

| Part number | Stroke (mm) | Max carried payload (kg) | Weight (kg) | Stock* | Price each |
|-------------|-------------|--------------------------|-------------|--------|------------|
| TBE10-50 | 50 | 1 | 0,51 | - | 241,34 € |
| TBE10-100 | 100 | 1 | 0,59 | - | 243,73 € |

*Depending on availability - Dimensions in mm

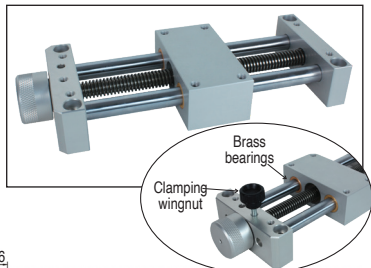


Economic Mini-table with trapezoidal leadscrew

Max carried payload 2kg

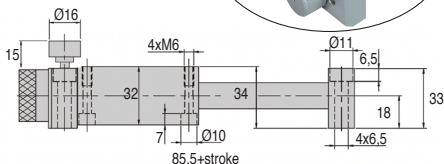
TBE12

- Leadscrew table for manual use
- Right hand trapezoidal leadscrew TR10x2
- Guided by 2 shaft in steel on 4 brass bearings
- Axial accuracy < 0,20mm
- With clamping wingnut and grip knob
- Materials:
Anodised aluminium and steel
- Working T° : from +5°C to +80°C

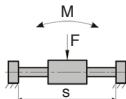


Accessories

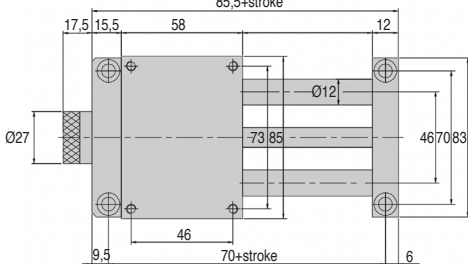
- Base plate with ruler **TBE-BASE**



Admissible payload



$$C = P(N) \times r(m)$$



| | Static | Dynamic |
|------------|--------|---------|
| Fmax (daN) | 20 | 5 |
| Cmax (Nm) | 8 | 2 |
| Mmax (Nm) | 10 | 2 |

(50mm < r < 150mm)

DISCOUNTS

| Qty | 1+ | 2+ | 3+ |
|-------|-----------|------------|------------|
| Disc. | List -10% | On request | On request |

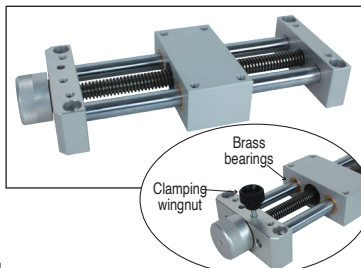
| Part number | Stroke (mm) | Max carried payload (kg) | Weight (kg) | Max carried payload | |
|-------------|-------------|--------------------------|-------------|---------------------|------------|
| | | | | Stock* | Price each |
| TBE12-50 | 50 | 2 | 0,91 | - | 272,82 € |
| TBE12-100 | 100 | 2 | 1,02 | - | 275,79 € |
| TBE12-150 | 150 | 2 | 1,13 | - | 278,77 € |
| TBE12-200 | 200 | 2 | 1,24 | - | 281,75 € |

*Depending on availability - Dimensions in mm

TBE16

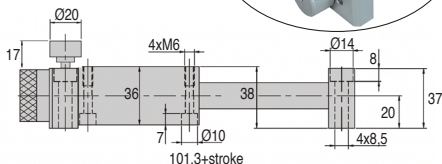
Max carried payload 5kg

- Leadscrew table for manual use
- Right hand trapezoidal leadscrew TR12x3
- Guided by 2 shaft in steel on 4 brass bearings
- Axial accuracy < 0,20mm
- With clamping wingnut and grip knob
- Materials:
Anodised aluminium and steel
- Working T° : from +5°C to +80°C

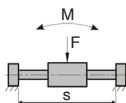


Accessories

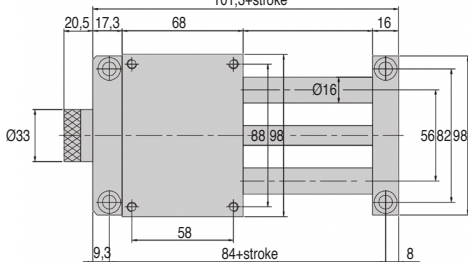
- Base plate with ruler TBE-BASE



Admissible payload



$$C = P_{(N)} \times r_{(m)}$$



| | Static | Dynamic |
|------------------------|--------|---------|
| F _{max} (daN) | 40 | 12 |
| C _{max} (Nm) | 17 | 4 |
| M _{max} (Nm) | 20 | 5 |

(60mm < r < 200mm)

DISCOUNTS

| Qty | 1+ | 2+ | 3+ |
|-------|-----------|------------|----|
| Disc. | List -10% | On request | |

| Part number | Stroke (mm) | Max carried payload (kg) | Weight (kg) | Stock* | Price each |
|-------------|-------------|--------------------------|-------------|--------|------------|
| TBE16-50 | 50 | 5 | 1,53 | - | 300,14 € |
| TBE16-100 | 100 | 5 | 1,71 | - | 303,71 € |
| TBE16-150 | 150 | 5 | 1,89 | - | 307,27 € |
| TBE16-200 | 200 | 5 | 2,07 | - | 310,83 € |

*Depending on availability - Dimensions in mm

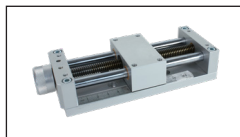
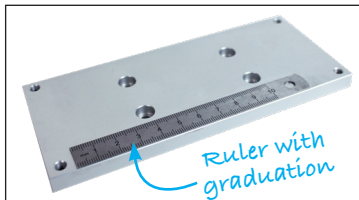


Base plate for **economic** mini-table

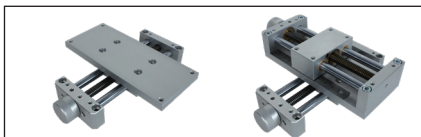
Allows X-Y cross tables

TBEBASE

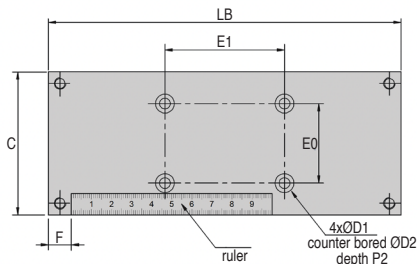
- **Base plate with ruler**
- To be screwed under the end supports
- Allows mounting in XY cross tables thanks to counterbored holes
- Ruler with graduation in mm
- Delivered with 8 fixing screws
- Material:
 - Plate Anodised aluminium
 - Stainless steel ruler
 - Zinc plated fixing screws



Simple assembly



Cross tables assembly



DISCOUNTS

| Qty | 1+ | 2+ | 3+ |
|-------|-----------|------------|----|
| Disc. | List -10% | On request | |

| Part number | For table | Stroke (mm) | C | HB | LB | E0 | E1 | F | ØD1 | ØD2 | P2 | Weight (kg) | Stock ¹ | Price each |
|----------------|-----------|-------------|----|------|-----|----|----|----|-----|-----|-----|-------------|--------------------|------------|
| | | | | | | | | | | | | | | |
| TBE10-50/BASE | TBE10 | 50 | 69 | 9,0 | 110 | 26 | 59 | 12 | 5,2 | 9 | 5,0 | 0,20 | - | 54,92 € |
| TBE10-100/BASE | TBE10 | 100 | 69 | 9,0 | 160 | 26 | 59 | 12 | 5,2 | 9 | 5,0 | 0,28 | - | 62,29 € |
| TBE12-50/BASE | TBE12 | 50 | 83 | 9,5 | 132 | 46 | 73 | 12 | 6,5 | 11 | 6,5 | 0,30 | - | 74,69 € |
| TBE12-100/BASE | TBE12 | 100 | 83 | 9,5 | 182 | 46 | 73 | 12 | 6,5 | 11 | 6,5 | 0,40 | - | 80,64 € |
| TBE12-150/BASE | TBE12 | 150 | 83 | 9,5 | 232 | 46 | 73 | 12 | 6,5 | 11 | 6,5 | 0,50 | - | 86,82 € |
| TBE12-200/BASE | TBE12 | 200 | 83 | 9,5 | 282 | 46 | 73 | 12 | 6,5 | 11 | 6,5 | 0,60 | - | 92,92 € |
| TBE16-50/BASE | TBE16 | 50 | 98 | 11,5 | 150 | 58 | 88 | 16 | 6,5 | 11 | 6,5 | 0,47 | - | 82,30 € |
| TBE16-100/BASE | TBE16 | 100 | 98 | 11,5 | 200 | 58 | 88 | 16 | 6,5 | 11 | 6,5 | 0,62 | - | 90,79 € |
| TBE16-150/BASE | TBE16 | 150 | 98 | 11,5 | 250 | 58 | 88 | 16 | 6,5 | 11 | 6,5 | 0,77 | - | 99,16 € |
| TBE16-200/BASE | TBE16 | 200 | 98 | 11,5 | 300 | 58 | 88 | 16 | 6,5 | 11 | 6,5 | 0,92 | - | 107,48 € |

¹Depending on availability - Dimensions in mm

Altri prodotti...



PSG05
Ingranaggio dritto di precisione, Acciaio 20NCD2 cementato temprato



PW_PWG2
Ruota di precisione, Bronzo



VHTM
Hexagonal headed bolt Hygienic Design®, Inox



M1
Coppia ruota e vite senza fine, Acciaio temprato



OP3_14_06
Accessorio per indicatori, Boccola di riduzione



M0
Coppia ruota e vite senza fine, Plastica lavorata (delrin)



PDM_PDV
Detectable plastic palm grip, blue thermoplastic



SRG
Chiusura a leva regolabile, Corsa da 117,4mm a 128mm



METC
Cuscinetto a collare, Bronzo autolubrificante



ESCON
Accessori per variatore di velocità 5A, Cavo USB per



PCS50SS
Pignone a catena - Inox, 12.7mm (DIN 08B-1)



CLG1
Ingranaggio dritto in plastica stampata, Nylon stampato

Prodotti correlati



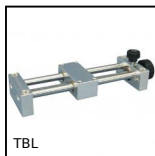
TBEbase
Base plate for economic mini-table, Allows X-Y cross tables



TBE12
Economic mini-table with trapezoidal lead screw, 2kg



TBE16
Economic mini-table with trapezoidal lead screw, 5kg



TBL
Mini tavola di posizionamento a vite metrica, 1kg