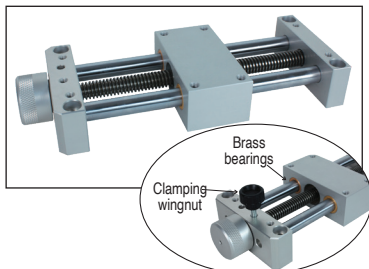


TBE10

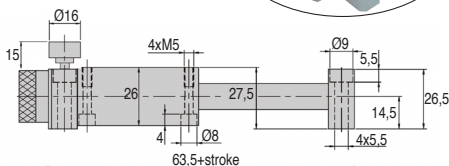
Max carried payload 1kg

- Leadscrew table for manual use
- Right hand trapezoidal leadscrew TR10x2
- Guided by 2 shaft in steel on 4 brass bearings
- Axial accuracy < 0,20mm
- With clamping wingnut and grip knob
- Materials:
Anodised aluminium and steel
- Working T° : from +5°C to +80°C

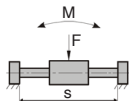


Accessories

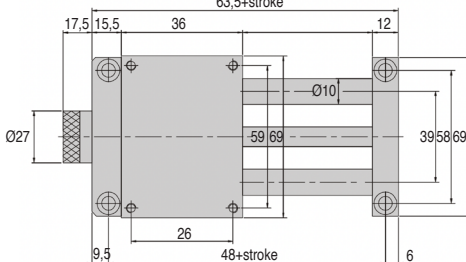
- Base plate with ruler TBE-BASE



Admissible payload



$$C = P_{(N)} \times r_{(m)}$$



	Static	Dynamic
F _{max} (daN)	10	2,5
C _{max} (Nm)	4	1
M _{max} (Nm)	5	1

(40mm < r < 100mm)

DISCOUNTS

Qty	1+	2+	3+
Disc.	List	-10%	On request

Part number	Stroke (mm)	Max carried payload (kg)	Weight (kg)	Stock*	Price each
TBE10-50	50	1	0,51	-	241,34 €
TBE10-100	100	1	0,59	-	243,73 €

*Depending on availability - Dimensions in mm

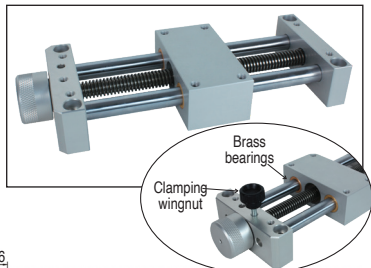


Economic Mini-table with trapezoidal leadscrew

Max carried payload 2kg

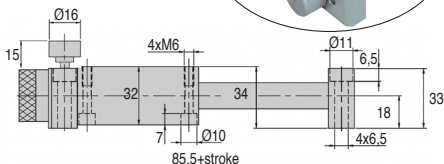
TBE12

- Leadscrew table for manual use
- Right hand trapezoidal lead screw TR10x2
- Guided by 2 shaft in steel on 4 brass bearings
- Axial accuracy < 0,20mm
- With clamping wingnut and grip knob
- Materials:
Anodised aluminium and steel
- Working T° : from +5°C to +80°C

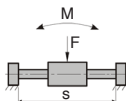


Accessories

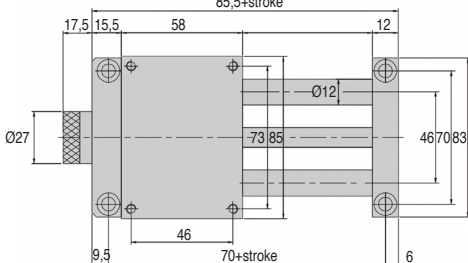
- Base plate with ruler **TBE-BASE**



Admissible payload



$$C = P(N) \times r(m)$$



	Static	Dynamic
Fmax (daN)	20	5
Cmax (Nm)	8	2
Mmax (Nm)	10	2

(50mm < r < 150mm)

DISCOUNTS

Qty	1+	2+	3+
Disc.	List -10%	On request	On request

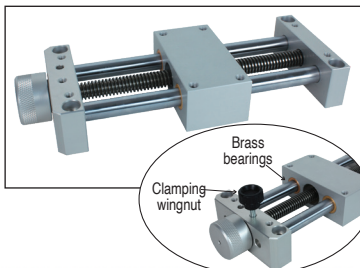
Part number	Stroke (mm)	Max carried payload (kg)	Weight (kg)	Max carried payload	
				Stock*	Price each
TBE12-50	50	2	0,91	-	272,82 €
TBE12-100	100	2	1,02	-	275,79 €
TBE12-150	150	2	1,13	-	278,77 €
TBE12-200	200	2	1,24	-	281,75 €

*Depending on availability - Dimensions in mm

TBE16

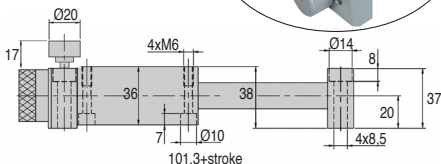
Max carried payload 5kg

- Leadscrew table for manual use
- Right hand trapezoidal leadscrew TR12x3
- Guided by 2 shaft in steel on 4 brass bearings
- Axial accuracy < 0,20mm
- With clamping wingnut and grip knob
- Materials:
Anodised aluminium and steel
- Working T° : from +5°C to +80°C

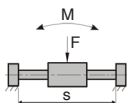


Accessories

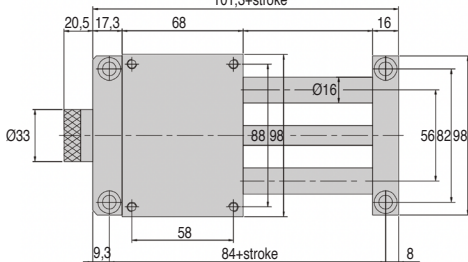
- Base plate with ruler TBE-BASE



Admissible payload



$$C = P_{(N)} \times r_{(m)}$$



	Static	Dynamic
F _{max} (daN)	40	12
C _{max} (Nm)	17	4
M _{max} (Nm)	20	5

(60mm < r < 200mm)

DISCOUNTS

Qty	1+	2+	3+
Disc.	List -10%	On request	

Part number	Stroke (mm)	Max carried payload (kg)	Weight (kg)	Stock*	Price each
TBE16-50	50	5	1,53	-	300,14 €
TBE16-100	100	5	1,71	-	303,71 €
TBE16-150	150	5	1,89	-	307,27 €
TBE16-200	200	5	2,07	-	310,83 €

*Depending on availability - Dimensions in mm

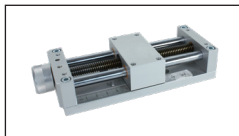
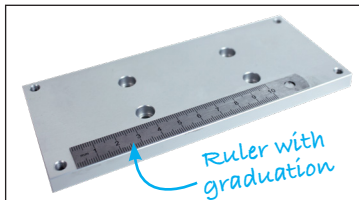


Base plate for **economic** mini-table

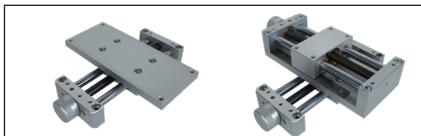
Allows X-Y cross tables

TBEBASE

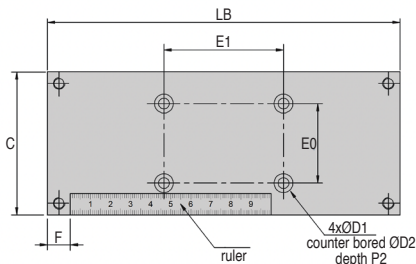
- **Base plate with ruler**
- To be screwed under the end supports
- Allows mounting in XY cross tables thanks to counterbored holes
- Ruler with graduation in mm
- Delivered with 8 fixing screws
- Material:
 - Plate Anodised aluminium
 - Stainless steel ruler
 - Zinc plated fixing screws



Simple assembly



Cross tables assembly



DISCOUNTS

Qty	1+	2+	3+
Disc.	List -10%	On request	

Part number	For table	Stroke (mm)	C	HB	LB	E0	E1	F	ØD1	ØD2	P2	Weight (kg)	Stock ¹	Price each
TBE10-50/BASE	TBE10	50	69	9,0	110	26	59	12	5,2	9	5,0	0,20	-	54,92 €
TBE10-100/BASE	TBE10	100	69	9,0	160	26	59	12	5,2	9	5,0	0,28	-	62,29 €
TBE12-50/BASE	TBE12	50	83	9,5	132	46	73	12	6,5	11	6,5	0,30	-	74,69 €
TBE12-100/BASE	TBE12	100	83	9,5	182	46	73	12	6,5	11	6,5	0,40	-	80,64 €
TBE12-150/BASE	TBE12	150	83	9,5	232	46	73	12	6,5	11	6,5	0,50	-	86,82 €
TBE12-200/BASE	TBE12	200	83	9,5	282	46	73	12	6,5	11	6,5	0,60	-	92,92 €
TBE16-50/BASE	TBE16	50	98	11,5	150	58	88	16	6,5	11	6,5	0,47	-	82,30 €
TBE16-100/BASE	TBE16	100	98	11,5	200	58	88	16	6,5	11	6,5	0,62	-	90,79 €
TBE16-150/BASE	TBE16	150	98	11,5	250	58	88	16	6,5	11	6,5	0,77	-	99,16 €
TBE16-200/BASE	TBE16	200	98	11,5	300	58	88	16	6,5	11	6,5	0,92	-	107,48 €

¹Depending on availability - Dimensions in mm

Altri prodotti...



VQTplq

Chiusura $\frac{1}{4}$ di giro -
Piastra di bloccaggio,
Montaggio con
controd...



PSG05

Ingranaggio dritto di
precisione, Acciaio
20NCD2 cementato
temprato



BLHT60

Rinvio angolare a T,
da 26 a 70 Nm



PO

Maniglia a ponte -
Multi-settore, Foro
cieco maschiato



KB_WW

Manicotto chiuso a
sfere di precisione,
Economica



MBF

Manicotto filettato di
bloccaggio, Montaggio
e regolazione rapidi



TBD

Tavola di
posizionamento a
passo inverso
manuale, 2kg



M0

Coppia ruota e vite
senza fine, Acciaio
temprato



DOM80

Accessori di
collegamento, Kit di



AC156-157

Riscontro per chiusura
a leva rigida ad



ZG2

Ingranaggio dritto in
plastica, Plastica



SSDB

Ingranaggio conico
inox, 2:1

Prodotti correlati



TBEBASE10

Economic mini-table
with trapezoidal
lead screw, 1kg



TBE12

Economic mini-table
with trapezoidal
lead screw, 2kg



TBE16

Economic mini-table
with trapezoidal
lead screw, 5kg