

# Floor mounting levelling plate



## SPIT

## Maximum load 40.000N

- Levelling support for attaching to a floor

- Materials:

Base: galvanised steel

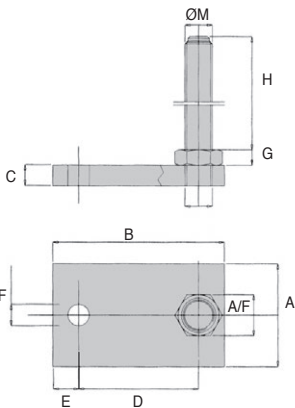
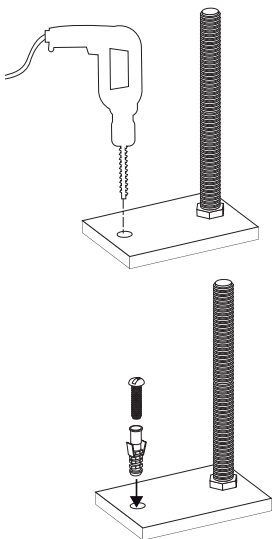
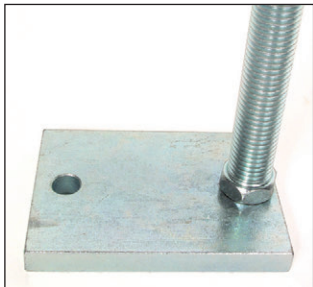
Rod: galvanised steel (nut not supplied)

### Advantages

- Capable of accepting heavy loads.

### Option

- In stainless steel or other dimension if important quantity



### DISCOUNTS

Qty.	1+	25+	50+
Disc.	List -5%	On request	

Part number	A	B	C	ØM	H	D	E	ØF	G	A/F	Max. load(N)	Stock*	Price each 1 to 24
SPIT16-150	60	100	12	M16	150	70	15	18	9	24	30000	✓	22,02 €
SPIT20-200	80	110	12	M20	200	80	15	18	9	24	40000	✓	24,61 €

\*Depending on availability - Dimensions in mm

## Altri prodotti...



SF\_ZZ  
Cuscinetto radiale a sfere, Inox



BFM2  
Dado trapezoidale, Bronzo - 2 filetti



SLB  
Pistoncino a molla, inox



GLB  
Volantino a 6 lobi filettato, Tecnopolimero - Inox



BEAB  
Manopola, stella, antibatterico



PTAf80-PAMF80  
Piede fissabile con base lamiera Ø80, Ø 80



NKIB  
Cuscinetto combinato con anello interno, Carico assiale bidirezionale



PTRSS  
Pignone tendicatenata, Per ambienti aggressivi



PDM\_PDV  
Detectable plastic palm grip, blue thermoplastic



RCC\_RCX  
Rondella sferica - DIN6319, convessa



PR125rehausse  
Extension for articulated foot Ø123, Ø 123



BTESS  
Tenditore automatico universale per tenditore, Per ambienti aggressivi

## Prodotti correlati



PARF80  
Piede senza snodo, Piede snodato oscillante fissabile Ø80



PARF110  
Piede senza snodo, Piede snodato oscillante fissabile Ø110