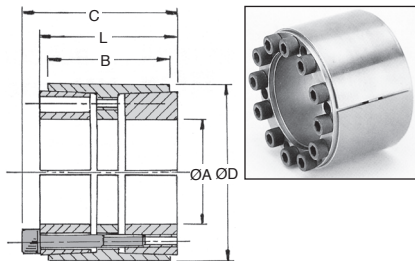


## RTL450

**High** torque

- Inserts between the shaft and the bore
- High transmissible torque
- Contact pressure spread evenly
- Easy to assembly and dismantle
- Reduced width
- Backlash free
- No constraints due to keyway
- **Increases the resistant part of the shaft**
- Suitable for alternating rotational movements
- Up to 3 units can be used together
- Material: Steel

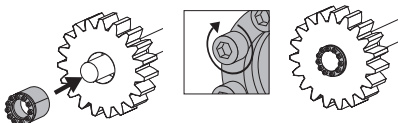


### Options

- Other diameters available (up to 300mm bore)

### Info.

- \*PN: hub surface pressure
- \*PW: shaft surface pressure



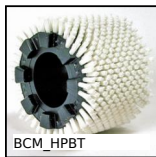
### DISCOUNTS

Qty	1+	6+	20+	40+	60+	100+
Disc	Prix	-10%	-15%	-20%	-25%	on request

Part number	ØA	ØD	B	L	C	Screw M	Tightening torque TA (Nm)	Transmissible torque + axial load T (Nm)	*Pw (N/mm <sup>2</sup> )	*PN (N/mm <sup>2</sup> )	Stock	Price
												each 1 to 5
RTL450-25-55	25	55	32	40	46	6xM6x35	17	295	295	134	✓	25,05 €
RTL450-30-55	30	55	32	40	46	6xM6x35	17	246	246	134	✓	25,75 €
RTL450-35-60	35	60	44	54	60	7xM6x45	17	174	174	101	✓	31,33 €
RTL450-38-75	38	75	44	54	62	7xM8x50	41	296	296	150	-	39,09 €
RTL450-40-75	40	75	44	54	62	7xM8x50	41	281	281	150	✓	39,09 €
RTL450-42-75	42	75	44	54	62	7xM8x50	41	268	268	150	-	42,28 €
RTL450-45-75	45	75	44	54	62	7xM8x50	41	250	250	150	-	42,28 €
RTL450-48-80	48	80	44	54	62	8xM8x50	41	207	207	124	✓	48,74 €
RTL450-50-80	50	80	56	64	72	8xM8x50	41	200	200	98	✓	48,74 €
RTL450-55-85	55	85	56	64	72	9xM8x50	41	205	205	104	✓	55,21 €
RTL450-60-90	60	90	56	64	72	10xM8x50	41	202	202	106	✓	59,38 €
RTL450-65-95	65	95	56	64	72	10xM8x50	41	187	187	100	✓	65,17 €
RTL450-70-110	70	110	70	78	88	10xM10x60	83	223	223	114	✓	88,91 €
RTL450-75-115	75	115	70	78	88	10xM10x60	83	223	223	114	✓	96,33 €
RTL450-80-120	80	120	70	78	88	11xM10x60	83	215	215	115	✓	102,56 €
RTL450-85-125	85	125	70	78	88	12xM10x60	83	215	215	115	-	109,95 €
RTL450-90-130	90	130	70	78	88	12xM10x60	83	208	208	115	-	113,33 €
RTL450-95-135	95	135	70	78	88	12xM10x60	83	208	208	115	-	128,16 €
RTL450-100-145	100	145	90	100	112	11xM12x80	145	200	200	107	-	172,14 €

Dimensions in mm

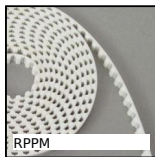
## Altri prodotti...



Spazzola cilindrica  
modulare, Filo  
poliestere PBT



Ingranaggio conico in  
plastica, 2:1



Cinghia aperta al  
metro tipo RPP, RPP8  
Poliuretano armatura  
in acciaio



Riduttore manuale,  
Barra esagonale



Impugnatura  
termoplastica a T, Con  
inserto maschiato



Ghiera autofrenante  
per cuscinetto, Ghiera  
autofrenante -  
rondella i...



Ingranaggio dritto  
acciaio, Acciaio  
20NCD2



Tappo di protezione  
esagonale,  
Tecnopolimero nero



Ruota per profili  
alluminio, Fissa



Puleggia dentata di  
trasmissione tipo



Giunto rigido in 2  
parti, Ganascia di



Anello di bloccaggio,  
Ø25 - Ø40

## Prodotti correlati



Calettatore di  
bloccaggio, Coppia  
media/elevata



Calettatore di  
bloccaggio, Coppia  
media/elevata



Calettatore di  
bloccaggio, Coppia  
media/bassa



Calettatore di  
bloccaggio, Coppia  
media/bassa