

Ste ★★★ Self-centering locking assembly

Medium/high torque

RT70

- Inserts between the shaft and the bore

- High transmissible torque
- Contact pressure spread evenly
- Easy to assembly and dismantle
- Backlash free
- No constraints due to keyway
- **Increases the resistant part of the shaft**
- Suitable for alternating rotational movements
- Materials:

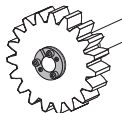
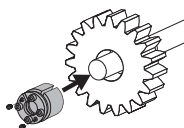
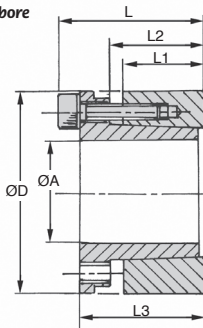
Body: steel
Screws: steel DIN 912 12.9

Options

- Other diameters available (up to 180mm bore)

Info.

- * PN: hub surface pressure
- * PW: shaft surface pressure



DISCOUNTS

Qty.	1+	6+	20+	40+	60+	100+
Disc. List	-10%	-15%	-20%	-25%	On request	

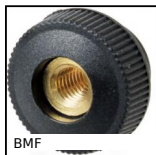
Part number	ØA	ØD	L1	L2	L3	L	Transmissible torque (Nm)	Pw (N/mm ²)	PN (N/mm ²)	Screws No.	Screws Type	Tightening torque (Nm)	Stock*	Price each 1 to 5
RT70-19-47	19	47	26	31	39	45	350	228	98	4	M6x25	17	✓	12.48 €
RT70-20-47	20	47	26	31	39	45	390	231	100	4	M6x25	17	✓	12.48 €
RT70-22-47	22	47	26	31	39	45	440	220	95	4	M6x25	17	✓	12.48 €
RT70-24-50	24	50	26	31	39	45	519	215	102	6	M6x25	17	-	13.02 €
RT70-25-50	25	50	26	31	39	45	590	230	105	6	M6x25	17	✓	13.02 €
RT70-28-55	28	55	26	31	39	45	700	220	110	6	M6x25	17	✓	14.79 €
RT70-30-55	30	55	26	31	39	45	760	200	120	6	M6x25	17	✓	14.79 €
RT70-32-60	32	60	26	31	39	45	930	230	114	8	M6x25	17	✓	16.04 €
RT70-35-60	35	60	26	31	39	45	1030	200	119	8	M6x25	17	✓	16.04 €
RT70-38-65	38	65	26	31	39	45	1240	210	124	8	M6x25	17	✓	18.23 €
RT70-40-65	40	65	26	31	39	45	1350	200	125	8	M6x25	17	✓	18.23 €
RT70-42-75	42	75	30	36	47	55	2170	236	140	6	M8x30	41	-	24.40 €
RT70-45-75	45	75	30	36	47	55	2350	236	140	6	M8x30	41	✓	24.40 €
RT70-48-80	48	80	30	36	47	55	2510	218	135	6	M8x30	41	✓	27.28 €
RT70-50-80	50	80	30	36	47	55	2580	218	135	6	M8x30	41	✓	27.28 €
RT70-55-85	55	85	30	36	47	55	3200	223	145	8	M8x30	41	✓	31.13 €
RT70-60-90	60	90	30	36	47	55	3380	198	157	8	M8x30	41	✓	33.41 €
RT70-65-95	65	95	30	36	47	55	4160	213	140	8	M8x30	41	-	35.95 €
RT70-70-110	70	110	40	46	57	67	6840	225	143	8	M10x35	83	✓	54.86 €

Dimensions in mm

Altri prodotti...



HTD5M_25
Puleggia dentata di trasmissione tipo HTD, HTD5 Alluminio



BMF
Manopola, Zigrinata - Passante



SHTC
Tavola lineare Drylin®, Nessuna manutenzione



J53
Riduttore coassiale a treni paralleli, da 0.27 a 0.90 - a treni para...



FBL4004_K7
Spazzola al metro fibre PA6 da Ø0,3 a Ø0,5, Poliammide nero 6 - me...



SH1
Ingranaggio elicoidale ad assi paralleli, Plastica lavorata (delrin)



DB
Ingranaggio conico in acciaio, 2:1



EMS
Volantino zigrinato, Zigrinato



AT5P_AT10P
Piastra di giunzione per cinghia AT, AT10



DTR
Pignone tendicateni, Ruota dentata in acciaio



PR85
Piede fissabile con snodo - poliammide, Ø 83



P70
Riduttore a ruota e vite senza fine, fino a 164 Nm

Prodotti correlati



RTL450
Calettatore di bloccaggio, Coppia elevata



RT25
Calettatore di bloccaggio, Coppia media/elevata



RT61
Calettatore di bloccaggio, Coppia media/bassa



RT61ss
Calettatore di bloccaggio, Coppia media/bassa