

### Easily installed

- Uses the space between two drive sprockets
- Self positioning
- Dampens vibration
- Self lubricating
- Working temperature: -20°C to +70°C
- Normal resistance to UV radiation
- Material: polymer

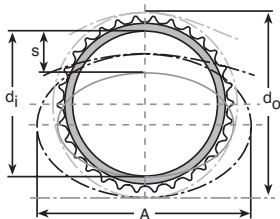
### Use

- Multiple tensioners can be used in series on long chains or in parallel on multiple chains
- On triple chains, tensioners are only needed on inner and outer strands

### Advantages

- Works equally as well on vertically or diagonally mounted chains
- Does not require fixing or special installation

Very easy  
to use



### DISCOUNTS

Qty.	1+	6+	21+
Disc.	List	-5%	On request

Part number	No. of teeth	Ref. ISO	Pitch (mm)	do	Internal diameter di	Max. deviation S	A	Static force of max. expansion (N)	Max. chain speed (m/s)	Stock*	Price each 1 to 5
RLR05-030	30	05B	8,00	76,5	65,0	20	104,0	2,9	5,0	-	97,81 €
RLR06-030	30	06B	9,52	91,1	73,0	25	122,0	15,2	5,2	✓	84,76 €
RLR06-036	36	06B	9,52	109,0	89,5	25	143,0	28,5	5,2	✓	95,95 €
RLR08-026	26	08B	12,70	102,1	84,5	24	135,8	15,7	7,5	✓	78,87 €
RLR08-030	30	08B	12,70	121,5	98,0	28	161,6	22,0	8,6	✓	91,04 €
RLR08-034	34	08B	12,70	137,5	114,4	30	165,0	22,0	8,8	✓	103,18 €
RLR10-026	26	10B	15,88	128,4	105,0	28	153,0	28,2	4,2	✓	96,16 €
RLR10-030	30	10B	15,88	148,0	124,6	33	177,0	23,0	8,8	-	110,63 €
RLR10-034	34	10B	15,88	170,0	141,0	38	217,0	45,1	8,8	-	125,58 €
RLR12-026	26	12B	19,05	155,0	127,6	35	209,5	39,2	5,4	-	116,25 €
RLR12-030	30	12B	19,05	182,2	145,0	40	241,7	65,0	6,2	-	134,23 €

\*Depending on availability - Dimensions in mm

## Installation

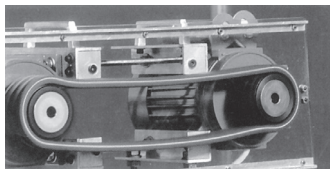
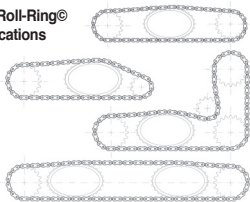
Roll-Ring® chain tensioners do not require any maintenance and can be installed on practically all chain drive systems. **Their installation takes virtually no time and is inexpensive.** The only conditions that must be met to be able to use them are:

- The gap between the chain strands must be sufficiently large.
- The distance between the chain sprockets must be sufficiently large.

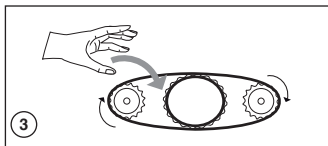
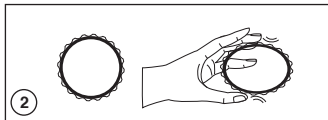
We recommend that you position the tensioner between two chain strands so that there is at least the equivalent of one chain pitch between the Roll-Ring® and the smallest sprocket. The Roll-Ring® can also be mounted in an alternative but efficient manner to that previously described, simply verify that the pre-load is sufficiently high. We do however; recommend that you carry out tests if this is done.

Roll-Ring® chain tensioners can be used in series on the same chain strand. They can also be used in parallel on each strand of a multiple strand chain. For example, a triple strand chain requires two Roll-Ring® tensioners on the outside strands.

### Typical Roll-Ring® applications



Vibrations on a non tensioned chain



## Advantages



Reduced installation time



No additional machining required



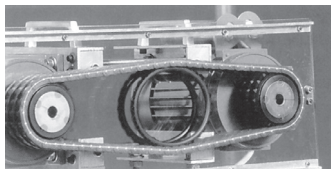
Reduced noise



Easy installation



Maintenance free



The Roll-Ring® tensions and dampens the chain

## Altri prodotti...



INS\_BR

Boccola autofilettante  
Ottone, Ottone



ACLBTS

Sistema di chiusura  
per profili alluminio,  
Squadra per blocca  
porta ...



BH01

Cuscinetto radiale  
flangiato, Montaggio :  
pressione e colla



BLHM70

Rinvio angolare, fino a  
128 Nm



SLBE

Pistoncino a molla,  
Anello distanziatore  
per pistoncino a molla  
SLB



DOMI30

Accessori di  
collegamento, Kit di  
fissaggio



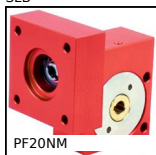
CHAC4040SS

Cerniera, Quadrata  
con rivetto e fori



HLA19

Rinvio angolare a  
dentatura spiroidale,  
Fino a 43Nm



PF20NM

Riduttore a ruota e  
vite senza fine, fino a



PDM\_PDV

Detectable plastic  
palm grip, by metal



FBL6000\_K19

Spazzola al metro,  
Crine di cavallo nero



BCH\_SS

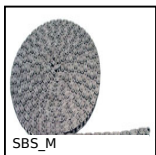
Pomello a fungo inox,  
M3 a M8

## Prodotti correlati



SUA4

Catena semplice al  
metro, Acciaio



SBS\_M

Catena semplice al  
metro, Inox



TCXR

Tenditore per catena  
automatico, Con  
pignone inox



TCLar

Tenditore per catena  
automatico, Con  
pattino largo