

- Ideal gearbox for use in the food industry
- Ratios from 7.5:1 to 60:1
- 2-stage reduction
- B14 flange
- Rounded and polished surfaces to avoid material retention
- Lubricated using food quality grease
- 92% efficient
- Material:
  - 316 stainless steel housing

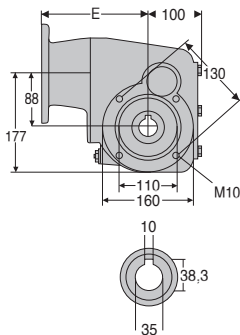
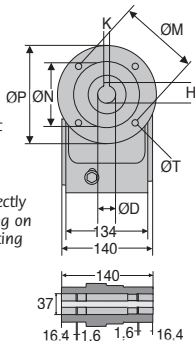


### Accessories

- Can be used with a DER 4-pole motor to create a motor-gearbox
- Torque arms, mounting bracket and protective cover

### Info

- All information is engraved directly on to gearbox rather than being on a tag plate to avoid accumulating dirt etc.



Output shaft

### Flange dimensions

	ØD	K	H	ØP	ØM	ØN	E	ØT
Flange 71B14	14	5	16,3	105	85	70	162	6,5
Flange 80B14	19	6	21,8	120	100	80	182	6,5
Flange 90B14	24	8	27,3	140	115	95	182	9

### DISCOUNTS

Qty	1+	2+	4+
Disc.	Net	-5%	On request

Part N°			Nominal reduction ratio	Actual reduction ratio	Price each
Bride 71B14	Bride 80B14	Bride 90B14			
		RFK58B-7,5-90B14/SS	7,5	7,48	1 688,01 €
		RFK58B-10-90B14/SS	10	9,84	1 688,01 €
		RFK58B-12-90B14/SS	12,5	12,49	1 688,01 €
	RFK58B-15-80B14/SS	RFK58B-15-90B14/SS	15	15,09	1 688,01 €
	RFK58B-20-80B14/SS	RFK58B-20-90B14/SS	20	19,84	1 688,01 €
	RFK58B-25-80B14/SS	RFK58B-25-90B14/SS	25	25,19	1 688,01 €
	RFK58B-30-80B14/SS	RFK58B-30-90B14/SS	30	30,24	1 688,01 €
	RFK58B-40-80B14/SS	RFK58B-40-90B14/SS	40	40,13	1 688,01 €
RFK58B-50-71B14/SS	RFK58B-50-80B14/SS	RFK58B-50-90B14/SS	50	48,18	1 688,01 €
RFK58B-60-71B14/SS	RFK58B-60-80B14/SS	RFK58B-60-90B14/SS	60	59,04	1 688,01 €

All dimensions in mm

## Altri prodotti...



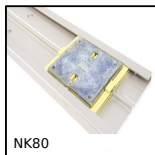
VELM4

Supporto avvitabile per rotolo a strappo fermacavi, Poliammide



PTA150

Piede snodato con base stampata Ø150, Ø 150



NK80

Guida mini Drylin® N, Larghezza 80mm



GAL22

Ruota per trasportatore, Acciaio zincato



ES

Bipod support base, Plastic



PRES4HR

Pressa manuale da banco, Pressione fino a 600kg



ACLAPA

Sistema di chiusura, Battuta a calamita



PSPD40

Manopola a pressione, PVC nero



DB

Ingranaggio conico in acciaio, 2:1



PTA50ssEB

Piede snodato con base stampata Ø50, Piede snodato



DOG258

Motoriduttore DC 12V e 24V DC, da 12 a 15 Nm



BOXKU

Box kit di chiavette a disco, Box kit di chiavette a disco - acciaio

## Prodotti correlati



DER71

Motore inox AC asincrono da 0,25 a 0,37kW, 0.25 a 0.37kW



DER80

Motore inox AC asincrono da 0,55 a 0,75kW, 0.55 a 0.75kW



DER90

Motore inox AC asincrono da 1,1 a 1,5kW, 1.1 a 1.5kW



RFKfp

Riduttore inox - accessori, Piede di supporto