

- **Ideal gearbox for use in the food industry**
- Ratios from 7.5:1 to 60:1
- 2-stage reduction
- B14 flange
- Rounded and polished surfaces to avoid material retention
- Lubricated using food quality grease
- 92% efficient
- Material:
 - 316 stainless steel housing

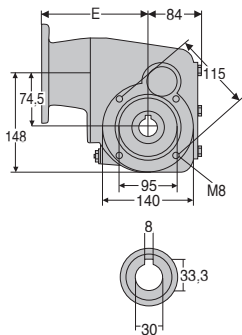
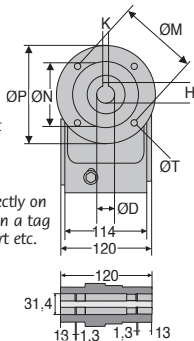


Accessories

- Can be used with a DER 4-pole motor to create a motor-gearbox
- Torque arms, mounting bracket and protective cover

Info

- All information is engraved directly on to gearbox rather than being on a tag plate to avoid accumulating dirt etc.



Output shaft

Flange dimensions

	ØD	K	H	ØP	ØM	ØN	E	ØT
Flange 71B14	14	5	16,3	105	85	70	145,5	6,5
Flange 80B14	19	6	21,8	120	100	80	165,5	6,5
Flange 90B14	24	8	27,3	140	115	95	165,5	9

DISCOUNTS

Qty	1+	2+	4+
Disc.	Net	-5%	On request

Part N°			Nominal reduction ratio	Actual reduction ratio	Price each
Flange 71B14	Flange 80B14	Flange 90B14			
		RFK48B-7,5-90B14/SS	7,5	7,48	1 352,79 €
		RFK48B-10-90B14/SS	10	9,84	1 352,79 €
		RFK48B-12-90B14/SS	12,5	12,49	1 352,79 €
	RFK48B-15-80B14/SS	RFK48B-15-90B14/SS	15	15,09	1 352,79 €
	RFK48B-20-80B14/SS	RFK48B-20-90B14/SS	20	19,84	1 352,79 €
	RFK48B-25-80B14/SS	RFK48B-25-90B14/SS	25	25,19	1 352,79 €
	RFK48B-30-80B14/SS	RFK48B-30-90B14/SS	30	30,24	1 352,79 €
RFK48B-40-71B14/SS	RFK48B-40-80B14/SS	RFK48B-40-90B14/SS	40	40,13	1 352,79 €
RFK48B-50-71B14/SS	RFK48B-50-80B14/SS	RFK48B-50-90B14/SS	50	48,18	1 352,79 €
RFK48B-60-71B14/SS	RFK48B-60-80B14/SS	RFK48B-60-90B14/SS	60	59,44	1 352,79 €

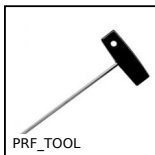
All dimensions in mm

Altri prodotti...



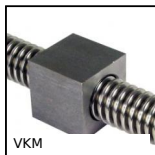
MSP23

Inserto con piastrina a incollare Masterplate®, Cilindrico Ø23 con...



PRF_TOOL

Attrezzi, Chiave di montaggio



VKM

Dado quadrato in acciaio, Acciaio - 1 filetto



CHA1056-UPA

Cerniera su facciata in poliammide, Poliammide nera



HTD8M_20

Puleggia dentata di trasmissione tipo HTD, HTD8 Acciaio



SBF

Open flange bearing unit for food industry, cover



TBE16

Economic mini-table with trapezoidal leadscrew, 5kg



H02SS

Giunto cardanico semplice ad aghi - inox, Sollecitazioni importante ...



BEF

Vite a ricircolo di sfere miniatura, Supporto con cuscinetto



NKXR

Cuscinetto combinato senza anello interno, Needle and cylindrical



FDS

Flexible drive shaft, Masterflex® Steel, with PVC casing



BOX-TOR-DRING

Valigetta di guarnizioni toriche in nitrile, Flange seals

Prodotti correlati



DER71

Motore inox AC asincrono da 0,25 a 0,37kW, 0.25 a 0.37kW



DER80

Motore inox AC asincrono da 0,55 a 0,75kW, 0.55 a 0.75kW



DER90

Motore inox AC asincrono da 1,1 a 1,5kW, 1.1 a 1.5kW



RFKfp

Riduttore inox - accessori, Piede di supporto