

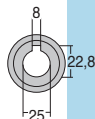
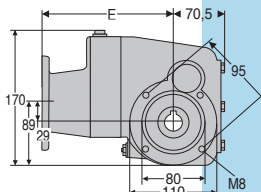
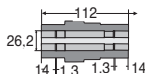
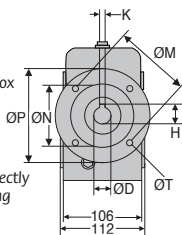
- **Ideal gearbox for use in the food industry**
- Ratios from 50:1 to 300:1
- 3-stage reduction
- B14 or B5 flange
- Rounded and polished surfaces to avoid material retention
- Lubricated using food quality grease
- 90% efficient
- Material:
316 stainless steel housing

Accessories

- Can be used with a DER 4-pole motor to create a motor-gearbox
- Torque arms, mounting bracket and protective cover

Info

- All information is engraved directly on to gearbox rather than being on a tag plate to avoid accumulating dirt etc.



Output shaft

Flange dimensions

	ØD	K	H	ØP	ØM	ØN	E	ØT
Flange 63B5	11	4	12,8	140	115	95	151	9
Flange 71B14	14	5	16,3	105	85	70	158	7
Flange 80B14	19	6	21,8	120	100	80	178	7

DISCOUNTS

Qty	1+	2+	4+
Disc.	Net	-5%	On request

Part N°			Nominal reduction ratio	Actual reduction ratio	Price each
Flange 63B5	Flange 71B14	Flange 80B14			
RFK38C-50-63B5/SS	RFK38C-50-71B14/SS	RFK38C-50-80B14/SS	50	52,48	1 260,90 €
RFK38C-60-63B5/SS	RFK38C-60-71B14/SS	RFK38C-60-80B14/SS	60	63,33	1 260,90 €
RFK38C-75-63B5/SS	RFK38C-75-71B14/SS		75	73,33	1 260,90 €
RFK38C-100-63B5/SS	RFK38C-100-71B14/SS		100	101,27	1 260,90 €
RFK38C-125-63B5/SS	RFK38C-125-71B14/SS		125	122,22	1 260,90 €
RFK38C-150-63B5/SS	RFK38C-150-71B14/SS		150	151,56	1 260,90 €
RFK38C-200-63B5/SS			200	196,43	1 260,90 €
RFK38C-250-63B5/SS			250	243,57	1 260,90 €
RFK38C-300-63B5/SS			300	302,5	1 260,90 €

All dimensions in mm

0 825 88 6000

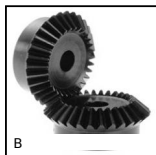
Service 0,15 €/min
+ prix appel

Fax

Altri prodotti...



SSDB
Ingranaggio conico
inox, 2:1



B
Ingranaggio conico -
Acciaio 60C40, 1:1



CMM
Testa a snodo
maschio DIN
ISO12240-4, Acciaio /
bronzo



GSA_A
Molla a gas regolabile,
Acciaio



PRF_ART
Cerniere e giunti. Con
maniglia di serraggio



MDB_MTB
Ingranaggio conico in
plastica stampata ,
2:1



HLU
Volantino con razze,
Alluminio



SSDB
Ingranaggio conico
inox, 2:1



HLC24
Rinvio angolare a
dentatura spiroidale,



LFM2
Vite trapezoidale
acciaio, Acciaio



HTD5M-BAR
Barra dentata per
cinghia RPP, HTD5



DOMI80
Kit di raccordo, Kit di
raccordo XY

Prodotti correlati



DER63
Motore inox AC
asincrono 0,18kW,
0.18kW



DER71
Motore inox AC
asincrono da 0,25 a
0,37kW, 0.25 a
0.37kW



DER80
Motore inox AC
asincrono da 0,55 a
0,75kW, 0.55 a
0.75kW



RFKfp
Riduttore inox -
accessori, Piede di
supporto