

# Hypoid gearbox

Sta

## RFK38B

## Torque up to 200Nm

- Ideal gearbox for use in the food industry
- Ratios from 7.5:1 to 60:1
- 2-stage reduction
- B14 flange
- Rounded and polished surfaces to avoid material retention
- Lubricated using food quality grease
- 90% efficient
- Material:
  - 316 stainless steel housing

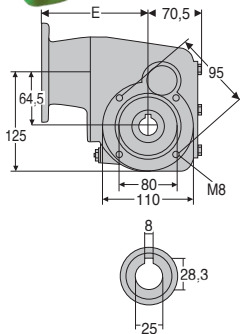
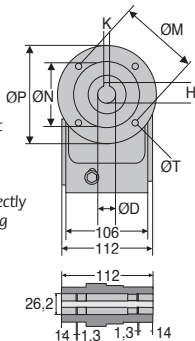


### Accessories

- Can be used with a DER 4-pole motor to create a motor-gearbox
- Torque arms, mounting bracket and protective cover

### Info

- All information is engraved directly on to gearbox rather than being on a tag plate to avoid accumulating dirt etc.



Output shaft

### Flange dimensions

	ØD	K	H	ØP	ØM	ØN	E	ØT
Flange 71B14	14	5	16,3	105	85	70	112,5	7
Flange 80B14	19	6	21,8	120	100	80	132,5	7
Flange 90B14	24	8	27,3	140	115	95	132,5	9

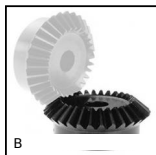
### DISCOUNTS

Qty	1+	2+	4+
Disc.	Net	-5%	On request

Part N°			Nominal reduction ratio	Actual reduction ratio	Price each
Flange 71B14	Flange 80B14	Flange 90B14			
	RFK38B-7.5-80B14/SS	RFK38B-7.5-90B14/SS	7,5	7,6	1 051,60 €
	RFK38B-10-80B14/SS	RFK38B-10-90B14/SS	10	10,5	1 051,60 €
	RFK38B-12-80B14/SS	RFK38B-12-90B14/SS	12,5	12,67	1 051,60 €
RFK38B-15-71B14/SS	RFK38B-15-80B14/SS	RFK38B-15-90B14/SS	15	14,67	1 051,60 €
RFK38B-20-71B14/SS	RFK38B-20-80B14/SS	RFK38B-20-90B14/SS	20	20,25	1 051,60 €
RFK38B-25-71B14/SS	RFK38B-25-80B14/SS	RFK38B-25-90B14/SS	25	24,44	1 051,60 €
RFK38B-30-71B14/SS	RFK38B-30-80B14/SS	RFK38B-30-90B14/SS	30	30,31	1 051,60 €
RFK38B-40-71B14/SS	RFK38B-40-80B14/SS		40	39,29	1 051,60 €
RFK38B-50-71B14/SS	RFK38B-50-80B14/SS		50	48,71	1 051,60 €
RFK38B-60-71B14/SS	RFK38B-60-80B14/SS		60	60,5	1 051,60 €

All dimensions in mm

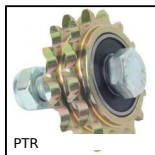
## Altri prodotti...



B  
Ingranaggio conico -  
Acciaio 60C40, 1:1



PLN  
Distanziatore  
cilindrico,  
termoplastica



PTR  
Pignone tendicatena,  
Per applicazioni  
correnti



M1  
Vite senza fine,  
Acciaio temprato



CLG1  
Ingranaggio dritto in  
plastica stampata ,  
Nylon stampato



CHAR  
Cerniera a molla,  
avvitabile



LVT  
Mini martinetto  
motorizzato 2A, 2  
ampere



T10\_21\_AL  
Puleggia dentata di  
posizionamento tipo  
T, Serie economica -  
T10 all...



ACL-APB  
Sistema di chiusura,  
Fermporta magnetico



E60  
Riduttore a rinvio  
angolare, da 4.50 a



PM3  
Vite senza fine,  
Acciaio temprato



PR821  
Ruota di rinvio, Serie  
821 e 805

## Prodotti correlati



DER71  
Motore inox AC  
asincrono da 0,25 a  
0,37kW, 0.25 a  
0.37kW



DER80  
Motore inox AC  
asincrono da 0,55 a  
0,75kW, 0.55 a  
0.75kW



DER90  
Motore inox AC  
asincrono da 1,1 a  
1,5kW, 1.1 a 1.5kW



RFKfp  
Riduttore inox -  
accessori, Piede di  
supporto