

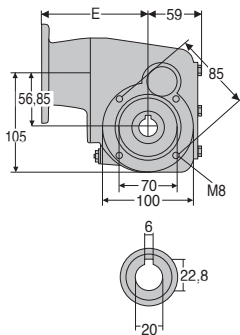
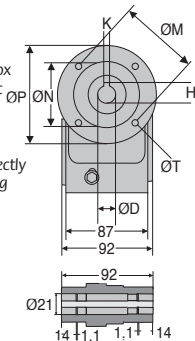
- **Ideal gearbox for the food industry**
- Ratios from 7.5:1 to 60:1
- 2-stage reduction
- B14 flange
- Rounded and polished surfaces to avoid material retention
- Lubricated using food quality grease
- 92% efficient
- Material:  
316 stainless steel housing

### Accessories

- Can be used with a DER 4-pole motor to create a motor-gearbox
- Torque arms, mounting bracket and protective cover

### Info

- All information is engraved directly on to gearbox rather than being on a tag plate to avoid accumulating dirt etc.



Output shaft

### Flange dimensions

	ØD	K	H	ØP	ØM	ØN	E	ØT
Flange 71B14	14	5	16,3	105	85	70	112,5	7
Flange 80B14	19	6	21,8	120	100	80	132,5	7
Flange 90B14	24	8	27,3	140	115	95	132,5	9

### DISCOUNTS

Qty	1+	2+	4+
Disc	Net	-5%	On request

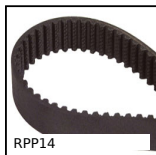
Part N°			Nominal reduction ratio	Actual reduction ratio	Price each
Flange 71B14	Flange 80B14	Flange 90B14			
RFK28B-7.5-71B14/SS	RFK28B-7.5-80B14/SS	RFK28B-7.5-90B14/SS	7,5	7,73	832,09 €
RFK28B-10-71B14/SS	RFK28B-10-80B14/SS	RFK28B-10-90B14/SS	10	10,47	832,09 €
RFK28B-12-71B14/SS	RFK28B-12-80B14/SS	RFK28B-12-90B14/SS	12,5	12,47	832,09 €
RFK28B-15-71B14/SS	RFK28B-15-80B14/SS		15	14,92	832,09 €
RFK28B-20-71B14/SS	RFK28B-20-80B14/SS		20	20,21	832,09 €
RFK28B-25-71B14/SS	RFK28B-25-80B14/SS		25	24,07	832,09 €
RFK28B-30-71B14/SS	RFK28B-30-80B14/SS		30	29,33	832,09 €
RFK28B-40-71B14/SS			40	40,09	832,09 €
RFK28B-50-71B14/SS			50	48,86	832,09 €
RFK28B-60-71B14/SS			60	58,36	832,09 €

All dimensions in mm

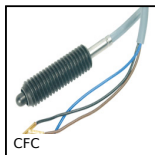
## Altri prodotti...



ZBRA  
Ingranaggio conico in  
plastica, 1:1



RPP14  
Cinghia di  
trasmissione RPP,  
RPP14



CFC  
Pressore a molla con  
esagono incassato, A  
contatto elettrico



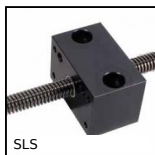
DB  
Ingranaggio conico -  
Acciaio 60C40, 2:1



PCS50K  
Pignone a catena  
dentatura temprata,  
12.7mm (DIN08B-1)



GB-RA  
Ingranaggio dritto  
ottone, Ottone  
CuZn39Pb3



SLS  
Supporto per vite  
trapezoidale,  
Supporto Drylin®  
flottante



SF\_ZZ  
Cuscinetto radiale a  
sfere, Inox



KB\_WW  
Manicotto chiuso a  
sfere di precisione,  
Economica



SLBS  
Pistoncino a molla,  
Tutto inox



HAS  
Rondella girevole, Vite  
con spalla a testa  
piatta con intaglio



PRF\_BM  
Elementi di  
ancoraggio, Fissaggio  
centrale per piede

## Prodotti correlati



RFVbr  
Riduttore inox a ruota  
e vite senza fine,  
Braccio di reazione



DER71  
Motore inox AC  
asincrono da 0,25 a  
0,37kW, 0.25 a  
0.37kW



DER80  
Motore inox AC  
asincrono da 0,55 a  
0,75kW, 0.55 a  
0.75kW



DER90  
Motore inox AC  
asincrono da 1,1 a  
1,5kW, 1.1 a 1.5kW