

- Allows vacuum suction cups to be integrated into a handling system

- Materials :

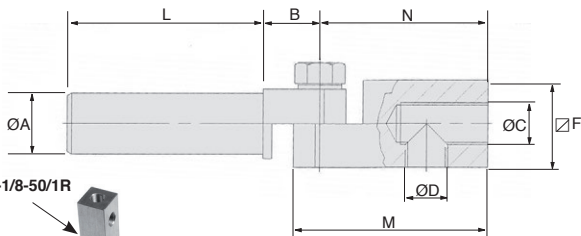
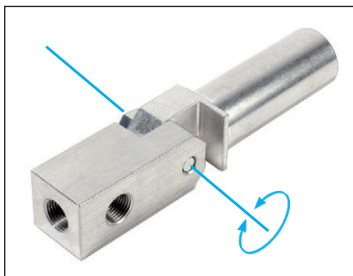
Aluminium

Screws : steel

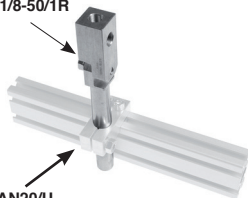
Advantages

- Infinitely variable angle of adjustment
- Easy, flexible mounting

NEW!



PV20-1/8-50/1R



BAN20/U

Typical application

DISCOUNTS

Qty	1+	10+	30+
Disc.	List -5%	On request	

Part number	ØA	B	ØC	ØD	L	M	∇F	N	Weight (g)	Price each 1 to 9
PV20-1/8-50/1R	20	15	G1/8"	G1/8"	50	47	20	41	72	47,53 €
PV20-1/8-100/1R	20	15	G1/8"	G1/8"	100	47	20	41	87	49,57 €
PV20-1/8-150/1R	20	15	G1/8"	G1/8"	150	47	20	41	103	51,60 €
PV20-1/4-50/1R	20	15	G1/4"	G1/4"	50	49	25	43	93	48,55 €
PV20-1/4-100/1R	20	15	G1/4"	G1/4"	100	49	25	43	106	50,59 €
PV20-1/4-150/1R	20	15	G1/4"	G1/4"	150	49	25	43	123	52,62 €

Dimensions in mm

Altri prodotti...



LSAG

Albero scanalato a sfere, Carello - da 514 N a 15386 N



UTKswr

Guida lineare Utilitrack®, Profilo guida a V



PRF_SDD

Supporto per sensore Ø12, Ø12



PT820

Pignone di trazione, Serie 820 e 815



PGMT

Maniglia a ponte a fissaggio anteriore, Inox



INO

Ingranaggio interno, Plastica lavorata (delrin)



PF30

Riduttore a ruota e vite senza fine, fino a 8.80 Nm



ACLCHARJ

Cerniera ad avvitare, Adjusts in 2 directions



WS10

Guida modulabile Drylin® W, Binario



DIV_SS

Pistoncino a molla, Bloccabile - Inox



BOXsap

Box kit di spine elastiche ISO8752,



GAL21

Ruota per trasportatore, Plastica

Prodotti correlati



PV2R

Braccio portaventosa orientabile, Serraggio rinforzato