

Flexible tube handle



PSPT

For Ø18 - Ø33 tubes

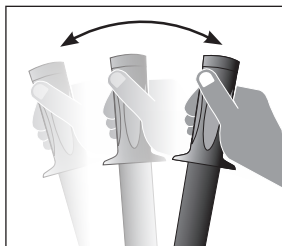
- Tube handle with collar
- Smooth interior
- Material:
Black PVC

Assembly

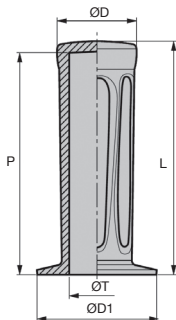
- Fit using a mallet,
no adhesive required

Advantages

- Resists oil, shocks and low temperatures



Typical application



DISCOUNTS

Qty	1+	60+	100+	200+
Disc.	List	-5%	-10%	On request

Part number	Tube		ØD	ØD1	P	Weight (g)	Stock*	Price each 1 to 59
	ØT	L						
PSPT18-115	18-19	115	31	44	110	62	✓	3,15 €
PSPT20-115	20-21	115	31	44	110	56	✓	2,79 €
PSPT22-115	22-23	115	31	44	110	46	✓	2,42 €
PSPT24-125	24-25	125	36	49	120	72	✓	3,60 €
PSPT26-125	26	125	36	49	120	60	✓	3,15 €
PSPT27-125	27-28	125	36	49	120	50	✓	3,03 €
PSPT29-125	29	125	36	49	120	50	✓	3,03 €
PSPT30-130	30	130	42	51	125	92	✓	3,60 €
PSPT33-130	33	130	42	51	125	74	✓	3,15 €

*Depending on availability - Dimensions in mm

Conical flexible shaft handle Ø20

For shafts Ø6 to Ø12

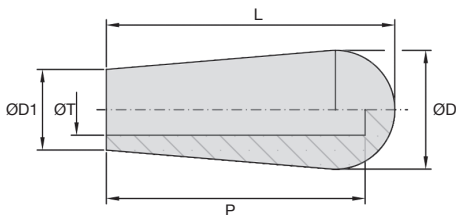
PSPE20

Conical handle

- Smooth blind hole
- Working T°: 0°C to +70°C
- Material:
Black PVC

Assembly

- Fit using a mallet, no adhesive required



DISCOUNTS

Qty	1+	60+	100+	200+
Disc.	List	-5%	-10%	On request

Part number	ØD	ØD1	ØT	L	P	Weight (g)	Stock*	Price each 1 to 59
PSPE20-43-6	20	14	6	43	40	11	-	1,74 €
PSPE20-43-7	20	14	7	43	40	10	-	1,65 €
PSPE20-43-8	20	14	8	43	40	10	-	1,59 €
PSPE20-43-10	20	14	10	43	40	9	-	1,53 €
PSPE20-43-12	20	14	12	43	40	8	-	1,47 €

*Depending on availability - Dimensions in mm

Conical flexible shaft handle Ø22

PSPE22

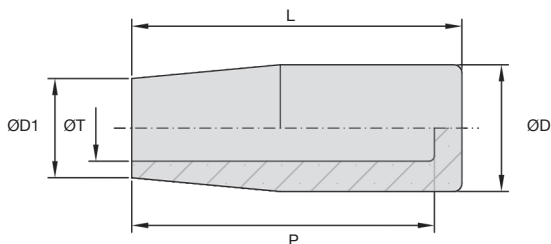
For shafts Ø7 to Ø14

Conical handle

- Smooth blind hole
- Working T°: 0°C to +70°C
- Material:
Black PVC

Assembly

- Fit using a mallet, no adhesive required



DISCOUNTS

Qty	1+	60+	100+	200+
Disc.	List	-5%	-10%	On request

Part number	ØD	ØD1	ØT	L	P	Weight (g)	Stock*	Price each
							1 to 59	
PSPE22-60-7	22	17	7	60	58	24	-	2,76 €
PSPE22-60-8	22	17	8	60	58	23	-	2,58 €
PSPE22-60-9	22	17	9	60	58	23	-	2,49 €
PSPE22-60-10	22	17	10	60	58	22	-	2,43 €
PSPE22-60-12	22	17	12	60	58	21	-	2,31 €
PSPE22-60-14	22	17	14	60	58	20	-	2,25 €

*Depending on availability - Dimensions in mm

Flexible tube handle

For tubes Ø12 to Ø22

PSPD18

Knurled cylindrical handle

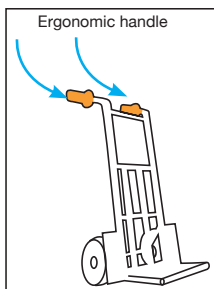
- Smooth blind hole
- Working T°: 0°C to +70°C
- Material:
Black PVC

Assembly

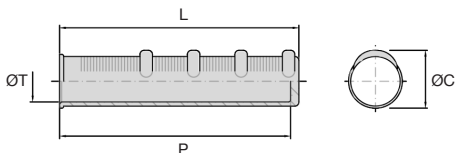
- Fit using a mallet, no adhesive required

Advantages

- Ergonomic handle for excellent grip



Typical application



DISCOUNTS

Qty	1+	60+	100+	200+
Disc.	List	-5%	-10%	On request

Part number	L	ØT	ØC	P	Weight (g)	Stock*	Price each 1 to 59
PSPD18-118-12	118	12	28	113	52	-	4,14 €
PSPD18-118-14	118	14	28	113	45	-	3,84 €
PSPD18-118-16	118	16	28	113	40	-	3,54 €
PSPD18-118-18	118	18	28	113	35	-	3,18 €
PSPD18-118-20	118	20	28	113	28	-	2,43 €
PSPD18-118-21	118	21	28	113	26	-	2,25 €
PSPD18-118-22	118	22	28	113	22	-	2,07 €
PSPD18-118-22L	118	22	28	113	19	-	2,13 €

*Depending on availability - Dimensions in mm

HPC

CAT NEW
01/2023

www.hpceurope.com

Tel. +33(0)4 37 496 496

Flexible tube handle

PSPD40

For tubes Ø18 and Ø22

Knurled cylindrical handle

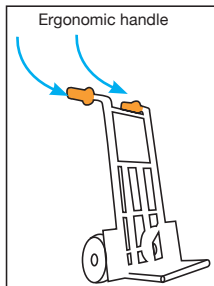
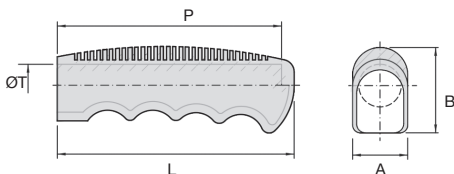
- Smooth blind hole
- Working T°: 0°C to +70°C
- Material:
Black PVC

Assembly

- Fit using a mallet, no adhesive required

Advantages

- Ergonomic handle for excellent grip



Typical application

DISCOUNTS

Qty	1+	60+	100+	200+
Disc.	List	-5%	-10%	On request

Part number	L	A	B	ØT	P	Weight (g)	Stock*	Price each 1 to 59
PSPD40-112-18	112	26	40	18	106	49	-	4,59 €
PSPD40-112-22	112	26	40	22	106	47	-	4,59 €

*Depending on availability - Dimensions in mm

Altri prodotti...



CHAFR-MINI

Cerniera, A frizione



OP3

Indicatore di posizione digitale (N. di giri), 4 cifre



SH4

Ingranaggio elicoidale ad assi paralleli, Acciaio 20NCD2



BTC

Tappo per tubo quadrato, Standard



ESCON

Accessori per variatore di velocità 5A, Kit 4 cavi motore DC



DOMI120

Accessori di collegamento, Piatto girovole



GCB880

Guida curva, Serie 880 e 881



SC2

Giunto rigido in 2 parti, Ganascia di serraggio



PAP

Maniglia e battuta per porta, Maniglia ergonomica



ACLEPP

Angolare, 4 fori



ES

Simple support base (bipod), Plastic



PRES4HR

Pressa manuale da banco, Pressione fino a 600kg

Prodotti correlati



PSPD18

Manopola a pressione, PVC nero



PSPT

Manopola a pressione, PVC



PSPD40

Manopola a pressione, PVC nero



PSPD22

Conical flexible shaft handle Ø22, Black PVC