

# Angle plate for aluminium profile

## PRFPA **MiniTec**

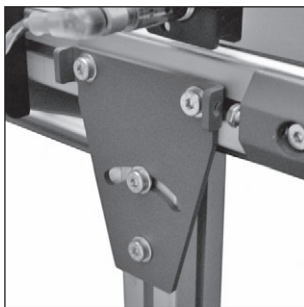
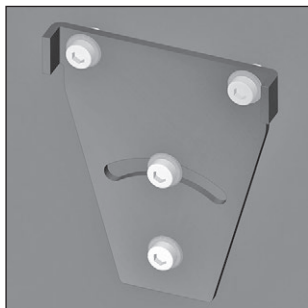
- Supplied with fixing kit
- Material:  
covered steel

### Uses

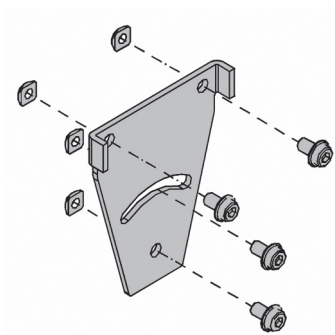
- Attaches support bases to the conveyor of a chassis
- Can also be used with slope conveyors
- Range +/- 35°

### Assembly

- Attach to the side of the conveyor chassis and to the bases using the fixing kit



Typical application



### DISCOUNTS

Qty.	1+	50+	100+
Disc.	List -5%	On request	

Part number	Type	Weight (kg)	Price each 1 to 49
PRF-PA	Angle plate	0,377	22,04 €

Dimensions in mm

## Altri prodotti...



NKXR

Cuscinetto combinato senza anello interno, Needle and cylindrical roller bearing...



J51

Riduttore coassiale a treni paralleli, da 0.13 a 0.49 - a treni para...



PPF

Pistoncino a molla, con flangia



CHM63

Riduttore a ruota e vite senza fine, fino a 196 Nm



RJUM05

Supporto per boccola Drylin R®, Chiuso - Corto



DEP

Attrezzi Hygienic Usit® and Hygienic Design®, Bussole per il monta...



CF

Perno folle, Standard - acciaio



FBL4004\_K32

Spazzola al metro, Polipropilene nero striato (PP)



PSPT

Manopola a pressione, PVC



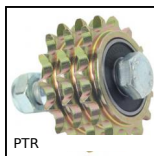
DOG111

Motoriduttore DC 12V e 24V DC, da 1.5 a 6 Nm



RBNpl

Ruota girevole con piastra, Acciaio - caucciù



PTR

Pignone tendicatena, Per applicazioni correnti

## Prodotti correlati



PRF4545

Profilato alluminio standard, 45 x 45 mm