

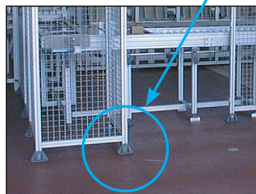
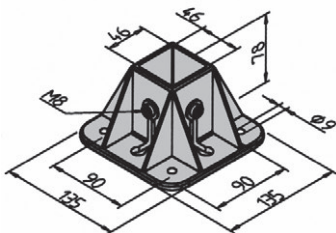
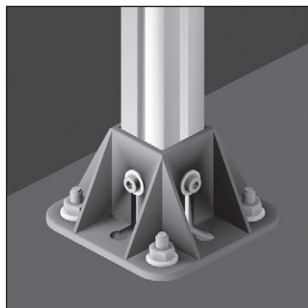
- Supplied with profile fixing kit
- Material: grey powder covered steel

### Uses

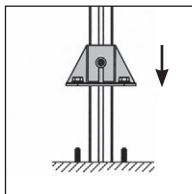
- For attaching panels or chassis to floors
- Suitable for all profiles up to 45x45mm

### Assembly

- Insert the profile into the foot
- Insert nuts with sprung tabs into the slots on the profile and lightly tighten the screws
- Make final adjustments to the position of the profile and then firmly tighten the screws
- Use anchoring system if fixing to a floor



Typical application



Mounting example

### DISCOUNTS

Qty.	1+	50+	100+
Disc.	List -5%	On request	

Part number	Type	Weight (kg)	Stock*	Price each 1 to 49
PRF-P-45	Anchor	0,595	✓	18,81 €

\*Depending on availability - Dimensions in mm

## Altri prodotti...



MDB\_MTB  
Ingranaggio conico in plastica stampata , 3:1



PTAF100-PAMF100  
Piede fissabile con base lamiera Ø100, Ø 100



BPM-Z  
Pressore a molla con intaglio e puntale a sfera, Corpo plastica + sf...



HTD8M\_20  
Puleggia dentata di trasmissione tipo HTD, HTD8 Acciaio



OP3\_14\_06  
Accessorio per indicatori, Boccola di riduzione



EV  
Terminale rapido inox per cavi,



SH0  
Ingranaggio elicoidale ad assi paralleli, Plastica lavorata (delrin)



SLB  
Pistoncino a molla, acciaio classe 5.8



SME  
Testa a snodo maschio, Inox / PTFE



NCT  
Giunto di collegamento, Ad



MEP  
Impugnatura cilindrica libera, Fissa



RAS  
Snodo angolare a 90° DIN71802, Inox

## Prodotti correlati



PRF4545  
Profilato alluminio standard, 45 x 45 mm