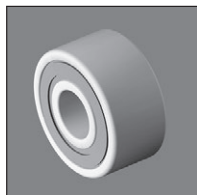
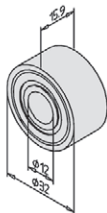
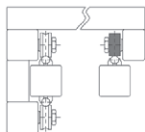


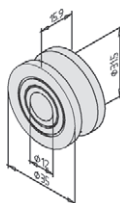
Roller wheel for aluminium profile

Roller for linear guiding shaft **MiniTec** PRFGAL

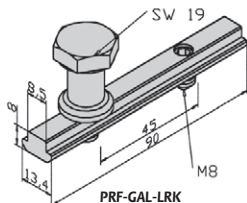
- **Guiding wheel**
- Double row bearing
- Roller PRF-GAL can compensate for small amounts of backlash for parallel working guidance systems
- PRF-GAL-12 is used with a Ø12mm guide shaft such as Z-12-3000A or Z-12-3000B
- Material: steel



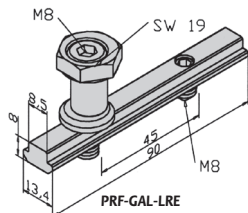
PRF-GAL



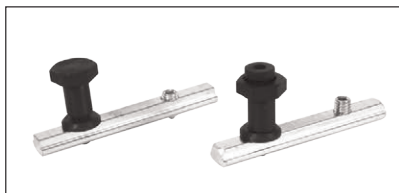
PRF-GAL-12



PRF-GAL-LRK



PRF-GAL-LRE



PRF-GAL-LRK

PRF-GAL-LRE

DISCOUNTS

Qty.	1+	50+	100+
Disc.	List -5%	On request	

Part number	Profile	Static (N)	Load Dynamic(N)	Weight (kg)	Stock*	Price each 1 to 49
Roller						
PRF-GAL	Flat	5100	8600	0,060	-	27,77 €
PRF-GAL-12	Concave Ø12	6000	10500	0,068	✓	20,63 €
Fixing kit for roller						
PRF-GAL-LRK	concentric	-	-	0,100	✓	12,91 €
PRF-GAL-LRE	Eccentric	-	-	0,100	✓	16,02 €

*Depending on availability - Dimensions in mm

Altri prodotti...



ZBconique

Ingranaggio conico in plastica, 1:1



VEL

Rotolo a strappo fermacavi, cavi elettrici e pneumatici



PTAF100-PAMF100

Piede fissabile con base lamiera Ø100, Ø 100



BHEX

Tappo di protezione esagonale, Tecnopolimero nero



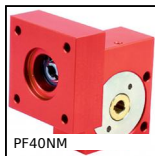
MSP3815

Inserto con piastrina a incollare Masterplate®, rettangolare con dado



F7-E

Visualizzatore multifunzione, Con sensore di posizione esterno



PF40NM

Riduttore a ruota e vite senza fine, fino a 18 Nm



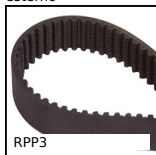
BOX-TOR-C

Valigetta di guarnizioni toriche in nitrile, 3,00 x 1,50mm a 30.20 x...



MSP3815

Inserto con piastrina a incollare



RPP3

Cinghia di trasmissione RPP,



PRF_P

Elementi di ancoraggio, Base di



CHALss

Cerniera piana inox, Inox

Prodotti correlati



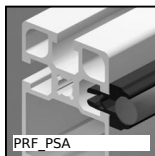
PRF_GAL

Rotella per profilo alluminio, Kit di fissaggio per rotella concentrica



PRF_GAL

Rotella per profilo alluminio, Kit di fissaggio per rotella eccentrica



PRF_PSA

Rotella per profilo alluminio, Supporto d'albero