

Fastener for aluminium profile

PRF **MiniTec**

Universal fastener

FIXUNI

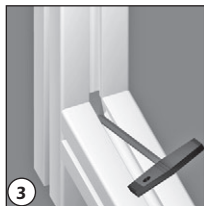
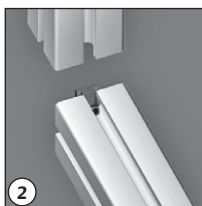
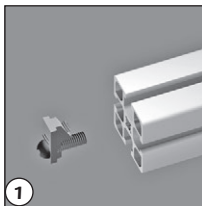
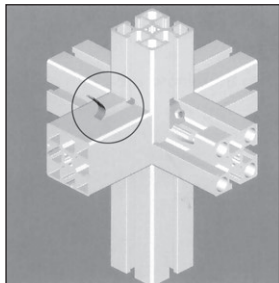
Uses

- Low cost fastening requiring little preparation
- Used for different assembly types

Central hole

- Directly accepts M8 screws

Quick-fixing



Assembly

1. Tap the central hole of the first profile (1) using a fluteless M8 tap.
Lightly attach the fastener to the end of the profile using the M8 screw (do not screw in completely)
2. Attach the second profile (2) in the required position.
3. Tighten the M8 grub screw with an SW4 hexagonal key or the PRF-TOOL-H4 tool.
Max. Suggested torque 12Nm

Advantages

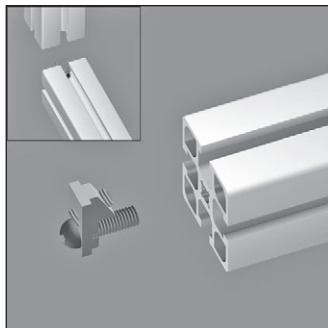
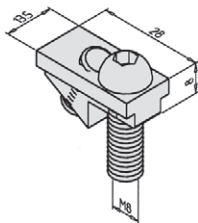
- Ends of profiles remain available
- Fastener is not visible
- Profiles can be repositioned/adjusted at any time
- Assembly will not twist
- Maximum load allowed: 6000N
- Cross joints in 3 dimensions can be created
- Joint can conduct electricity for bonding purposes.

Profile assembly

- Can be used to join all profile types
- Use multiple fasteners for longer lengths
- Materials:
- Fastener: electroplated chromed steel or stainless steel
- Round headed M8 screw, 25mm long.

Assembly

- Lightly attach the fastener into the slot on the profile (do not tighten)
- Slide the fastener in the slot to the required position
- Tighten the M8 grubscrew with an SW4 hexagonal key or the **PRF-TOOL-H4** tool

**No drilling****DISCOUNTS**

Qty.	1+	50+	100+
Disc.	List -5%	On request	

Part number	For profile	Tightening torque (Nm)	Weight (kg)	Stock*	Price each 1 to 49
PRF-FIX-UNI	All type of PRF profile	10,0	0,029	✓	5,18 €
PRF-FIX-UNI/SS	Stainless PRF/SS profile	01,2	-	✓	11,40 €

*Depending on availability - Dimensions in mm

Altri prodotti...



CLASS

Maniglia a ripresa -
femmina, Inox



BCM_T

Elemento di
trascinamento,
Elemento di
trascinamento



PSG05

Ingranaggio dritto di
precisione, Acciaio
35NCD6 pretrattato



ACLCHARJ

Cerniera ad avvitare,
Adjusts in 2 directions



YG1

Ingranaggio dritto
PRESTAZIONE, Acciaio
35NCD6



UCF

Cuscinetto a flangia
quadrata in ghisa,
Ghisa



B_ECO

Ingranaggio conico -
Acciaio C43 - ECO, 1:1



ATZY

Antivibrante elastico
sgolato, Acciaio



T25-6ECO

Puleggia dentata di
posizionamento tipo
T, Serie economica -



BAG0

Anello di bloccaggio,
Acciaio



SLS

Supporto per vite
trapezoidale,
Supporto Drylin®



BWU

Guida lineare di
precisione, da 1510 N
a 10500 N

Prodotti correlati



PRF1932

Profilato alluminio
standard, 19 x 32 mm



PRF4545

Profilato inox
standard, 45 x 45 mm



PRF_FIX_STD

Fissaggio, Fissaggio
standard



PRF_FIX_ANG

Fissaggio, Fissaggio
angolare