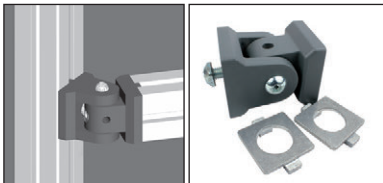


# Articulated bracket for use with aluminium profile

## PRFART *MiniTec* For loads up to 5000N

- **Cannot be used as a hinge**
- Fixing kit supplied
- Materials:
  - Body/handle: grey powder coated aluminium GD
  - Screw/locking piece: aluminium GD



PRF-ART

### Uses

#### Simple bracket

- Use for connecting profiles at any angle
- Use reinforcing structures or frames

#### Bracket with handle

- Allows components to be re-positioned quickly
  - Use for positioning control stations or widgets
- For heavy loads, use multiple profiles/brackets

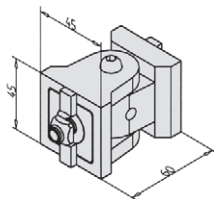
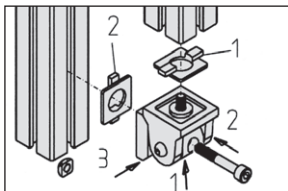


PRF-ART-P

### Assembly

- Place the two parts of the bracket in required positions
- Fix using the screws supplied
- Tighten using the handle (PRF-ART-P) or the lateral screw (PRF-ART)

The joint cannot be taken apart once assembled.



### DISCOUNTS

Qty.	1+	50+	100+
Disc.	List -5%	On request	

Part number	Max. load (N)	Weight (kg)	Stock*	Price each 1 to 49
<b>Simple bracket</b>				
PRF-ART	5000	0,25	✓	31,08 €
<b>Bracket with handle</b>				
PRF-ART-P	1500	0,28	✓	35,70 €

\*Depending on availability - Dimensions in mm

## Altri prodotti...



CHM40

Riduttore a ruota e vite senza fine, fino a 57 Nm



PSG15

Ingranaggio dritto di precisione, Acciaio 20NCD2 cementato temprato



RFVbr

Riduttore inox a ruota e vite senza fine, Braccio di reazione



SSB

Ingranaggio conico inox, 1:1



PRF4532

Profilato alluminio standard, 45 x 32 mm



PSG05S

Ingranaggio dritto di precisione, Inox 303



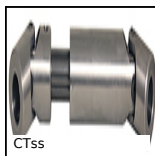
PM4

Coppia ruota e vite senza fine, Plastica lavorata (delrin)



ZHBRA

Ingranaggio conico in plastica, 1,25:1 2:1 3:1



CTss

Giunto cardanico telescopico inox,



PRF4590\_E

Squadra di giunzione, PRF4590



MHX

Manicotto esagonale maschiato, Esagonale



EBM

Cavallotto in acciaio, Acciaio

## Prodotti correlati



PRF4545

Profilato alluminio standard, 45 x 45 mm