

Fixable articulated foot Ø123

Stock Ste Sta

PR125

Maximum load 35,000N

- Levelling foot
- Non slip base
- Materials:
Base: Black glass reinforced polyamide (Shore 70)
Spindle: Zinc plated steel or stainless steel 304
(nut not supplied)

Advantages

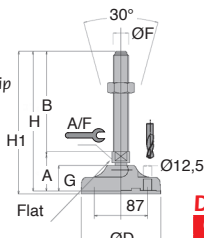
- Articulated rod allows auto-alignment with the ground
- Sole material ensures flexibility and grip

Accessories

- Extension for articulated foot
PR125-ENT (p.27)

Info.

- Values given for static loads will be reduced in case of a vibrating load



With non-slip base



DISCOUNTS

Qty	1+	20+	50+
Disc.	List -10%	On request	

Part number	ØD	Thread	B	A	A/F	G	H	H1	Static load (N)	Price each	
										Stock*	1 to 19
Steel spindle											
PR125-16-75	123	M16	75	57	20	37	132	133	35000	✓	21,89 €
PR125-16-150	123	M16	150	57	20	37	207	208	35000	✓	25,75 €
PR125-16-225	123	M16	225	57	20	37	282	285	35000	✓	30,10 €
PR125-20-125	123	M20	125	57	20	37	182	185	35000	✓	21,77 €
PR125-20-200	123	M20	200	57	20	37	257	260	35000	✓	25,42 €
PR125-20-250	123	M20	250	57	20	37	307	310	35000	✓	29,87 €
PR125-24-125	123	M24	125	57	20	37	182	185	35000	✓	21,77 €
PR125-24-200	123	M24	200	57	20	37	257	260	35000	✓	25,42 €
PR125-24-250	123	M24	250	57	20	37	307	310	35000	✓	29,87 €
PR125-30-125	123	M30	125	58	26	37	183	186	35000	✓	23,38 €
PR125-30-200	123	M30	200	58	26	37	258	261	35000	✓	27,97 €
PR125-30-250	123	M30	250	58	26	37	308	311	35000	-	31,13 €
Stainless steel spindle											
PR125-16-75/SS	123	M16	75	57	20	37	132	135	35000	-	37,74 €
PR125-16-150/SS	123	M16	150	57	20	37	207	210	35000	✓	48,48 €
PR125-16-225/SS	123	M16	225	57	20	37	282	285	35000	-	61,20 €
PR125-20-125/SS	123	M20	125	57	20	37	182	185	35000	✓	44,91 €
PR125-20-200/SS	123	M20	200	57	20	37	257	260	35000	✓	57,38 €
PR125-20-250/SS	123	M20	250	57	20	37	307	310	35000	-	65,97 €
PR125-24-125/SS	123	M24	125	57	20	37	182	185	35000	-	44,91 €
PR125-24-200/SS	123	M24	200	57	20	37	257	260	35000	-	51,18 €
PR125-24-250/SS	123	M24	250	57	20	37	307	310	35000	-	65,97 €
PR125-30-125/SS	123	M30	125	58	26	37	183	186	35000	-	50,96 €
PR125-30-200/SS	123	M30	200	58	26	37	258	261	35000	-	65,06 €
PR125-30-250/SS	123	M30	250	58	26	37	308	311	35000	-	74,14 €

*Depending on availability - Dimensions in mm

Extension for articulated foot Ø123

For articulated foot PR125

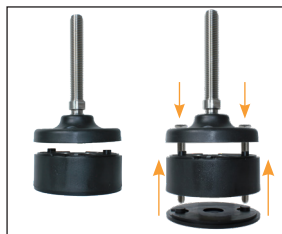
PR125

Extension with mounting holes for articulated feet PR125

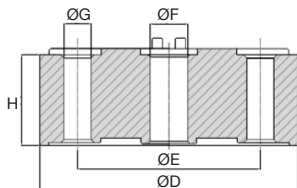
- Material
Polyamide
- Delivered without anti-slip rubber pad
- Suitable for any type of floor

Advantages

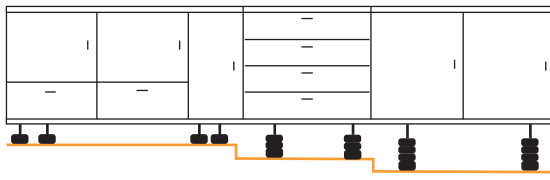
- Easily compensates for large differences in floor level



Assembly example
(screws not included)



Application example



DISCOUNTS

Qty	1+	20+	50+
Disc.	List -10%	On request	

Part number	ØD	ØE	H	ØG	ØF	Static load (N)	Stock*	Price each 1 à 19
PR125-ENT	123	87	43	13	18	35000	-	13,44 €

*Dans la limite du disponible - Dimensions en mm

Altri prodotti...



BDPR
Braccio di reazione,
Rigido



GPB
Maniglia a tirante,
Maschiatura
modellata



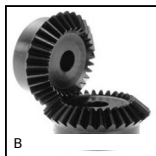
KSTM
Supporto ritto con
cuscinetto Igubal®,
Polimero



G-ECO
Ingranaggio dritto
acciaio - serie ECO,
Acciaio C45



TK_UUOP
Manicotto a sfere
autoallineante
Topball,
Autoallineante Topball



B
Ingranaggio conico -
Acciaio 60C40, 1:1



EHD06
Riduttore coassiale,
da 8 a 19 Nm



RTE
Rotex®, elastico,
ghisa



DB
Ingranaggio conico -
Acciaio 60C40, 2:1



HK
Accessorio di
serraggio manuale,
Serraggio manuale



T5P_T10P
Piastra di giunzione
per cinghia T, T10



S20
Supporto corto per
manicotto aperto a
sfere, Aperto - corto

Prodotti correlati



PR125
Piede fissabile con
snodo - poliammide, Ø
123



PR125
Piede fissabile con
snodo - poliammide, Ø
123