

Front fixing handle



PGMT

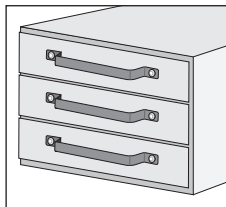
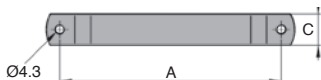
Steel or stainless steel

Economy range

- Push/pull handle
- Front fixing
- Materials:
Galvanised steel
Stainless steel, 304

Info.

- The handle is made from pre-galvanized steel.
- Cut edges and holes may therefore not be galvanised



Typical application

DISCOUNTS

Qty	1+	6+	20+	50+	100+	250+
Disc.	List	-5%	-10%	-15%	-20%	On request

Part number	Material	Finish	A	B	C	F	Weight (g)	Stock*	Price each 1 to 5
PGMT107-4/AG	Galvanised steel	Natural	107	21	15	120	32	✓	3.68 €
PGMT107-4/SS	Stainless steel 304	Deburred	107	21	15	120	32	✓	6.43 €

Dimensions in mm

Altri prodotti...



CLA
Maniglia a ripresa
Hygienic Usit®, Inox



EIM
Cavallotto Inox, Inox



ZBconique
Ingranaggio conico in
plastica, 1:1



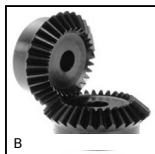
SBF
Sealed flange bearing
unit for Food Industry,
cover



WTM
Rondella per
serraggio - DIN6340,
Acciaio



AT5-25ECO
Puleggia dentata di
posizionamento tipo
AT, Serie economica -
AT5 al...



B
Ingranaggio conico -
Acciaio 60C40, 1:1



CM_CO
Attrezzi Hygienic
Usit® and Hygienic
Design®, Protective
inserts f...



WJRM
Pattino ibrido Drylin®
W, Cuscinetto ibrido



BPHT
Sfera portante
fissaggio con perno
filettato, Forte



CHM50
Riduttore a ruota e
vite senza fine, fino a
107 Nm



PRF_GAL
Rotella per profilo
alluminio, Kit di
fissaggio per rotella
concentr...

Prodotti correlati



PGMT
Maniglia a ponte,
Acciaio



PGM86-M5
Maniglia a ponte,
Termoplastica



PGM52-M4
Maniglia a ponte,
Alluminio



PGM52-M4
Maniglia a ponte,
Ottone