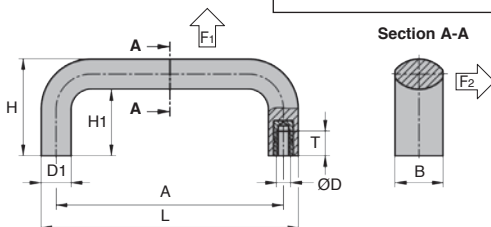
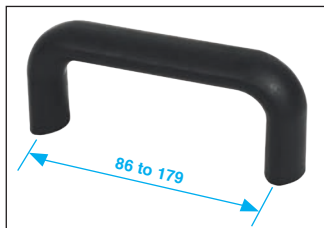


Carrying handle

Thermoplastic

PGM

- Gripping handle for both pushing and pulling
- Rear mounting
- Material:
Black glass-fibre reinforced thermoplastic,
brass threaded insert



DISCOUNTS

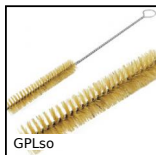
Qty	1+	6+	20+	50+	100+	250+
Disc.	List	-5%	-10%	-15%	-20%	On request

Part number	A	B	ØD	D1	H	H1	L	T	F1 (N)	F2 (N)	Stock*	Price each 1 to 5
PGM86-M5	86	20	M5	12,5	40	28	98,5	10	4000	1500	✓	6,81 €
PGM86-M6	86	20	M6	12,5	40	28	98,5	9	4000	1500	✓	7,16 €
PGM94-M5	94	20	M5	12,5	40	28	106,5	10	3300	1600	✓	7,13 €
PGM94-M6	94	20	M6	12,5	40	28	106,5	9	3300	1600	✓	7,34 €
PGM117-M5	117	25	M5	16,0	50	34	134,0	10	4400	1800	✓	7,58 €
PGM117-M6	117	25	M6	16,0	50	34	134,0	9	4400	1800	-	8,02 €
PGM117-M8	117	25	M8	16,0	50	34	134,0	14	4400	1800	✓	8,24 €
PGM120-M5	120	25	M5	16,0	50	34	134,0	10	5200	2400	-	7,80 €
PGM120-M6	120	25	M6	16,0	50	34	134,0	9	5200	2400	✓	8,24 €
PGM120-M8	120	25	M8	16,0	50	34	134,0	14	5200	2400	-	8,47 €
PGM132-M5	132	25	M5	16,0	50	34	148,0	10	3700	2600	-	8,02 €
PGM132-M6	132	25	M6	16,0	50	34	148,0	9	3700	2600	-	8,69 €
PGM132-M8	132	25	M8	16,0	50	34	148,0	14	3700	2600	-	8,92 €
PGM150-M6	150	29	M6	18,0	58	40	168,0	15	5900	1900	-	9,49 €
PGM150-M8	150	29	M8	18,0	58	40	168,0	14	5900	1900	-	9,59 €
PGM150-M10	150	29	M10	18,0	58	40	168,0	14	5900	1900	-	10,26 €
PGM179-M8	179	29	M8	18,0	58	40	197,0	14	3800	3200	✓	11,05 €
PGM179-M10	179	29	M10	18,0	58	40	197,0	14	3800	3200	-	11,37 €

Dimensions in mm

0 825 88 6000
Service 0,15 € / min
+ prix appel

Altri prodotti...



GPLso

Scovolo, seta



SVR15

Martinetto a vite - Vite rotante, Con madrevite esterna



SSB

Ingranaggio conico inox, 1:1



SRG

Chiusura a leva regolabile, Corsa da 78mm a 90mm



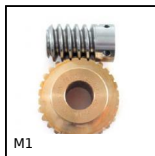
BLHM20

Rinvio angolare, fino a 1.77 Nm



TBD

Tavola di posizionamento a passo inverso manuale, 20kg



M1

Coppia ruota e vite senza fine, Bronzo



TCC_SS

Tenditore, Inox



WING

Dado ad alette per serraggio manuale, Acciaio (ANSI B18-17)



UGPL

Unità di guida per cilindrico, Cuscinetto lungo



EBH

Dado cieco Hygienic Design®, Con collare



SVG

Chiusura a leva regolabile, Corsa da 174mm a 190mm

Prodotti correlati



PGMSS

Maniglia a ponte inox, Inox



PO

Maniglia a ponte - Multi-settore, Foro liscio



PGMT

Maniglia a ponte a fissaggio anteriore, Inox



PGM52-M4

Maniglia a ponte, Alluminio