

Carrying handle

PGM

Aluminium or brass

- Gripping handle for both pushing and pulling

- Rear mounting

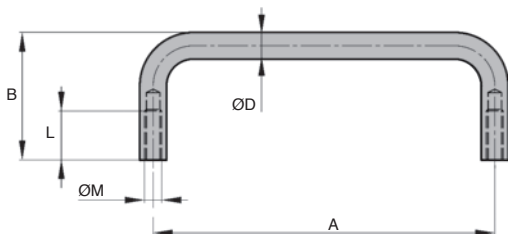
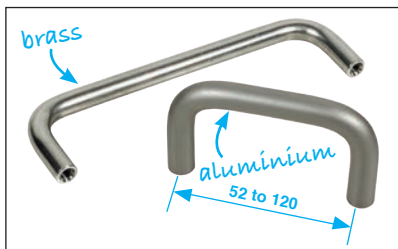
- Materials:

Aluminium, natural finish

Aluminium, polished

Chromed brass

Nickel plated brass



DISCOUNTS

Qty	1+	6+	20+	50+	100+	250+
Disc.	List	-5%	-10%	-15%	-20%	On request

Part number	Material	Finish	A	B	ØD	L	ØM	Weight (g)	Stock*	Price each 1 to 5
PGM52-M4/ALA	aluminium anodized, natural	natural	52	34	8	10	M4	14	✓	7,19 €
PGM80-M4/ALA	aluminium anodized, natural	natural	80	34	8	12	M4	17	-	8,02 €
PGM100-M4/ALP	aluminium	polished	100	30	7	8	M4	14	✓	4,33 €
PGM100-M4/ALA	aluminium anodized, natural	natural	100	34	8	12	M4	20	✓	8,47 €
PGM100-M4/BRC	brass	chromed	100	30	7	8	M4	44	✓	6,65 €
PGM100-M4/BRN	brass	nickel plated	100	30	7	8	M4	44	-	6,56 €
PGM120-M4/ALA	aluminium anodized, natural	natural	120	34	8	10	M4	23	✓	9,01 €

Dimensions in mm

Altri prodotti...



LC
Limitatore di coppia
ad attrito, 30 a 240
Nm



SLVHlok
Bloccaggio a leva, A
leva verticale / base
orizzontale



CHAB
Hinge with stop,
Hinge



YG1
Ingranaggio dritto
PRESTAZIONE, Acciaio
35NCD6



NPTMdi
Grano punta in delrin,
punta in delrin



BOX-TOR-MAX
Valigetta di
guarnizioni toriche in
nitrile, 2.90 x 1.78mm
a 82.14 x...



AFM
Cuscinetto a collare ,
Polimero alimentare



HFL
Ruota libera,
Combinata ad aghi



NPTF20
Morsetto di
collegamento, Fisso
Ø10 a Ø14



BTESS
Tenditore automatico
universale per
tenditore, Per
ambienti aggressivi



J64
Riduttore coassiale a
treni paralleli, da 0.57
a 2.25 Nm - a treni
p...



GP75
Chiusura a leva molla
a trazione
compensata,
Standard (GP75)

Prodotti correlati



PGM52-M4
Maniglia a ponte,
Alluminio



PGM52-M4
Maniglia a ponte,
Ottone



PGM86-M5
Maniglia a ponte,
Termoplastica



PGM55
Maniglia a ponte inox,
Inox