

Carrying handle

PGM

Aluminium or brass

- Gripping handle for both pushing and pulling

- Rear mounting

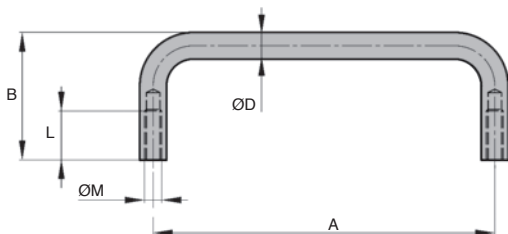
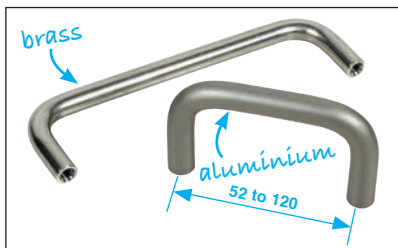
- Materials:

Aluminium, natural finish

Aluminium, polished

Chromed brass

Nickel plated brass



DISCOUNTS

Qty	1+	6+	20+	50+	100+	250+
Disc.	List	-5%	-10%	-15%	-20%	On request

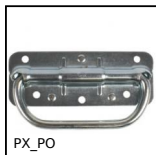
Part number	Material	Finish	A	B	ØD	L	ØM	Weight (g)	Stock*	Price each 1 to 5
PGM52-M4/ALA	aluminium anodized, natural	natural	52	34	8	10	M4	14	✓	7,19 €
PGM80-M4/ALA	aluminium anodized, natural	natural	80	34	8	12	M4	17	-	8,02 €
PGM100-M4/ALP	aluminium	polished	100	30	7	8	M4	14	✓	4,33 €
PGM100-M4/ALA	aluminium anodized, natural	natural	100	34	8	12	M4	20	✓	8,47 €
PGM100-M4/BRC	brass	chromed	100	30	7	8	M4	44	✓	6,65 €
PGM100-M4/BRN	brass	nickel plated	100	30	7	8	M4	44	-	6,56 €
PGM120-M4/ALA	aluminium anodized, natural	natural	120	34	8	10	M4	23	✓	9,01 €

Dimensions in mm

Altri prodotti...



LR
Cuscinetti a sfere -
Accessorio, Ghiera di
regolazione



PX_PO
Maniglia -
movimentazione
manuale, con piastra
posteriore



UCFL
Cuscinetto a flangia
ovale in ghisa, Ghisa



AC156-157
Riscontro per chiusura
a leva rigida ad
anello, 25.5mm



B_ECO
Ingranaggio conico -
Acciaio C43 - ECO, 1:1



PTKFss
Piede speciale
agroaluminare, Dado
cieco inox - norme 3A



LRR22
Small dimension latch
with locking system,
Aluminium



PLM-SC
Magnete piatto con
foro svasato, Con foro
fresato



CHMX_CHMDX
Albero per riduttore a
ruota e vite senza fine
CHMR e CHM, Albero



HBM
Guida su semi-binari,
Boccola di regolazione



CMT
Motore AC asincrono
trifase, 0.12 a 0.22kW



SVT15
Martinetto a vite - Vite
traslante, Vite
traslante

Prodotti correlati



PGM52-M4
Maniglia a ponte,
Ottone



PGM55
Maniglia a ponte inox,
Inox



PO
Maniglia a ponte -
Multi-settore, Foro
cieco maschiato



PGMT
Maniglia a ponte a
fissaggio anteriore,
Inox