

Pull handle

PCA

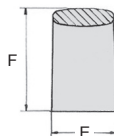
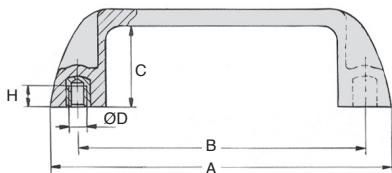
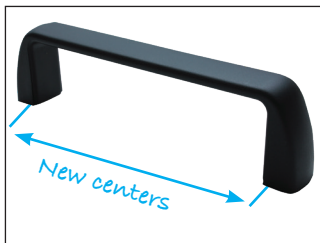
Thermoplastic

Gripping handle for both pushing and pulling

- Rear mounting
- Working T° -30°C to +130°C
- Materials:
 - Thermoplastic PA6 glass fiber reinforced
 - Brass inserts with tapped blind hole

Advantages

- Very strong
- 110mm and 120mm centres correspond to German standards
- No product retention



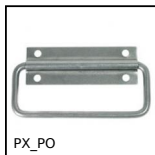
DISCOUNTS

Qty	1+	6+	20+	50+	100+	250+
Disc.	List	-5%	-10%	-15%	-20%	On request

Part number	B	A	E	F	C	H	ØD	Weight (g)	Stock*	Price each 1 à 5
PCA93-M5	93,5±0,5	111	23	36	29	9	M5	41	-	5,31 €
PCA93-M6	93,5±0,5	111	23	36	29	9	M6	42	-	5,31 €
PCA105-M5	105±0,5	121	26	37	29	9	M5	46	-	5,67 €
PCA105-M6	105±0,5	121	26	37	29	9	M6	48	-	5,67 €
PCA110-M5	110±0,5	133	26	40	32	9	M5	58	-	6,18 €
PCA110-M6	110±0,5	133	26	40	32	9	M6	60	-	6,18 €
PCA117-M5	117±1	133	26	40	32	9	M5	57	-	6,39 €
PCA117-M6	117±1	133	26	40	32	9	M6	59	-	6,39 €
PCA117-M8	117±1	133	26	40	32	9	M8	61	-	6,39 €
PCA120-M8	120±1	137	26	40	32,5	9	M8	58	-	6,48 €
PCA132-M8	132±1	150	26	45	37	9	M8	68	-	7,38 €
PCA150-M8	150±1	169	27	45	37	9	M8	76	-	8,25 €
PCA179-M8	179±1	200	28	51	42	9	M8	101	-	9,42 €
PCA179-M10	179±1	200	28	51	42	13	M10	101	-	9,45 €

*Depending on availability - Dimensions in mm

Altri prodotti...



Maniglia -
movimentazione
manuale, standard



Chiavistello con
bloccaggio, Lucchetto
a molla inox



Guide telescopiche
per montaggio in
scanalatura,
Estensione parziale



Guida curva, Serie
880 e 881



Ruota fissa con
piastra, Acciaio -
caucciù



Riduttore a rinvio
angolare, da 4.50 a
62 Nm



Distanziatore
cilindrico,
termoplastica



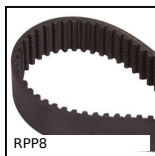
Accessori per
variatore di velocità
5A, Cavo USB per
connessione PC



Conical flexible shaft
handlee Ø22, Black
PVC



Motore AC asincrono
trifase, 0.12 a 0.22kW



Cinghia di
trasmissione RPP,
RPP8



Pressore liscio a
molla, Corpo
termoplastica

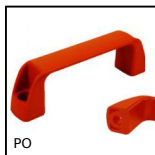
Prodotti correlati



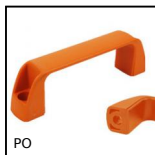
Maniglia a ponte -
Multi-settore, Foro
liscio



Maniglia a ponte -
Multi-settore, Foro
cieco maschiato



Maniglia a ponte -
Multi-settore, Foro
liscio



Maniglia a ponte -
Multi-settore, Foro
liscio