

Spur gear coaxial gearbox



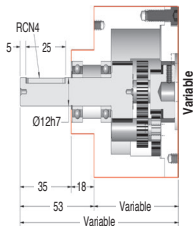
NT62 NH62

Torque up to 18Nm

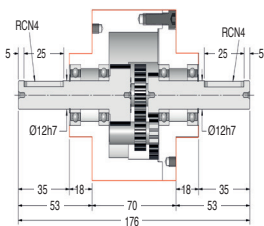
- Ratios from 1:1 to 27:1 (other ratios available on request)
- Output backlash: N/A
- Max. input speed: 3000 rpm
- Materials:
 - casing: anodised aluminium
 - input & output: unhardened steel
- Weight: 0.61 kg

Options

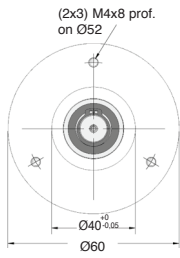
- Can be adapted to suit your motor
- Ask for the ratio you require
- Also see **NT61**, **NH61** and **NT63**, **NH63**
- keyway conforms to DIN 6885



NH62



NT62



Output face

OUTPUT TORQUE (In Nm, values given as a guide only)

Ratios	10:1	12:1	15:1	18:1	20:1	24:1	27:1
3000	6,0	8,0	8,0	8,0	8,0	8,0	8,0
2000	7,0	8,5	8,5	8,5	8,5	8,5	8,5
1000	8,5	9,0	9,0	9,0	9,0	9,0	9,0
INPUT SPEED (rpm)	500	10,0	10,0	10,0	10,0	10,0	10,0
	200	11,0	12,0	12,0	12,0	12,0	12,0
	100	12,0	14,0	14,0	14,0	14,0	14,0
	50	14,0	16,0	16,0	16,0	16,0	16,0
	20	16,0	18,0	18,0	18,0	18,0	18,0

Large choice of reduction ratios!
Up to 120:1

DISCOUNTS

Qty.	1+	2+	4+	6+
Disc.	List	-15%	-20%	On request

Part number	Ratios	Max. input speed (rpm)	Max. output speed (rpm)	Efficiency at 1000 rpm	Module	Direction of input/output rotation	Price each
NT62-10	NH62-10	10:1	3000	300	85%	Same	769,20 €
NT62-12	NH62-12	12:1	3000	250	85%	Same	769,20 €
NT62-15	NH62-15	15/1	3000	200	85%	Same	769,20 €
NT62-18	NH62-18	18:1	3000	166	85%	Same	769,20 €
NT62-20	NH62-20	20:1	3000	150	85%	Same	769,20 €
NT62-24	NH62-24	24:1	3000	125	85%	Same	769,20 €
NT62-27	NH62-27	27:1	3000	111	85%	Same	769,20 €
NT62-SP	NH62-SP	1:1 - 27:1	Special ratios from 1:1 to 27:1				877,07 €

On request

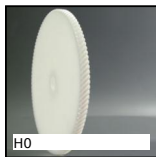
Dimensions in mm

Altri prodotti...



CLB_M

Maniglia a ripresa,
Zamak



H0

Ingranaggio elicoidale
ad assi incrociati a
90°, Plastica lavorata



MFB

Giunto a soffietto,
Alluminio e bronzo -
con vite a pressione



AFSE

Perno di fissaggio, con
chiusura a scatto



AF

Giunto rigido con cava
chiave, Set screw



COA-COG

Staffa di montaggio
per molla a gas,
Staffa di montaggio
piana per s...



RHTtcss

Ruota alte
temperature, fino a
200kg



PSG08HC

Ingran. dritto di
precisione trattato
skiving, Acciaio
20NCD2 cement...



MSP23

Inserto con piastrina a
incollare
Masterplate®,



BPHfclip

Sfera portante, Anello
di fissaggio -
montaggio dall'alto



GSI_A

Molla a gas regolabile
inox, Inox



CHINV

Cerniera invisibile,
Invisibile - Apertura
90°

Prodotti correlati



NT61

Riduttore coassiale a
treni paralleli, da 5 a
14 Nm - a treni parall...



NT63

Riduttore coassiale a
treni paralleli, da 8 to
20 Nm - a treni paral...