

# Cylindrical Master-Plate® glueable insert Ø23

Inox 316L

MSP23

- Glueable stainless steel plate with tapped insert or threaded stud
- Material:  
316L stainless steel

## Applications

- Industrial, transport, building, furnishings

## Info.

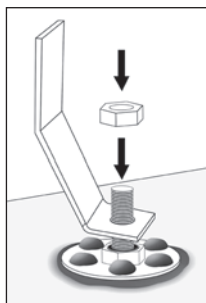
- Glue not supplied
- Not supplied individually, contact us for details



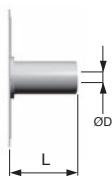
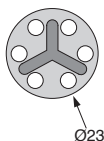
316L stainless steel



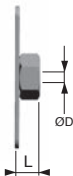
316L stainless steel



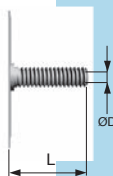
Typical application



Tapped



Nut



Thread

## DISCOUNTS

Qty	1+	50+	100+	500+
Disc.	List	-10%	-20%	On request

Part number	A	ØD	L	Form	Price each 1 to 49
MSP23T-4-10/SS	23	M4	10	Tapped	6,13 €
MSP23T-5-10/SS	23	M5	10	Tapped	6,33 €
MSP23T-6-10/SS	23	M6	10	Tapped	6,55 €
MSP23E-4-3/SS	23	M4	3,2	Nut	1,93 €
MSP23E-5-4/SS	23	M5	4	Nut	1,97 €
MSP23E-6-5/SS	23	M6	5	Nut	2,24 €
MSP23F-4-16/SS	23	M4	16	Thread	2,05 €
MSP23F-4-20/SS	23	M4	20	Thread	2,07 €
MSP23F-5-12/SS	23	M5	12	Thread	2,07 €
MSP23F-6-25/SS	23	M6	25	Thread	2,26 €

Fax

0 825 88 6000

Service 0,15 € / min  
+ prix appel

cial2@hpceurope.com

HPC

SUPPLEMENT 2019

83

## Altri prodotti...



WW10  
Guida Drylin® W,  
Carrello



CHAE3030PA  
Cerniera ad avvitare  
estetica quadrata,  
Poliammide



AKN  
Giunto a soffietto  
Gerwah®, da 22 a  
180Nm



LSAG  
Albero scanalato a  
sfere, Carello - da 514  
N a 15386 N



PSG125  
Ingranaggio dritto di  
precisione, Acciaio  
20NCD2 cementato  
temprato



Gdal  
Giunto cardanico  
doppio serie eco,  
Sollecitazioni leggere



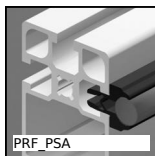
SH1  
Ingranaggio elicoidale  
ad assi paralleli,  
Acciaio 20NCD2



EKGS  
Giunto senza gioco  
Gerwah®, da 0.5 a  
35Nm



DB  
Ingranaggio conico in  
acciaio, 2:1



PRF\_PSA  
Rotella per profilo  
alluminio, Supporto  
d'albero



DOG258  
Motoriduttore DC 12V  
e 24V DC, da 12 a 15  
Nm



ECF  
Rivetto rivestito in  
gomma di fissaggio,  
Elastomero in  
cloroprene

## Prodotti correlati



MSP3815  
Inserto con piastrina a  
incollare  
Masterplate®,  
rettangolare con in...



MSP38  
Inserto con piastrina a  
incollare  
Masterplate®,  
Cilindrico Ø38 con...



MSP23  
Inserto con piastrina a  
incollare  
Masterplate®,  
Cilindrico Ø23 con...



MSP3815  
Inserto con piastrina a  
incollare  
Masterplate®,  
rettangolare con dado