

Cylindrical Master-Plate® glueable insert

MSP19
MSP20

316L stainless steel

- Glueable stainless steel plate with tapped insert or threaded stud
- Material:
316L stainless steel

Applications

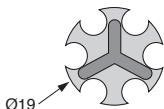
- Industrial, transport, building, furnishings

Info.

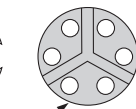
- Glue not supplied
- Not supplied individually, contact us for details



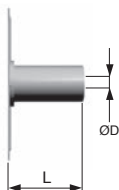
316L stainless steel



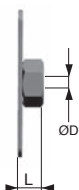
MSP19



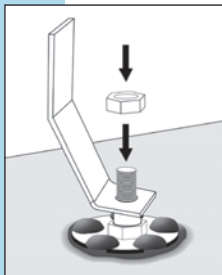
MSP20



Tapped



Nut



Typical application



DISCOUNTS

Qty	1+	50+	100+	500+
Disc.	List	-10%	-20%	On request

Part number	ØA	ØD	L	Form	Prix Uni. 1 à 49
MSP19TB-5-20/SS	19	M5	20	Blind tapped	7,81 €
MSP19E-4-3/SS	19	M4	3,2	Nut	1,90 €
MSP19E-5-4/SS	19	M5	4	Nut	1,93 €
MSP20E-5-4/SS	20	M5	4	Nut	1,95 €

Altri prodotti...



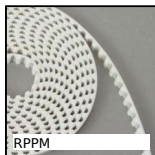
PDD

Pressore a molla
sensore di
rilevamento, Con asta
di comando per int...



PSG15

Ingranaggio dritto di
precisione, Inox 316



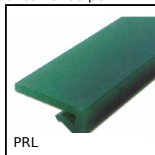
RPPM

Cinghia aperta al
metro tipo RPP, RPP14
Poliuretano armatura
in acci...



NT92

Riduttore coassiale a
treni paralleli, da 15 a
40 Nm - a treni
paral...



PRL

Profilo supporto per
catena, Profilo ad L ad
incastro



NCT

Giunto di
collegamento, Ad
angolo fisso



HTD8M_50

Puleggia dentata di
trasmissione tipo
HTD, HTD8 Acciaio



LRR

Chiavistello con perno
prismatico, Lucchetto
a molla



PRS100

Piede snodabile tutto
inox Ø100, Ø 100



FF30

Riduttore ad alberi
paralleli, da 21.50 a
83 Nm



BAGSS

Anello di bloccaggio
inox, Inox



LFM2

Vite trapezoidale
acciaio, Acciaio
semiduro - 2 filetti

Prodotti correlati



MSP3815

Inserto con piastrina a
incollare
Masterplate®,
rettangolare con in...



MSP38

Inserto con piastrina a
incollare
Masterplate®,
Cilindrico Ø38 con...



MSP23

Inserto con piastrina a
incollare
Masterplate®,
Cilindrico Ø23 con...



MSP3815

Inserto con piastrina a
incollare
Masterplate®,
rettangolare con dado