

- **Springloaded bolt can be held in unlocked position**

- It is recommended to combine 1 latch with 1 strike

- Materials:

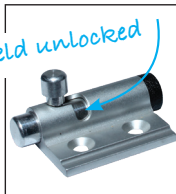
Body: aluminium 6060T5 clear anodised

Shaft and handle: raw aluminium

Cap: Black PE

Spring: Stainless steel

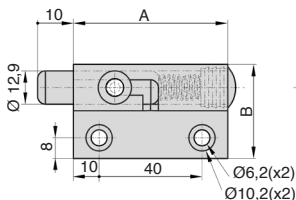
Strike: aluminium 5754 clear anodised



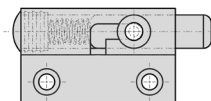
Springloaded bolt



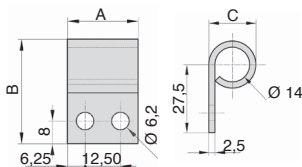
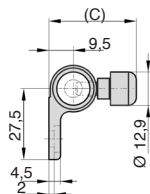
Strike



LRR-37-2/ALU



LRR-37-1/ALU



LRR-37-GPV/ALU

DISCOUNT

Qty	1+	10+	20+	50+
Disc. List	-3%	-5%	On request	

Part number	A	B	C	Type	Weight (g)	Stock*	Price each 1 à 9
Springloaded bolt							
LRR-37-2/ALU	60	36,5	34	2	58		
LRR-37-1/ALU	60	36,5	34	1	58		
Strike							
LRR-37-GPV/ALU	25	37	19	-	11		

*Depending on availability - Dimensions in mm

Altri prodotti...



WINGbrEcrou

Dado ad alette per serraggio manuale DIN315, Ottone DIN 315



NKX

Cuscinetto combinato senza anello interno, Needle and roller bearings



SNG

Cuscinetto ritto polimero inox, Ghisa - In 2 metà



J64

Riduttore coassiale a treni paralleli, da 0.57 a 2.25 Nm - a treni p...



T10-BAR

Barra dentata, T10



BAGSS

Anello di bloccaggio inox, Inox



PRF_GAL

Rotella per profilo alluminio, Kit di fissaggio per rotella eccentrica



SSG_304L

Ingranaggio dritto Inox, Inox 304L



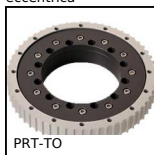
HSS

Vite a spalla di precisione ISO7379, Acciaio trattato classe



GPBSS

Impugnatura sferica femmina filettata, Inox 304



PRT-TO

Corona girevole Iglidur®, Con dentatura esterna-



CHAE4060PA

Cerniera ad avvitare estetica asimmetrica, Poliammide

Prodotti correlati