

Spring loaded latch

Bra

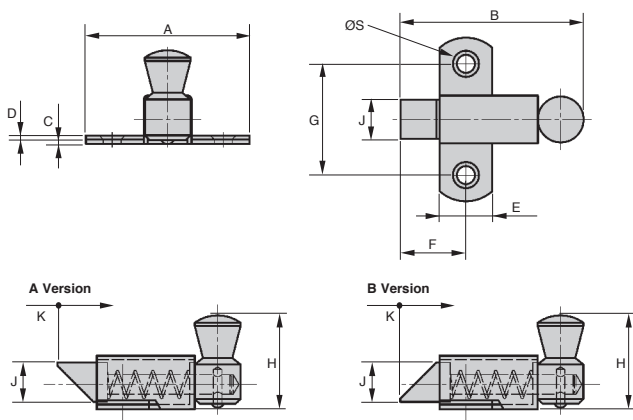
LRR

Plated steel or chromed brass

- **Night latch**
- Inward/outward opening versions available (A+ B versions)
- Materials : Plated steel or chromed brass

Info.

- Part N° LRR-50-A/LC replaces the old reference LRR-50



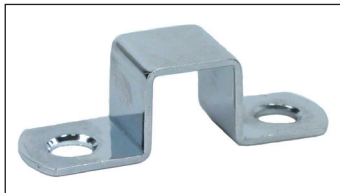
DISCOUNTS

Qty.	1+	51+	101+
Disc.	List -10%	On request	

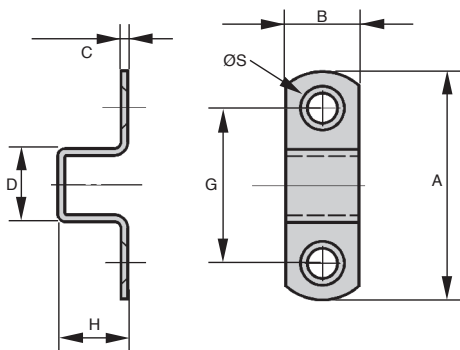
Part number	A	B	C	D	E	F	G	H	J	K	ØS	Material	Weight (g)	Stock*	Price each 1 to 50	
Version A																
LRR-50-A/ZN	50	56	1,5	1,2	16	20	34	27	12	12	4	Steel	71	✓	18,57 €	
LRR-50-A/LC	50	56	1,5	1,2	16	20	34	27	12	12	4	Brass	75	✓	25,05 €	
Version B																
LRR-50-B/ZN	50	56	1,5	1,2	16	20	34	27	12	12	4	Steel	71	✓	18,57 €	
LRR-50-B/LC	50	56	1,5	1,2	16	20	34	27	12	12	4	Brass	75	-	39,69 €	

*Depending on availability

- Catch for sprung latch LRR
- Materials : Plated steel or chromed brass



INCREASED
STOCK



DISCOUNTS

Qty.	1+	51+	101+
Disc.	List	-10%	On request

Part number	A	B	C	D	G	H	ØS	Material	Weight (g)	Stock*	Price each 1 to 50
LRR-50-GPV/ZN	50	16	1,5	16	34	16	4	Steel	12	✓	2,75 €
LRR-50-GPV/LC	50	16	1,5	16	34	16	4	Brass	13	✓	6,54 €

*Depending on availability

Altri prodotti...



SRG

Chiusura a leva regolabile, Corsa da 117,4mm a 128mm



CHAEss

Cerniera estetica, Inox



SH0

Ingranaggio elicoidale ad assi paralleli, Plastica lavorata (delrin)



HBM

Guida su semi-binari, Boccola di regolazione



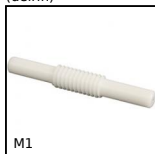
CHM50

Riduttore a ruota e vite senza fine, fino a 107 Nm



EHD12

Riduttore coassiale, da 60 a 140 Nm



M1

Vite senza fine, Plastica lavorata (delrin)



PSG125S

Ingranaggio dritto di precisione, Inox 316



PCLA_T

Maniglia a ripresa - maschio, Plastica



ACLEPP

Angolare, 4 fori



PSG25

Ingranaggio dritto di precisione, Inox 303



PSG05HC

Ingran. dritto di precisione trattato skiving, Acciaio 20NCD2 cement...

Prodotti correlati



LRR

Chiavistello con perno prismatico, Gancio



LRRss

Interblocco di sicurezza, Chiusura a molla - inox



LRR22

Small dimension latch with locking system, Aluminium



LRRRA

Latch with locking system, Aluminium