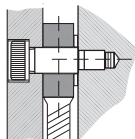
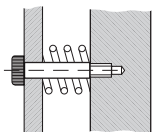
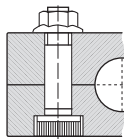
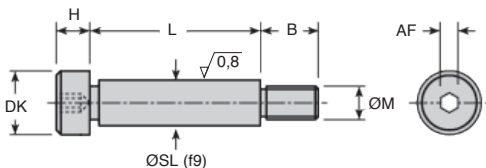


HSSs

A2 stainless steel

- **Centering and clamping function**
- Ground shoulder, tolerance f9
- **Material:**
Stainless steel A2



Part number	Thread		L	ØSL (f9)	B	DK	H	AF	Stock*	Price each 1 to 5
	ØM	Pas								
HSS5-10/SS/B	M5	0,80	10	6	9,50	10,22	4,5	3	✓	46,85 €
HSS5-12/SS/B	M5	0,80	12	6	9,50	10,22	4,5	3	✓	46,97 €
HSS5-16/SS/B	M5	0,80	16	6	9,50	10,22	4,5	3	-	48,70 €
HSS5-20/SS/B	M5	0,80	20	6	9,50	10,22	4,5	3	✓	54,82 €
HSS5-25/SS/B	M5	0,80	25	6	9,50	10,22	4,5	3	✓	63,45 €
HSS5-30/SS/B	M5	0,80	30	6	9,50	10,22	4,5	3	✓	65,85 €
HSS5-40/SS/B	M5	0,80	40	6	9,50	10,22	4,5	3	✓	72,20 €

Dimensions in mm

Part number	Thread		L	ØSL					Stock*	Price each 1 to 5
	ØM	Pas		(f9)	B	DK	H	AF		
HSS6-12/SS/B	M6	1,00	12	8	11,00	13,27	5,5	4	✓	56,30 €
HSS6-16/SS/B	M6	1,00	16	8	11,00	13,27	5,5	4	-	55,25 €
HSS6-20/SS/B	M6	1,00	20	8	11,00	13,27	5,5	4	-	63,84 €
HSS6-25/SS/B	M6	1,00	25	8	11,00	13,27	5,5	4	-	69,98 €
HSS6-30/SS/B	M6	1,00	30	8	11,00	13,27	5,5	4	-	70,83 €
HSS6-40/SS/B	M6	1,00	40	8	11,00	13,27	5,5	4	-	75,28 €
HSS6-50/SS/B	M6	1,00	50	8	11,00	13,27	5,5	4	✓	85,10 €
HSS8-16/SS/B	M8	1,25	16	10	13,00	16,27	7	5	✓	59,27 €
HSS8-20/SS/B	M8	1,25	20	10	13,00	16,27	7	5	-	62,46 €
HSS8-25/SS/B	M8	1,25	25	10	13,00	16,27	7	5	✓	68,54 €
HSS8-30/SS/B	M8	1,25	30	10	13,00	16,27	7	5	-	85,05 €
HSS8-40/SS/B	M8	1,25	40	10	13,00	16,27	7	5	✓	78,61 €
HSS8-50/SS/B	M8	1,25	50	10	13,00	16,27	7	5	-	88,04 €
HSS8-60/SS/B	M8	1,25	60	10	13,00	16,27	7	5	-	97,03 €
HSS8-70/SS/B	M8	1,25	70	10	13,00	16,27	7	5	-	118,18 €
HSS8-80/SS/B	M8	1,25	80	10	13,00	16,27	7	5	-	112,20 €
HSS10-16/SS/B	M10	1,50	16	12	16,00	18,27	9	6	✓	46,46 €
HSS10-20/SS/B	M10	1,50	20	12	16,00	18,27	9	6	✓	51,78 €
HSS10-25/SS/B	M10	1,50	25	12	16,00	18,27	9	6	-	49,73 €
HSS10-30/SS/B	M10	1,50	30	12	16,00	18,27	9	6	-	54,79 €
HSS10-40/SS/B	M10	1,50	40	12	16,00	18,27	9	6	-	57,05 €
HSS10-50/SS/B	M10	1,50	50	12	16,00	18,27	9	6	-	59,77 €
HSS10-60/SS/B	M10	1,50	60	12	16,00	18,27	9	6	-	62,75 €
HSS10-70/SS/B	M10	1,50	70	12	16,00	18,27	9	6	-	74,25 €
HSS10-80/SS/B	M10	1,50	80	12	16,00	18,27	9	6	-	70,32 €
HSS10-100/SS/B	M10	1,50	100	12	16,00	18,27	9	6	-	139,05 €
HSS12-30/SS/B	M12	1,75	30	16	18,00	24,33	11	8	-	91,44 €
HSS12-40/SS/B	M12	1,75	40	16	18,00	24,33	11	8	-	91,35 €
HSS12-50/SS/B	M12	1,75	50	16	18,00	24,33	11	8	-	126,86 €
HSS12-60/SS/B	M12	1,75	60	16	18,00	24,33	11	8	-	154,64 €
HSS12-70/SS/B	M12	1,75	70	16	18,00	24,33	11	8	-	124,14 €
HSS12-80/SS/B	M12	1,75	80	16	18,00	24,33	11	8	-	284,08 €
HSS12-100/SS/B	M12	1,75	100	16	18,00	24,33	11	8	-	183,52 €
HSS16-40/SS/B	M16	2,00	40	20	22,00	30,33	14	10	-	126,51 €
HSS16-50/SS/B	M16	2,00	50	20	22,00	30,33	14	10	-	186,38 €
HSS16-60/SS/B	M16	2,00	60	20	22,00	30,33	14	10	-	151,72 €
HSS16-70/SS/B	M16	2,00	70	20	22,00	30,33	14	10	-	170,46 €
HSS16-80/SS/B	M16	2,00	80	20	22,00	30,33	14	10	-	215,90 €

Dimensions in mm

Fax 0 825 88 6000
 Service 0,15 € / min
 + prix appel

Altri prodotti...



PSG155
Ingranaggio dritto di
precisione, Inox 303



CHAC4040SS
Cerniera, Quadrata
con rivetto e fori



SHS
Vite a spalla inox 303,
Inox 303



PRF JL4
Panel accessories,
Guarnizione - Ø 4mm



DOMI120
Accessori di
collegamento, Piastra



UTKpwr
Guida lineare
Utilitrack®, Profilo
guida a V



RJA10_03
Guarnizione in
gomma, Da
agganciare



TCXR
Tenditore per catena
automatico, Con
pignone acciaio



CPAS-H
Squadra pieghevole,
Per carico pesante



QTR
Cuscinetto a rulli
conici, Acciaio



ADL
Anello di
sollevamento,



CLSCLP_SS
Perno serie corta inox,
Inox - serie corta

Prodotti correlati



SHSS
Vite a spalla inox 416,
Inox 416 pretrattato



SHS
Vite a spalla inox 303,
Inox 303



HSS
Vite a spalla di
precisione ISO7379,
Acciaio trattato classe
12.9



SHN
Dado esagonale -
DIN934, Inox A2