

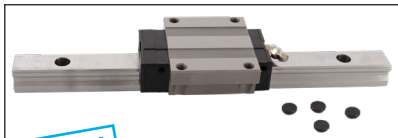
Linear ball slide **Eco range**



GCH15 GCH20

Dynamic load from 12600N to 21800N

- Linear slide unit for heavy loads not subject to vibrations or shocks
- Recirculating ball type linear slide
- Self-lubricated slide units
- Material:
Steel
- Note: part numbers of rails and slide units are separate: remember to order both

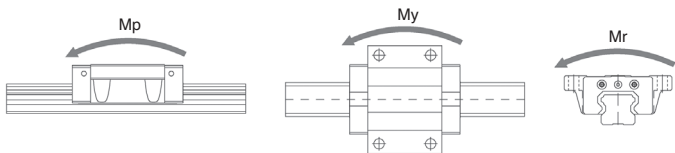
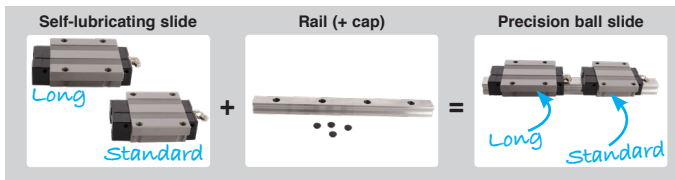


NEW!

Self-lubricating slide + Rail

Application

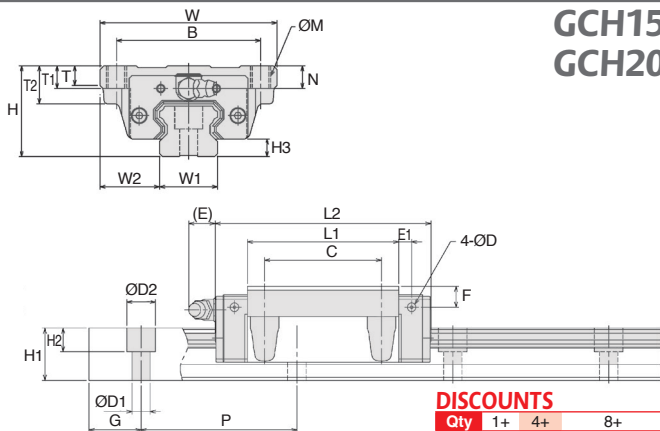
- Machine tool, CNC machine, automation device, industrial robot various industrial machine



Part number	Type	Basic load rating		Static allowance moment (kN-m)				Mass		
		C (N)	Co (N)	Mp	My	Mr	Slide (kg)	Rail (kg/m)		
GCH15-1LF	Standard	12.6	16.2	0.115	0.552	0.115	0.552	0.129	0.19	1.3
GCH20-1LF	Standard	18.3	23.9	0.221	1.049	0.221	1.049	0.251	0.41	2.2
GCH20G-1LF	Long	21.8	30.7	0.370	1.692	0.370	1.692	0.322	0.54	2.2

All dimensions in mm

GCH15 GCH20



DISCOUNTS

Qty	1+	4+	8+
Disc.	List	-6%	On request

Self-lubricated slide units

Part number	Type	H	W	L2	B	C	ØM	L1	T2	T	T1
GCH15-1LF	Standard	24	47	56.5	38	30	M5	40.8	-	7.0	11
GCH20-1LF	Standard	30	63	73.2	53	40	M6	53.1	-	9.2	10
GCH20G-1LF	Long	30	63	89.1	53	40	M6	69.0	-	9.2	10

Part number	N	E	F	E1	D	Grease Nipple	H3	Price Each 1 to 3
GCH15-1LF	6.0	4.7	3.7	3.25	3.3	A-M5	4.5	46.60 €
GCH20-1LF	7.5	10.7	6.7	4.25	3.3	B-M6F	6.0	55.15 €
GCH20G-1LF	7.5	10.7	6.7	4.25	3.3	B-M6F	6.0	76.10 €

Rail

Part number	W1 ±0.05	Length L	W2	H1	G	Pitch P	Ø D1	Ø D2	H2	Mass (kg)	Price Each 1 to 3
GCH15-180	15	180	16.0	13.0	20	60	4.5	7.5	5.3	0.234	18.40 €
GCH15-360	15	360	16.0	13.0	20	60	4.5	7.5	5.3	0.468	36.78 €
GCH15-480	15	480	16.0	13.0	20	60	4.5	7.5	5.3	0.624	49.05 €
GCH15-660	15	660	16.0	13.0	20	60	4.5	7.5	5.3	0.858	67.43 €
GCH15-900	15	900	16.0	13.0	20	60	4.5	7.5	5.3	1.170	91.95 €
GCH15-1200	15	1200	16.0	13.0	20	60	4.5	7.5	5.3	1.560	122.60 €
GCH15-1500	15	1500	16.0	13.0	20	60	4.5	7.5	5.3	1.950	153.28 €
GCH15-2400	15	2400	16.0	13.0	20	60	4.5	7.5	5.3	3.120	245.20 €
GCH20-240	20	240	21.5	16.5	20	60	6.0	9.5	8.5	0.528	26.83 €
GCH20-480	20	480	21.5	16.5	20	60	6.0	9.5	8.5	1.056	53.65 €
GCH20-660	20	660	21.5	16.5	20	60	6.0	9.5	8.5	1.452	73.78 €
GCH20-840	20	840	21.5	16.5	20	60	6.0	9.5	8.5	1.848	93.90 €
GCH20-1020	20	1020	21.5	16.5	20	60	6.0	9.5	8.5	2.244	114.00 €
GCH20-1200	20	1200	21.5	16.5	20	60	6.0	9.5	8.5	2.640	134.13 €
GCH20-1500	20	1500	21.5	16.5	20	60	6.0	9.5	8.5	3.300	167.68 €
GCH20-1980	20	1980	21.5	16.5	20	60	6.0	9.5	8.5	4.356	221.33 €

All dimensions in mm

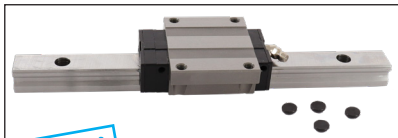
Linear ball slide **Eco range**



GCH25 GCH30

Dynamic load from 27000N to 60300N

- Linear slide unit for heavy loads not subject to vibrations or shocks
- Recirculating ball type linear slide
- Self-lubricated slide units
- Material:
Steel
- Note: part numbers of rails and slide units are separate: remember to order both

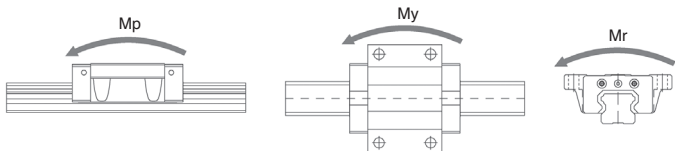
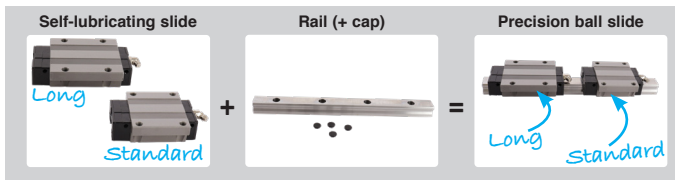


NEW!

Self-lubricating slide + Rail

Application

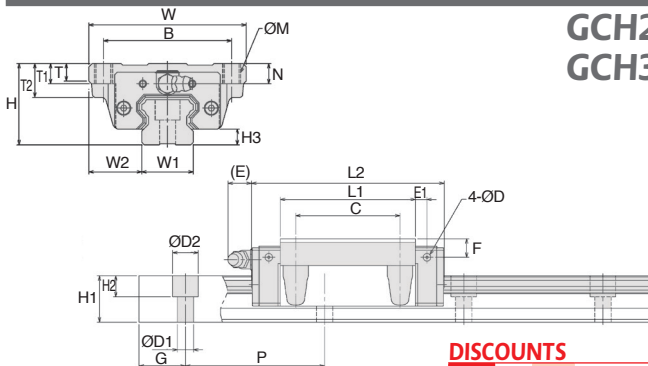
- Machine tool, CNC machine, automation device, industrial robot various industrial machine



Part number	Type	Basic load rating		Static allowance moment (kN-m)				Mass		
		C (N)	Co (N)	Mp	My	Mr	Slide (kg)	Rail (kg/m)		
GCH25-1LF	Standard	27,0	33,1	0,337	1,636	0,337	1,636	0,398	0,61	3,0
GCH25G-1LF	Long	32,8	43,6	0,596	2,760	0,596	2,760	0,525	0,82	3,0
GCH30-1LF	Standard	50,4	57,1	0,711	3,384	0,711	3,384	0,828	1,1	4,85
GCH30G-1LF	Long	60,3	73,6	1,203	5,506	1,203	5,506	1,067	1,3	4,85

All dimensions in mm

GCH25 GCH30



DISCOUNTS

Qty	1+	4+	8+
Disc. List	-6%	On request	

Self-lubricated slide units

Part number	Type	H	W	L2	B	C	ØM	L1	T2	T	T1
GCH25-1LF	Standard	36	70	83,2	57	45	M8	58,3	-	11,5	16
GCH25G-1LF	Long	36	70	103,1	57	45	M8	78,2	-	11,5	16
GCH30-1LF	Standard	42	90	99,3	72	52	M10	70,8	-	9,5	18
GCH30G-1LF	Long	42	90	121,5	72	52	M10	93,0	-	9,5	18

Part number	N	E	F	E1	D	Grease Nipple	H3	Price Each 1 to 3
GCH25-1LF	9,0	10,2	8	5,0	3,3	B-M6F	7,0	70,08 €
GCH25G-1LF	9,0	10,2	8	5,0	3,3	B-M6F	7,0	97,63 €
GCH30-1LF	7,3	9,8	5	5,8	5,2	B-M6F	7,5	83,00 €
GCH30G-1LF	7,3	9,8	5	5,8	5,2	B-M6F	7,5	104,75 €

Rail

Part number	W1 ±0.05	Length L	W2	H1	G	Pitch P	Ø D1	Ø D2	H2	Mass (kg)	Price Each 1 to 3
GCH25-240	23	240	23,5	20,0	20	60	7	11	9	0,720	29,88 €
GCH25-480	23	480	23,5	20,0	20	60	7	11	9	1,440	59,75 €
GCH25-660	23	660	23,5	20,0	20	60	7	11	9	1,980	82,18 €
GCH25-840	23	840	23,5	20,0	20	60	7	11	9	2,520	104,58 €
GCH25-1020	23	1020	23,5	20,0	20	60	7	11	9	3,060	127,00 €
GCH25-1200	23	1200	23,5	20,0	20	60	7	11	9	3,600	149,40 €
GCH25-1500	23	1500	23,5	20,0	20	60	7	11	9	4,500	186,75 €
GCH25-1980	23	1980	23,5	20,0	20	60	7	11	9	5,940	246,50 €
GCH25-3000	23	3000	23,5	20,0	20	60	7	11	9	9,000	373,50 €
GCH30-480	28	480	31,0	26,0	20	80	9	14	12	2,328	69,15 €
GCH30-640	28	640	31,0	26,0	20	80	9	14	12	3,104	92,20 €
GCH30-800	28	800	31,0	26,0	20	80	9	14	12	3,880	115,25 €
GCH30-1040	28	1040	31,0	26,0	20	80	9	14	12	5,044	149,80 €
GCH30-1200	28	1200	31,0	26,0	20	80	9	14	12	5,820	172,85 €
GCH30-1520	28	1520	31,0	26,0	20	80	9	14	12	7,372	218,95 €
GCH30-2000	28	2000	31,0	26,0	20	80	9	14	12	9,700	288,10 €
GCH30-2960	28	2960	31,0	26,0	20	80	9	14	12	14,356	426,40 €

All dimensions in mm

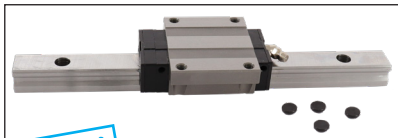
Linear ball slide **Eco range**



GCH35 GCH45

Dynamic load from
67000N to 129700N

- Linear slide unit for heavy loads not subject to vibrations or shocks
- Recirculating ball type linear slide
- Self-lubricated slide units
- Material:
Steel
- Note: part numbers of rails and slide units are separate: remember to order both

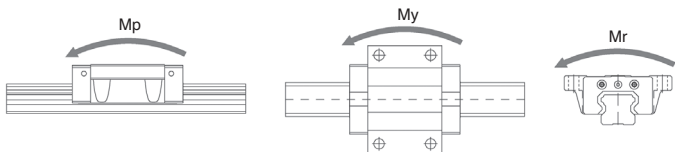
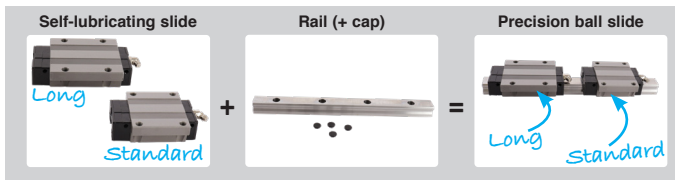


NEW!

Self-lubricating slide + Rail

Application

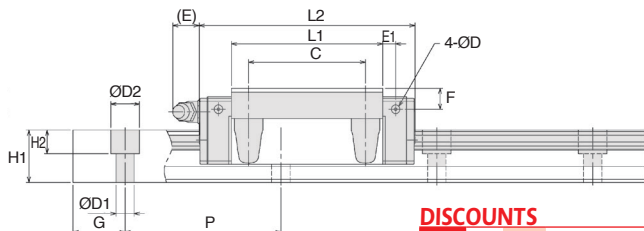
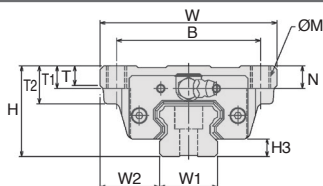
- Machine tool, CNC machine, automation device, industrial robot various industrial machine



Part number	Type	Basic load rating		Static allowance moment (kN-m)				Mass		
		C (N)	Co (N)	Mp 1 slide	Mp 2 slides	My 1 slide	My 2 slides	Mr 1 slide	Slide (kg)	Rail (kg/m)
GCH35-1LF	Standard	67,0	74,6	1,062	5,012	1,062	5,012	1,298	1,60	6,58
GCH35G-1LF	Long	80,2	96,2	1,797	8,172	1,797	8,172	1,674	2,01	6,58
GCH45-1LF	Standard	108,5	116,4	2,860	9,912	2,860	9,912	2,275	2,83	11,03
GCH45G-1LF	Long	129,7	150,1	4,533	16,161	4,533	16,161	2,935	3,70	11,03

All dimensions in mm

GCH35 GCH45



DISCOUNTS

Qty	1+	4+	8+
Disc.	List	-6%	On request

Self-lubricated slide units

Part number	Type	H	W	L2	B	C	ØM	L1	T2	T	T1
GCH35-1LF	Standard	48	100	111,8	82	62	M10	80,8	-	12,5	21
GCH35G-1LF	Long	48	100	137,2	82	62	M10	106,2	-	12,5	21
GCH45-1LF	Standard	60	120	139,0	100	80	M12	101,9	25	13,0	15
GCH45G-1LF	Long	60	120	170,8	100	80	M12	133,7	25	13,0	15

Part number	N	E	F	E1	D	Grease Nipple	H3	Price Each 1 to 3
GCH35-1LF	8	9,7	6,5	6,5	5,2	B-M6F	9	113,55 €
GCH35G-1LF	8	9,7	6,5	6,5	5,2	B-M6F	9	157,43 €
GCH45-1LF	10	16,0	8,0	8,0	3,3	B-PT1/8	10	143,53 €
GCH45G-1LF	10	16,0	8,0	8,0	3,3	B-PT1/8	10	179,28 €

Rail

Part number	W1 ±0.05	Length L	W2	H1	Pitch G	Ø P	Ø D1	Ø D2	H2	Mass (kg)	Price Each 1 to 3
GCH35-480	34	480	33,0	29	20,0	80	9	14	12	3,158	89,35 €
GCH35-640	34	640	33,0	29	20,0	80	9	14	12	4,211	119,13 €
GCH35-800	34	800	33,0	29	20,0	80	9	14	12	5,264	148,93 €
GCH35-1040	34	1040	33,0	29	20,0	80	9	14	12	6,843	193,60 €
GCH35-1200	34	1200	33,0	29	20,0	80	9	14	12	7,896	223,38 €
GCH35-1520	34	1520	33,0	29	20,0	80	9	14	12	10,002	282,95 €
GCH35-2960	34	2960	33,0	29	20,0	80	9	14	12	19,477	551,00 €
GCH45-840	45	840	37,5	38	22,5	105	14	20	17	9,265	225,33 €
GCH45-1050	45	1050	37,5	38	22,5	105	14	20	17	11,582	281,68 €
GCH45-1260	45	1260	37,5	38	22,5	105	14	20	17	13,898	338,00 €
GCH45-1470	45	1470	37,5	38	22,5	105	14	20	17	16,214	394,33 €
GCH45-1995	45	1995	37,5	38	22,5	105	14	20	17	22,005	535,15 €
GCH45-2940	45	2940	37,5	38	22,5	105	14	20	17	32,428	788,65 €

All dimensions in mm

Altri prodotti...



RFK38C

Riduttore ipoide inox,
fino a 200 Nm



BIM

Pistoncino a molla,
miniatura



VTSM

Ball head screws
Hygienic Design®,
Inox



YG1

Ingranaggio dritto
PRESTAZIONE, Acciaio
35NCD6



PSG15

Ingranaggio dritto di
precisione, Acciaio
20NCD2 cementato
 temprato



CLG2

Ingranaggio dritto in
plastica stampata ,
Nylon stampato



RHTccs

Ruota alte
temperature con foro
centrale, fino a 200kg



BC3

Panamech, Multi-
Beam inox - con
ganaschia di serraggio



CHINV

Cerniera invisibile,
Invisibile - Apertura



PW_PWG15

Vite senza fine di
precisione, Inox



SLB

Pistoncino a molla,
acciaio classe 5.8



PRF4590_E

Squadra di giunzione,
PRF4590

Prodotti correlati



GCH

Guida lineare a sfere -
Sfere inox, Carello -
da 514 N a 16700 N