



# Modular handle for aluminium profiles

## Ends and tubes for creating custom handles ETP

### - Interchangeable ends

### - Material:

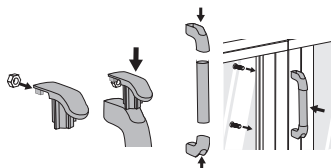
Ends : Black glass fibre reinforced nylon  
Tubes : Carbon fibre, aluminium or stainless steel

**NEW!**

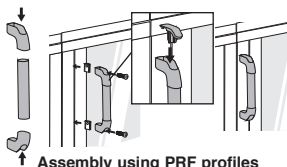
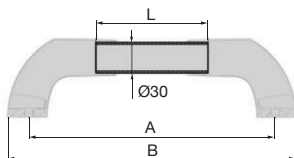
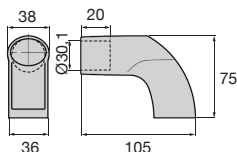


### Advantages

- Modular system allows assembly of tailor made handles



Assembly using square tube TUBE



Assembly using PRF profiles

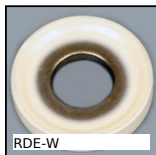
### DISCOUNTS

Qty	1+	50+	100+
Disc. List	-5%	On request	

Part number	Screw	A	L	B	Weight (g)	Price each 1 to 49
<b>End</b>						
ETP-B	M8	-	-	-	69,8	6,63 €
<b>Anodised aluminium tube</b>						
ETP-200/AA	-	200	70	240,8	17	5,61 €
ETP-300/AA	-	300	170	340,8	42	8,41 €
ETP-400/AA	-	400	270	440,8	67	11,22 €
ETP-500/AA	-	500	370	540,8	91	14,02 €
<b>Stainless steel tube</b>						
ETP-200/SS	-	200	70	240,8	51	14,02 €
ETP-300/SS	-	300	170	340,8	124	21,03 €
ETP-400/SS	-	400	270	440,8	197	26,64 €
ETP-500/SS	-	500	370	540,8	270	33,66 €

Dimensions in mm

## Altri prodotti...



RDE-W

Rondella di tenuta  
Hygienic Usit®, Inox -  
EPDM bianco



SMS

Ingranaggio conico  
spiroidale, 1:1



METEB

Barre autolubrificanti,  
Bronzo BP25



RFKfp

Riduttore inox -  
accessori, Piede di  
supporto



G0

Ingranaggio dritto  
acciaio, Acciaio  
20NCD2



DTR

Pignone tendicaten,  
Ruota dentata in  
plastica



ADSR

Giunto senza gioco  
Gerwah®, da 12.5 a  
525Nm



BPM-Z

Pressore a molla con  
intaglio e puntale a  
sfera, Corpo plastica  
+ sf...



gt64

Chiusura a farfalla,  
Tolleranze di  
montaggio normali



PR85

Piede fissabile con  
snodo - poliammide, Ø  
83



PT881

Pignone di trazione,  
Serie 881



DHX

Spina cilindrica filetto  
interno, estraibile DIN  
7979D

## Prodotti correlati



PRF4545

Profilato alluminio  
standard, 45 x 45 mm



PRF\_ECL

Fissaggio, Dado  
quadrato con  
linguetta - Acciaio