



Modular handle for aluminium profiles

Ends and tubes for creating custom handles ETP

- Interchangeable ends

- Material:

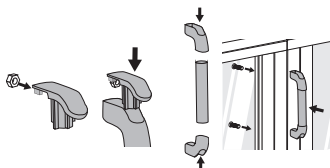
Ends : Black glass fibre reinforced nylon
Tubes : Carbon fibre, aluminium or stainless steel

NEW!

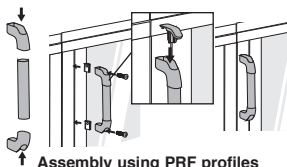
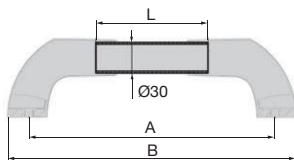
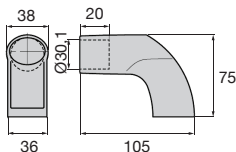


Advantages

- Modular system allows assembly of tailor made handles



Assembly using square tube TUBE



Assembly using PRF profiles

DISCOUNTS

Qty	1+	50+	100+
Disc. List	-5%	On request	

Part number	Screw	A	L	B	Weight (g)	Price each 1 to 49
End						
ETP-B	M8	-	-	-	69,8	6,63 €
Anodised aluminium tube						
ETP-200/AA	-	200	70	240,8	17	5,61 €
ETP-300/AA	-	300	170	340,8	42	8,41 €
ETP-400/AA	-	400	270	440,8	67	11,22 €
ETP-500/AA	-	500	370	540,8	91	14,02 €
Stainless steel tube						
ETP-200/SS	-	200	70	240,8	51	14,02 €
ETP-300/SS	-	300	170	340,8	124	21,03 €
ETP-400/SS	-	400	270	440,8	197	26,64 €
ETP-500/SS	-	500	370	540,8	270	33,66 €

Dimensions in mm

Altri prodotti...



G0

Ingranaggio dritto
acciaio, Acciaio
20NCD2



CLASS

Maniglia a ripresa -
maschio, Inox



PRF_CH

Catena porta cavo,
Supplied in metre
lengths



E40

Riduttore a rinvio
angolare, da 2.30 a
20 Nm



SH0

Ingranaggio elicoidale
ad assi paralleli,
Plastica lavorata
(delrin)



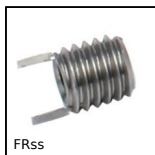
AT5P_AT10P

Plastra di giunzione
per cinghia AT, AT10



F7-E

Visualizzatore
multifunzione, Con
sensore di posizione
esterno



FRss

Inseri filettati, Inox



PR125

Piede fissabile con
snodo - poliammide, Ø
123



CQA20

Accessori per slitta di
regolazione miniatura,
20



RAS

Snodo angolare a 90°
DIN71802, Inox



VRSF

Anello di
sollevamento,
Orientabile maschio

Prodotti correlati



PRF4545

Profilato alluminio
standard, 45 x 45 mm



PRF_ECL

Fissaggio, Dado
quadrato con
linguetta - Acciaio