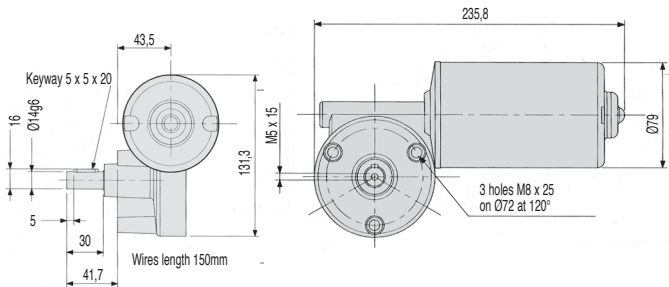
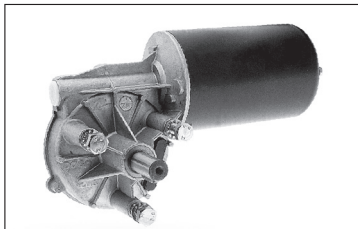


- Gearbox type: worm
- Bearings: self-lubricating bushes
- Angular backlash: N/A
- Max. axial load: N/A
- Max. radial load: N/A
- Working temp.: -40°C to +80°C
- Weight: 3kg
- Ingress protection: IP53

Accessories

- Speed controller not available
- Servo amplifier **FIRSTDC -1Q-60/10**
- Power Supplies **ALIDR120-14,ALIDRP240-24**
- **HPC is unable to supply a speed controller for this motor gearbox**
- **The encoder cannot be mounted behind the motor.**



DISCOUNTS

Qty.	1+	6+	10+
Disc.	List	-7%	On request

Part number	Ratios	Unloaded speed (rpm)	Loaded speed (rpm)	Nominal torque (Nm)	Nominal current (mA)	Price each 1 to 5
12 V DC Version						
DOG258-12-50	52:1	50	40	12	12	403,65 €
DOG258-12-30	52:1	30	25	15	10	403,65 €
24 V DC Version						
DOG258-24-50	52:1	50	40	12	6	403,65 €
DOG258-24-30	52:1	30	25	15	5	403,65 €

Dimensions in mm

Altri prodotti...



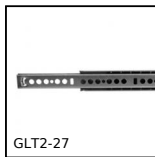
SLH

Attrezzo di bloccaggio a leva orizzontale, A leva orizzontale - acci...



CHB

Riduttore a ruota e vite senza fine, fino a 22 Nm



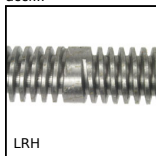
GLT2-27

Guide telescopiche per montaggio in scanalatura, Estensione parziale



MSP3815

Inserto con piastrina a incollare Masterplate®, rettangolare con pe...



LRH

Vite trapezoidale a doppia inclinazione, a doppia inclinazione - 1 f...



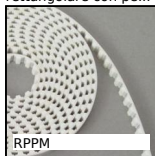
TCSH

Tenditore per catena automatico, Con pattino



MSP23

Inserto con piastrina a incollare Masterplate®, Cilindrico Ø23 con...



RPPM

Cinghia aperta al metro tipo RPP, RPP5 Poliuretano armatura in acciaio



MO

Vite senza fine, Acciaio non temprato



LRRss

Interblocco di sicurezza, Chiusura a molla - inox



INS_SS

Inserto auto-filettante, Inox 316



MC

Deceleratore, autocompensante - senza regolazione

Prodotti correlati



ALIDRP240

Alimentazione, 10 A



MDPOT

Potenzimetro,