

# Indexing plunger with cam



## DILC<sub>G</sub>

## Steel - Black thermoplastic

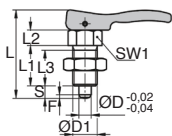
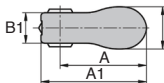
### - Indexing plunger with cam lever

- The lever makes handling quick and easy

### - Materials

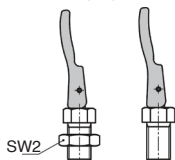
Threaded sleeve and locking pin in free-cutting steel  
Handle in glass-fibre reinforced thermoplastic  
PPA (high temperature resistant)

- Operating temperature 160°C (250°C peak)



## Advantages

- Quick and easy to use
- Suitable for high temperature applications
- With integrated locking function



With or without nut

## DISCOUNTS

Qty	1+	6+	20+
Disc.	List -10%	On request	

Part number	L	L1	L2	L3	SW1	SW2	Fx30°	Spring force initial pressure	
								F1 (N)	F2 (N)
<b>Without nut</b>									
DILC10-41A/G	39	17	7	15	13	-	1,3	5	12
DILC12-41A/G	44	20	8	17	14	-	1,8	6	14
DILC16-68A/G	56,9	26	10	23	19	-	2,3	15	35
DILC20-68A/G	62,9	28	12	25	22	-	2,8	15	34
<b>With nut</b>									
DILC10-41B/G	39	17	7	15	13	17	1,3	5	12
DILC12-41B/G	44	20	8	17	14	19	1,8	6	14
DILC16-68B/G	56,9	26	10	23	19	24	2,3	15	35
DILC20-68B/G	62,9	28	12	25	22	30	2,8	15	34

Part number	A	A1	B	B1	ØD	ØD1	Stroke S	Price each	
								1 to 5	
<b>Without nut</b>									
DILC10-41A/G	31,7	41,7	17,8	12,9	5	M10x1	5		14,82 €
DILC12-41A/G	31,6	41,7	17,8	12,9	6	M12x1,5	6		16,48 €
DILC16-68A/G	55,5	67,8	26,9	19,4	8	M16x1,5	8		19,68 €
DILC20-68A/G	53,4	67,8	26,9	19,4	10	M20x1,5	10		31,96 €
<b>With nut</b>									
DILC10-41B/G	31,7	41,7	17,9	12,9	5	M10x1	5		15,05 €
DILC12-41B/G	31,6	41,7	17,9	12,9	6	M12x1,5	6		16,72 €
DILC16-68B/G	55,5	67,8	26,9	19,4	8	M16x1,5	8		20,16 €
DILC20-68B/G	53,4	67,8	26,9	19,4	10	M20x1,5	10		32,60 €

Dimensions in mm

**HPC**

WEB  
01/2024

www.hpceurope.com

Tel. +33(0)4 37 496 496



# Indexing plunger with cam

Steel - Red thermoplastic

DILCR

## - Indexing plunger with cam lever

- The lever makes handling quick and easy

### - Materials

Threaded sleeve and locking

pin in free-cutting steel

Handle in glass-fibre

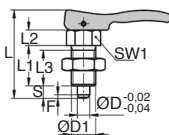
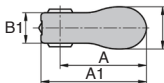
reinforced thermoplastic

PPA (high temperature

resistant) (red traffic

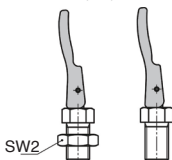
RAL3020)

- Operating temperature 160°C (250°C peak)



## Advantages

- Quick and easy to use
- Suitable for high temperature applications
- With integrated locking function



With or without nut

## DISCOUNTS

Qty	1+	6+	20+
Disc.	List	-10%	On request

Part number	L	L1	L2	L3	SW1	SW2	Fx30°	Spring force initial pressure	
								F1 (N)	F2 (N)
<b>Without nut</b>									
DILC10-41A/R	39	17	7	15	13	-	1,3	5	12
DILC12-41A/R	44	20	8	17	14	-	1,8	6	14
DILC16-68A/R	56,9	26	10	23	19	-	2,3	15	35
DILC20-68A/R	62,9	28	12	25	22	-	2,8	15	34
<b>With nut</b>									
DILC10-41B/R	39	17	7	15	13	17	1,3	5	12
DILC12-41B/R	44	20	8	17	14	19	1,8	6	14
DILC16-68B/R	56,9	26	10	23	19	24	2,3	15	35
DILC20-68B/R	62,9	28	12	25	22	30	2,8	15	34

Part number	A	A1	B	B1	ØD	ØD1	Stroke S	Price each
								1 to 5
<b>Without nut</b>								
DILC10-41A/R	31,7	41,7	17,8	12,9	5	M10x1	5	14,82 €
DILC12-41A/R	31,6	41,7	17,8	12,9	6	M12x1,5	6	16,48 €
DILC16-68A/R	55,5	67,8	26,9	19,4	8	M16x1,5	8	19,68 €
DILC20-68A/R	53,4	67,8	26,9	19,4	10	M20x1,5	10	31,96 €
<b>With nut</b>								
DILC10-41B/R	31,7	41,7	17,9	12,9	5	M10x1	5	15,05 €
DILC12-41B/R	31,6	41,7	17,9	12,9	6	M12x1,5	6	16,72 €
DILC16-68B/R	55,5	67,8	26,9	19,4	8	M16x1,5	8	20,16 €
DILC20-68B/R	53,4	67,8	26,9	19,4	10	M20x1,5	10	32,60 €

Dimensions in mm

# Indexing plunger with cam



**DILCGSS** **Stainless steel** - Black thermoplastic

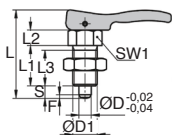
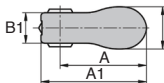
## - Indexing plunger with cam lever

- The lever makes handling quick and easy

### - Materials

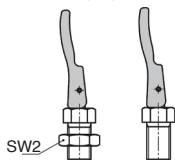
Threaded sleeve and locking pin in 303 stainless steel  
Handle in glass-fibre reinforced thermoplastic PPA (high temperature resistant)

- Operating temperature 160°C (250°C peak)



## Advantages

- Quick and easy to use
- Suitable for high temperature applications
- With integrated locking function



With or without nut

## DISCOUNTS

Qty	1+	6+	20+
Disc.	List -10%	On request	

Part number	L	L1	L2	L3	SW1	SW2	Fx30°	Spring force initial pressure	
								F1 (N)	F2 (N)
<b>Without nut</b>									
DILC10-41A/G/SS	39	17	7	15	13	-	1,3	5	12
DILC12-41A/G/SS	44	20	8	17	14	-	1,8	6	14
DILC16-68A/G/SS	56,9	26	10	23	19	-	2,3	15	35
DILC20-68A/G/SS	62,9	28	12	25	22	-	2,8	15	34
<b>With nut</b>									
DILC10-41B/G/SS	39	17	7	15	13	17	1,3	5	12
DILC12-41B/G/SS	44	20	8	17	14	19	1,8	6	14
DILC16-68B/G/SS	56,9	26	10	23	19	24	2,3	15	35
DILC20-68B/G/SS	62,9	28	12	25	22	30	2,8	15	34

Part number	A	A1	B	B1	ØD	ØD1	Stroke S	Price each
								1 to 5
<b>Without nut</b>								
DILC10-41A/G/SS	31,7	41,7	17,8	12,9	5	M10x1	5	21,60 €
DILC12-41A/G/SS	31,6	41,7	17,8	12,9	6	M12x1,5	6	25,53 €
DILC16-68A/G/SS	55,5	67,8	26,9	19,4	8	M16x1,5	8	34,64 €
DILC20-68A/G/SS	53,4	67,8	26,9	19,4	10	M20x1,5	10	66,82 €
<b>With nut</b>								
DILC10-41B/G/SS	31,7	41,7	17,9	12,9	5	M10x1	5	22,88 €
DILC12-41B/G/SS	31,6	41,7	17,9	12,9	6	M12x1,5	6	26,95 €
DILC16-68B/G/SS	55,5	67,8	26,9	19,4	8	M16x1,5	8	36,76 €
DILC20-68B/G/SS	53,4	67,8	26,9	19,4	10	M20x1,5	10	68,07 €

Dimensions in mm

### - Indexing plunger with cam lever

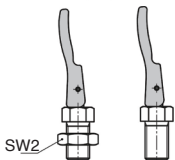
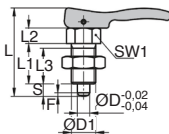
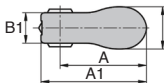
- The lever makes handling quick and easy

### - Materials

Threaded sleeve and locking pin in 303 stainless steel  
Handle in glass-fibre reinforced thermoplastic  
PPA (high temperature resistant)

- Operating temperature 160°C (250°C peak) (red traffic RAL3020)

- Operating temperature 160°C (250°C peak)



With or without nut



## Advantages

- Quick and easy to use
- Suitable for high temperature applications
- With integrated locking function

## DISCOUNTS

Qty	1+	6+	20+
Disc.	List -10%	On request	

Part number	L	L1	L2	L3	SW1	SW2	Fx30°	Spring force initial pressure	
								F1 (N)	F2 (N)
<b>Without nut</b>									
DILC10-41A/R/SS	39	17	7	15	13	-	1,3	5	12
DILC12-41A/R/SS	44	20	8	17	14	-	1,8	6	14
DILC16-68A/R/SS	56,9	26	10	23	19	-	2,3	15	35
DILC20-68A/R/SS	62,9	28	12	25	22	-	2,8	15	34
<b>With nut</b>									
DILC10-41B/R/SS	39	17	7	15	13	17	1,3	5	12
DILC12-41B/R/SS	44	20	8	17	14	19	1,8	6	14
DILC16-68B/R/SS	56,9	26	10	23	19	24	2,3	15	35
DILC20-68B/R/SS	62,9	28	12	25	22	30	2,8	15	34

Part number	A	A1	B	B1	ØD	ØD1	Stroke S	Price each
								1 to 5
<b>Without nut</b>								
DILC10-41A/R/SS	31,7	41,7	17,8	12,9	5	M10x1	5	21,60 €
DILC12-41A/R/SS	31,6	41,7	17,8	12,9	6	M12x1,5	6	25,53 €
DILC16-68A/R/SS	55,5	67,8	26,9	19,4	8	M16x1,5	8	34,64 €
DILC20-68A/R/SS	53,4	67,8	26,9	19,4	10	M20x1,5	10	66,82 €
<b>With nut</b>								
DILC10-41B/R/SS	31,7	41,7	17,9	12,9	5	M10x1	5	22,88 €
DILC12-41B/R/SS	31,6	41,7	17,9	12,9	6	M12x1,5	6	26,95 €
DILC16-68B/R/SS	55,5	67,8	26,9	19,4	8	M16x1,5	8	36,76 €
DILC20-68B/R/SS	53,4	67,8	26,9	19,4	10	M20x1,5	10	68,07 €

Dimensions in mm

## Altri prodotti...



HSE-HSB

Distanziatore esagonale, Acciaio



STU

Boccola a sfere lineare e rotativa, Acciaio



DGSI

Testa a snodo femmina, Acciaio / acciaio - Serie economica



VB

Volantino a 6 lobi, Duroplast - Ottone



SVT5

Martinetto a vite - Vite traslante, Vite traslante



MDPOT

Potenziometro,



HFL

Ruota libera, Combinata ad aghi



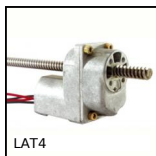
CM\_CO

Attrezzi Hygienic Usit® and Hygienic Design®, Protective inserts f...



SSB

Ingranaggio conico inox, 1:1



LAT4

Attuatore lineare a motore 4A, 4 ampere



H3

Ingranaggio elicoidale ad assi incrociati a 90°, Plastica lavorata



BPHT

Sfera portante fissaggio con perno filettato, Forte

## Prodotti correlati



DIV

Pistoncino a molla, Bloccabile - Acciaio