

Worm and wheel gearbox



CHB3B5 Flange B5 - Torque up to 22Nm

- Ratio from 7:1 to 70:1
- With B5 input flange
- Maximum input speed 2800rpm
- Material :
Aluminium
- Lubrication synthetic oil ISO VG320
- Can be mounted in any position
- Operating T°: -25°C to +50°C

Advantages

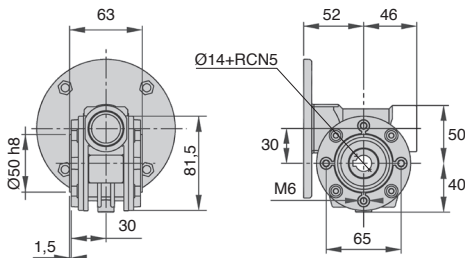
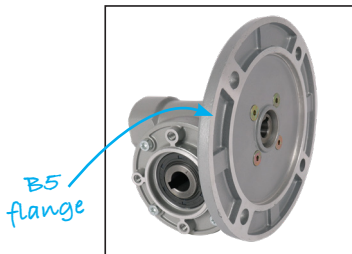
- Ideal with a 4-pole motor running at 1400 rpm

Info

- *RCN: Standard keyway
- Flange dimensions and input bore: see CHT (tome 2 p.280-284) motor

Accessories

- Feet CHB3-FP
- CHB3-X and CHB3-DX
- CHB3-DX output shafts
- Reaction arm CHB3-BR
- Motor CHT56B4-B5, CHT63B4-B5



DISCOUNTS

Qty	1+	3+	6+
Disc.	List	-20%	On request

Part number	Ratio	Input flange	Max output torque		Self locking	output	Weight (kg)	Price Each 1 to 2
			(at 1400rpm input)	(Nm)				
CHB3-7-63B5	7	63B5	8	No	No	1		
CHB3-10-63B5	10	63B5	11	No	No	1		
CHB3-15-63B5	15	63B5	16	Uncertain	No	1		
CHB3-20-63B5	20	63B5	20	Uncertain	No	1		
CHB3-30-63B5	30	63B5	22	Uncertain	No	1		
CHB3-40-63B5	40	63B5	18	Yes	Low	1		
CHB3-60-63B5	60	63B5	18	Yes	Low	1		
CHB3-70-56B5	70	56B5	15	Yes	Yes	1		

Dimensions in mm



Worm and wheel gearbox

Flange B14 - Torque up to 22Nm CHB3B14

- Ratio from 7:1 to 70:1
- With B14 input flange
- Maximum input speed 2800rpm
- Material : Aluminium
- Lubrication synthetic oil ISO VG320
- Can be mounted in any position
- Operating T°: -25°C to +50°C

Advantages

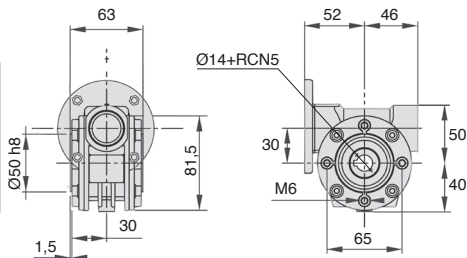
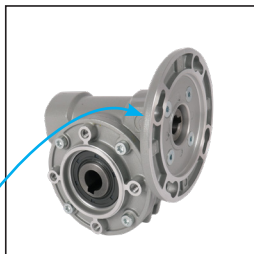
- Ideal with a 4-pole motor running at 1400 rpm

Info

- *RCN: Standard keyway
- Flange dimensions and input bore: see CHT (tome 2 p.280-284) motor

Accessories

- Feet CHB3-FP
- CHB3-X and CHB3-DX output shafts
- Reaction arm CHB3-BR
- Motor CHT56B4-B14, CHT63B4-B14



DISCOUNTS

Qty	1+	3+	6+
Disc.	List	-20%	On request

Part number	Ratio	Input flange	Max output torque		Weight (kg)	Price Each 1 to 2
			(at 1400rpm input)	Self locking output		
			(Nm)	Static	Dynamic	
CHB3-7-63B14	7	63B14	8	No	No	1
CHB3-10-63B14	10	63B14	11	No	No	1
CHB3-15-63B14	15	63B14	16	Uncertain	No	1
CHB3-20-63B14	20	63B14	20	Uncertain	No	1
CHB3-30-63B14	30	63B14	22	Uncertain	No	1
CHB3-40-63B14	40	63B14	18	Yes	Low	1
CHB3-60-63B14	60	63B14	18	Yes	Low	1
CHB3-70-56B14	70	56B14	15	Yes	Yes	1

Dimensions in mm

Worm and wheel gearbox



CHB4B5 Flange B5 - Torque up to 41Nm

Ratio from 7:1 to 100:1

- With B5 input flange
- Maximum input speed 2800rpm
- Material :
Aluminium
- Lubrication synthetic oil ISO VG320
- Can be mounted in any position
- Operating T°: -25°C to +50°C

Advantages

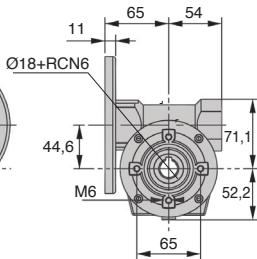
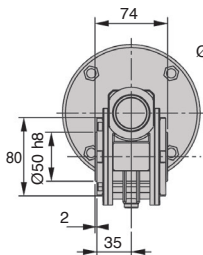
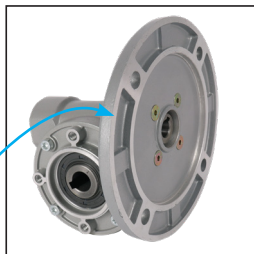
- Ideal with a 4-pole motor running at 1400 rpm

Info

- *RCN: Standard keyway
- Flange dimensions and input bore: see CHT (tome 2 p.280-284) motor

Accessories

- Feet CHB4-FP
- CHB4-X and CHB4-DX output shafts
- Reaction arm CHB4-BR
- Motor CHT63B4-B5, CHT71B4-B5



DISCOUNTS

Qty	1+	3+	6+
Disc.	List	-20%	On request

Part number	Ratio	Input flange	Max output torque (at 1400rpm input)		Weight (kg)	Price Each 1 to 2
			(Nm)	Self locking output Static Dynamic		
CHB4-7-63B5	7	63B5	22	No No	2,1	
CHB4-10-63B5	10	63B5	30	No No	2,1	
CHB4-14-63B5	14	63B5	29	No No	2,1	
CHB4-20-63B5	20	63B5	38	Uncertain No	2,1	
CHB4-28-63B5	28	63B5	40	Uncertain No	2,1	
CHB4-35-63B5	35	63B5	41	Uncertain No	2,1	
CHB4-46-63B5	46	63B5	37	Yes Low	2,1	
CHB4-60-63B5	60	63B5	37	Yes Low	2,1	
CHB4-70-63B5	70	63B5	33	Yes Low	2,1	
CHB4-100-63B5	100	63B5	30	Yes Yes	2,1	

Dimensions in mm



Worm and wheel gearbox

Flange B14 - Torque up to 41Nm CHB4B14

Ratio from 7:1 to 100:1

- With B14 input flange
- Maximum input speed 2800rpm
- Material :
Aluminium
- Lubrication synthetic oil ISO VG320
- Can be mounted in any position
- Operating T°: -25°C to +50°C

Advantages

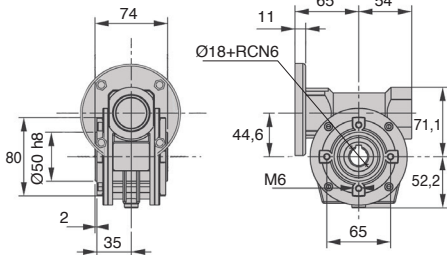
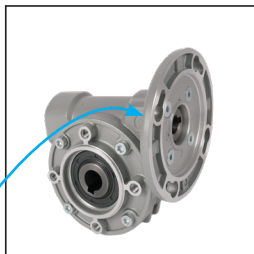
- Ideal with a 4-pole motor running at 1400 rpm

Info

- *RCN: Standard keyway
- Flange dimensions and input bore: see CHT motor (tome 2 p.280-284)

Accessories

- Feet CHB4-FP
- CHB4-X and CHB4-DX output shafts
- Reaction arm CHB4-BR
- Motor CHT63B4-B14, CHT71B4-B14



DISCOUNTS

Qty	1+	3+	6+
Disc.	List	-20%	On request

Part number	Ratio	Input flange	Max output torque (at 1400rpm input)		Weight (kg)	Price Each 1 to 2
			Static	Dynamic		
CHB4-7-63B14	7	63B14	22	No	2,1	
CHB4-10-63B14	10	63B14	30	No	2,1	
CHB4-14-63B14	14	63B14	29	No	2,1	
CHB4-20-63B14	20	63B14	38	Uncertain	2,1	
CHB4-28-63B14	28	63B14	40	Uncertain	2,1	
CHB4-35-63B14	35	63B14	41	Uncertain	2,1	
CHB4-46-63B14	46	63B14	37	Yes	Low 2,1	
CHB4-60-63B14	60	63B14	37	Yes	Low 2,1	
CHB4-70-63B14	70	63B14	33	Yes	Low 2,1	
CHB4-100-63B14	100	63B14	30	Yes	Yes 2,1	

Dimensions in mm

Worm and wheel gearbox



CHB5B5 Flange B5 - Torque up to 73Nm

Ratio from 7:1 to 100:1

- With B5 input flange
- Maximum input speed 2800rpm
- Material :
Aluminium
- Lubrication synthetic oil ISO VG320
- Can be mounted in any position
- Operating T°: -25°C to +50°C

Advantages

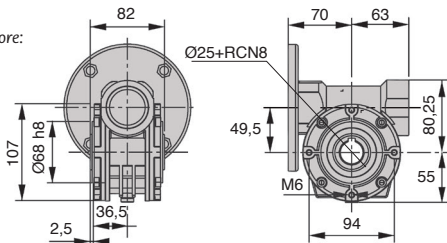
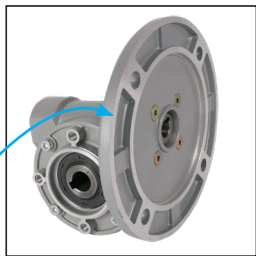
- Ideal with a 4-pole motor running at 1400 rpm

Info

- *RCN: Standard keyway
- Flange dimensions and input bore: see **CHT (tome 2 p.280-284)** motor

Accessories

- Feet **CHB5-FP**
- **CHB5-X** and **CHB5-DX** output shafts
- Reaction arm **CHB5-BR**
- Motor **CHT63B4-B5**, **CHT71B4-B5**



DISCOUNTS

Qty	1+	3+	6+
Disc.	List	-20%	On request

Part number	Ratio	Input flange	Max output torque (at 1400rpm input)		Weight (kg)	Price Each 1 to 2
			Static (Nm)	Dynamic (Nm)		
CHB5-7-71B5	7	71B5	40	No	No	3
CHB5-10-71B5	10	71B5	49	No	No	3
CHB5-14-71B5	14	71B5	57	No	No	3
CHB5-18-71B5	18	71B5	52	Uncertain	No	3
CHB5-24-71B5	24	71B5	67	Uncertain	No	3
CHB5-28-71B5	28	71B5	73	Uncertain	No	3
CHB5-36-71B5	36	71B5	61	Uncertain	No	3
CHB5-45-71B5	45	71B5	65	Yes	Low	3
CHB5-60-71B5	60	71B5	60	Yes	Low	3
CHB5-70-63B5	70	63B5	55	Yes	Low	3
CHB5-80-63B5	80	63B5	54	Yes	Yes	3
CHB5-100-63B5	100	63B5	50	Yes	Yes	3

Dimensions in mm



Worm and wheel gearbox

Flange B14 - Torque up to 73Nm CHB5B14

Ratio from 7:1 to 100:1

- With B14 input flange
- Maximum input speed 2800rpm
- Material :
Aluminium
- Lubrication synthetic oil ISO VG320
- Can be mounted in any position
- Operating T°: -25°C to +50°C

Advantages

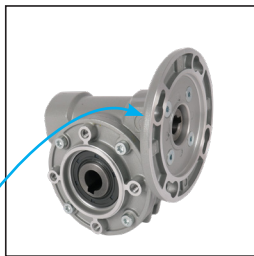
- Ideal with a 4-pole motor running at 1400 rpm

Info

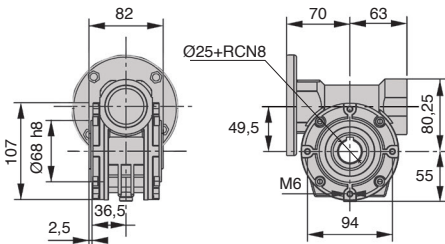
- *RCN: Standard keyway
- Flange dimensions and input bore: see CHT (tome 2 p.280-284) motor

Accessories

- Feet CHB5-FP
- CHB5-X and CHB5-DX output shafts
- Reaction arm CHB5-BR
- Motor CHT63B4-B5, CHT71B4-B5



B14 flange



DISCOUNTS

Qty	1+	3+	6+
Disc.	List	-20%	On request

Part number	Ratio	Input flange	Max output torque (at 1400rpm input)		Self locking	Weight (kg)	Price Each 1 to 2
			Static (Nm)	Dynamic (Nm)			
CHB5-7-71B14	7	71B14	40	No	No	3	
CHB5-10-71B14	10	71B14	49	No	No	3	
CHB5-14-71B14	14	71B14	57	No	No	3	
CHB5-18-71B14	18	71B14	52	Uncertain	No	3	
CHB5-24-71B14	24	71B14	67	Uncertain	No	3	
CHB5-28-71B14	28	71B14	73	Uncertain	No	3	
CHB5-36-71B14	36	71B14	61	Uncertain	No	3	
CHB5-45-71B14	45	71B14	65	Yes	Low	3	
CHB5-60-71B14	60	71B14	60	Yes	Low	3	
CHB5-70-63B14	70	63B14	55	Yes	Low	3	
CHB5-80-63B14	80	63B14	54	Yes	Yes	3	
CHB5-100-63B14	100	63B14	50	Yes	Yes	3	

Dimensions in mm

CHBFP

For CHB gearbox

Foot for CHB gearbox

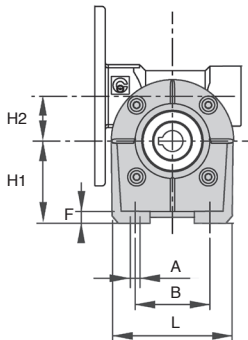
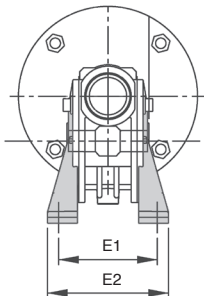
- External mounting
- Sold in pairs
- Material :
Aluminium

Accessories

- CHB gearboxes



Typical application



DISCOUNTS

Qty	1+	3+	6+
Disc.	List	-20%	On request

Part number	A	B	L	H1	H2	E1	E2	F	Price Each
									1 to 2
CHB3-FP	7	50	80	55	30	66	81	8	
CHB4-FP	9	52	90	72	45	81	98	10	
CHB5-FP	9	63	109,5	82	50	99	124	10	

Dimensions in mm

New**Reaction arm****For CHB gearbox****CHBBR**

Fitted to the output of CHB gearboxes

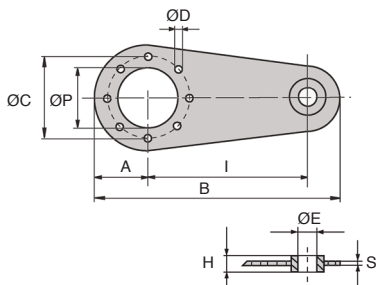
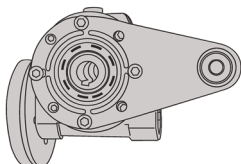
- Material:
Steel

Accessories

- CHB gearboxes



Typical application



DISCOUNTS

Qty	1+	3+	6+
Disc.	List	-20%	On request

Part number	L	A	B	ØP	ØC	ØD	H	ØE	S	Price Each 1 to 2
CHB3-BR	100	40	157,5	50	65	7	14	8	4	
CHB4-BR	100	40	157,5	50	65	7	14	8	4	
CHB5-BR	100	55	172,5	68	94	7	14	8	4	

Dimensions in mm

Tel. +33(0)4 37 496 496

cial2@hpceurope.com

WEB
04/2021

HPC

Single or double output shaft

New

CHBx CHBDx

For CHB gearbox

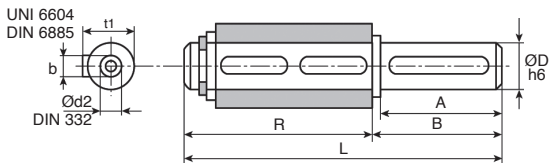
Can be fitted in the output bore of CHB gearboxes

- Material:
C40 steel



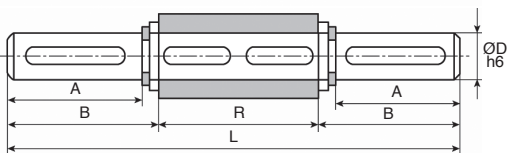
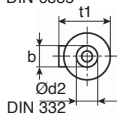
Accessories

- CHB gearboxes



CHB-X single shaft

UNI 6604
DIN 6885



CHB-DX double shaft

DISCOUNTS

Qty	1+	3+	6+
Disc.	List	-20%	On request

Part number	ØDh6	A	B	b	t1	R	L	Ød2	Price Each 1 to 2
Single shaft									
CHB3-X	14	30	35	5	16,0	61	96	M5x13	
CHB4-X	18	40	45	6	20,5	70	115	M6x16	
CHB5-X	25	60	65	8	28,0	89	154	M8x20	
Double shaft									
CHB3-DX	14	30	32,5	5	16,0	55	120,0	M5x13	
CHB4-DX	18	40	42,7	6	20,5	64	149,4	M6x16	
CHB5-DX	25	60	63,2	8	28,0	82	208,4	M8x20	

Dimensions in mm

HPC

WEB
04/2021

www.hpceurope.com

Tel. +33(0)4 37 496 496