

- Screw-on hinge
- Opening angle 270°
- Materials:
 - Aluminium 6060 T5
 - Stainless steel spindle
 - Plastic caps

Advantage

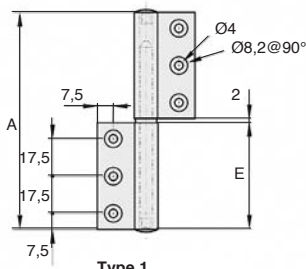
- Reduced space requirement
- Lift-off



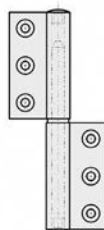
Clear anodised



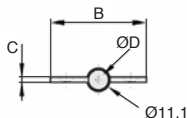
Black anodised



Type 1



Type 2



DISCOUNTS

Qty	1+	6+	20+	50+
Disc	Net	-5%	-10%	On request

Part N°	Type	Finish	A	B	C	ØD	E	Weight	Price each
								(g)	1 à 5
CHA-GC-9-1/AL/IN	1	Clear anodised	102	45,9	2,5	6,1	50	50	17,14 €
CHA-GC-9-2/AL/IN	2	Clear anodised	102	45,9	2,5	6,1	50	50	17,14 €
CHA-GC-9-1/AL/BK	1	Black anodised	102	45,9	2,5	6,1	50	50	17,14 €
CHA-GC-9-2/AL/BK	2	Black anodised	102	45,9	2,5	6,1	50	50	17,14 €

All dimensions in mm

0 825 88 6000

Service 0,15 € / min
+ prix appel

Altri prodotti...



PSPE22

Conical flexible shaft
handlee Ø22, Black
PVC



DB

Ingranaggio conico in
acciaio, 2:1



WSRM

Dado cilindrico in
polimero, Polimero
(Iglidur®) - 1 filetto



PSG2

Ingranaggio dritto di
precisione, Acciaio
20NCD2 cementato
temprato



DOMI80

Kit di raccordo, Kit di
raccordo XZ



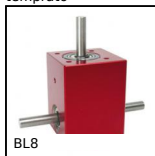
ABL100000

Spazzola antistatica,
Per superfici fragili



APB_F

Perno di fissaggio per
morsetti, Filettato



BL8

Rinvio angolare, da
0.20 a 2 Nm



UGCG

Unità di guida per
cilindrico, Colonna di



UCF

Cuscinetto a flangia
quadrata in ghisa,



CHAEss

Cerniera estetica, Inox



SHTP

Tavola lineare
Drylin®, Economica

Prodotti correlati



CHA_GC_9SS

Cerniera a bandiera
inox, A saldare



CHA_GC_9SS

Cerniera (tutto inox),
A saldare



CHAGC-AL

Cerniera ad avvitare,
Sfilabile