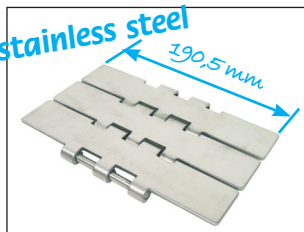


- Ideal for moving large or heavy loads
- Completely smooth surface
- With double hinge
- Materials:
 - Plates: polished cold-laminated stainless steel (30HRC min.)
 - Pin: special stainless steel (41-44HRC)
- Operating temp.: -40°C to +260°C (+120°C in humid environments)
- Length 3048mm (80 plates)

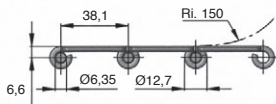
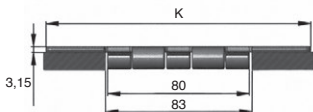
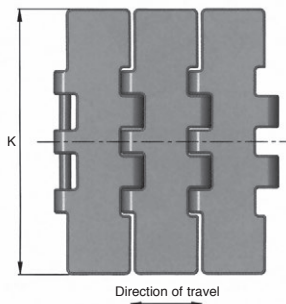


Advantages

- Large width
- High carrying capacity

Associated products

- Drive sprocket **PT821**
- Idler sprocket **PR821**
- Idler **DBL805**



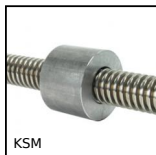
DISCOUNTS

Qty.	1+	5+	10+
Disc.	List	-5%	On request

Part number	Width K (mm)	Length (mm)	Breaking load (N)	Weight (kg/m)	Price each 1 to 4
CAP805-190/SS	190,5	3048	19000	5,8	252,74 €

Dimensions in mm

Altri prodotti...



KSM

Dado cilindrico in acciaio, Acciaio - 1 filetto



DOMI80

Accessori di collegamento, Piatto girevole



HTD3M_09

Puleggia dentata di trasmissione tipo HTD, HTD3 Alluminio



SVT20

Martinetto a vite - Vite traslante, Vite traslante



RDE-B

Rondella di tenuta Hygienic Usit®, Stainless steel - EPDM blu



BLHT70

Rinvio angolare a T, da 26 a 128 Nm



ZBconique

Ingranaggio conico in plastica, 1:1



SCA

Serracavo, Acciaio



G0

Ingranaggio dritto acciaio, Acciaio 20NCD2



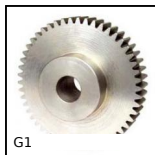
PML

Piede massiccio per carichi pesanti, Ø 100, 120 o 150



AC

Piastrina di riscontro, 15mm



G1

Ingranaggio dritto acciaio, Acciaio 20NCD2

Prodotti correlati



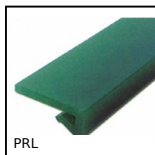
PT821

Pignone di trazione, Serie 821 e 805



PR821

Ruota di rinvio, Serie 821 e 805



PRL

Profilo supporto per catena, Profilo ad L ad incastro