

Right angled gearbox, double output shafts

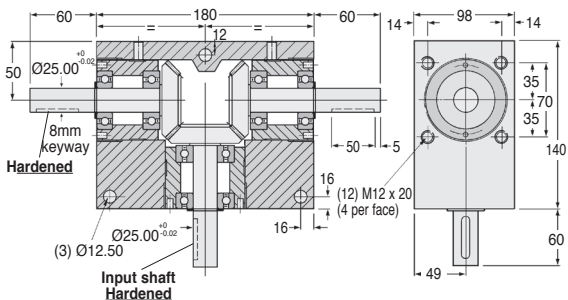
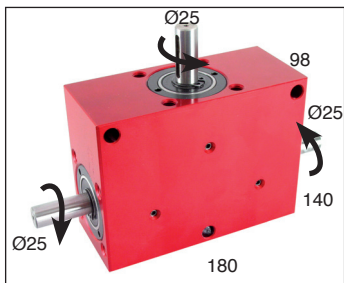
BLHM70

Torque up to 128Nm

- The two outputs rotate in opposite directions
- Ratios of 1:1 to 2:1
- Output backlash $\approx 1'$
- Max. speed: 4000 rpm
- Materials: casing: anodised aluminium
input: hardened steel,
output: hardened steel
- Weight: 8.76 kg

Options

- Can be modified to your specifications



Output torque Nm (NM values given as a guide only)

| Ratios | 1:1 | 2:1 |
|-------------|-----|-----|
| 3000 | 43 | 26 |
| 2000 | 47 | 30 |
| INPUT SPEED | 51 | 34 |
| 500 (rpm) | 64 | 38 |
| 100 | 85 | 51 |
| 50 | 94 | 60 |
| 10 | 128 | 77 |

Innovative!
Outputs rotate in different directions

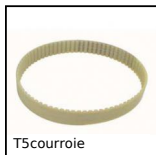
DISCOUNTS

| Qty. | 1+ | 2+ | 4+ | 6+ |
|-------|------|------|------|------------|
| Disc. | List | -15% | -20% | On request |

| Part number | Ratio | Efficiency at 1000 rpm | Max. input speed (rpm) | Max. output speed (rpm) | Module | Price each |
|-------------|-------|------------------------|------------------------|-------------------------|--------|------------|
| BLHM70-1 | 1:1 | 88% | 3000 | 3000 | 4,0 | 2 152,92 € |
| BLHM70-2 | 2:1 | 88% | 3000 | 1500 | 2,5 | 2 152,92 € |

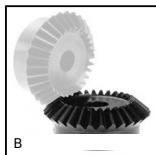
Dimensions in mm

Altri prodotti...



T5courroie

Cinghia di
posizionamento T, T5
Poliuretano armatura
in acciaio



B

Ingranaggio conico -
Acciaio 60C40, 1:1



GE1006

Chiusura a leva
adattabile, Per
aggancio in gola



PR125

Piede fissabile con
snodo - poliammide, Ø
123



PCS75K

Pignone a catena
dentatura temprata,
19.05mm (DIN12B-1)



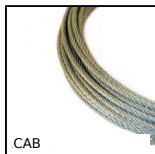
VQTplqn

Chiusura ¼ di giro -
Piastra di bloccaggio,
Montaggio ad incastro



PW_PWG15

Vite senza fine di
precisione, Acciaio



CAB

Cavo di fissaggio,
Acciaio galvanizzato



VRSF

Anello di
sollevamento,



RPC

Ruota, Poliammide



CHTRP

Riduttore a rinvio
angolare a L o a T,



MEB

Ingranaggio conico in
plastica stampata, 1:1

Prodotti correlati



BLH70

Rinvio angolare a L,
da 26 a 128 Nm



BLHT70

Rinvio angolare a T,
da 26 a 128 Nm