

Angular clamp

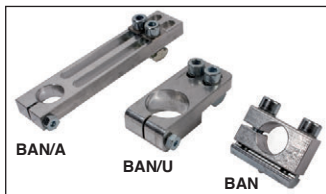


BAN

For profile systems

- Easy to add to most profiles
- Material :
Aluminium
- Fixing kit not supplied

NEW!

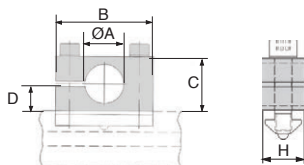


Advantages

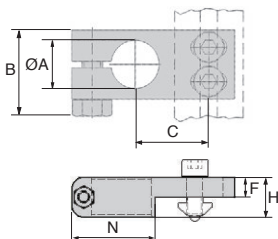
- Wide range of assembly possibilities
- **Angular clamp** : space saving when assembling compact
- **Universal angular clamp** : Compatible with 20mm and 300 mm profile systems with oblong holes
- **Adjustable angular clamp** : Flexible positioning of gripping elements due to use of rectangular holes

Accessories

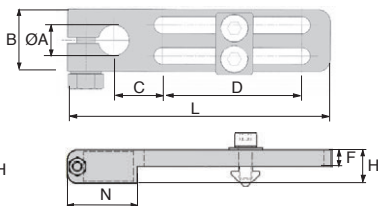
- PRF-ECLM8 nut
- M8 screw, length 20-22mm



Angular clamp



Universal angular clamp



Adjustable angular clamp

DISCOUNTS

Qty	1+	10+	30+
Disc.	List	-5%	On request

Part number	Type	ØA	B	C	D	L	H	F	N	Weight (g)	Price each 1 to 9
BAN-20	-	20	45	24,5	12	-	20	-	-	103	26,21 €
BAN-30	-	30	68	34	17	-	20	-	-	172	30,89 €
BAN-20/U	universal	20	30	32-42	-	-	20	10	33	114	26,20 €
BAN-30/U	universal	30	35	37-47	-	-	20	10	42	122	32,10 €
BAN-20/A	adjustable	20	30	21	100	130	12,5	-	-	140	32,29 €
BAN-30/A	adjustable	30	35	25,5	100	159	20	10	42	213	37,57 €

Dimensions in mm

Altri prodotti...



T5P_T10P
Piastra di giunzione
per cinghia T, T10



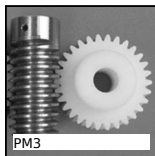
BOX-TOR-C
Valigetta di
guarnizioni toriche in
nitrile, 3.00 x 1.50mm
a 30.20 x...



SRG
Chiusura a leva
regolabile, Corsa da
96mm a 121,7mm



PITAss
Pistoncino a molla,
con maniglia a T



PM3
Coppia ruota e vite
senza fine, Plastica
lavorata (delrin)



BSCf
Manopola, Con coppia
regolabile



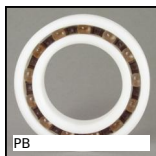
CHM63-MOT
Motoriduttore AC
asincrono 0,37 a
1,5kW, 0.37 a 1.5kW



GCL
Guida lineare a sfere
Eco, economica



R203
Molla per stampi
ISO10243, Leggero



PB
Cuscinetto in plastica,
Plastica - materiale



ZA
Albero per guida
lineare, Acciaio



ZBconique
Ingranaggio conico in
plastica, 1:1

Prodotti correlati



BAN
Connettore / supporto
per profili alluminio,
Universale



PRF_ECL
Fissaggio, Dado
quadrato con
linguetta - Acciaio