

New

Leadscrew locking ring

Single piece assembly

BAGTR**- Single piece leadscrew locking assembly**

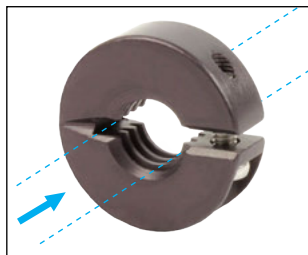
- Material:
Anodised aluminium

Accessory

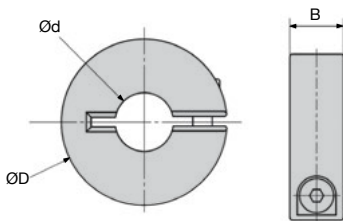
- LFM leadscrew

Info

- Screw head can be larger than diameter $\varnothing D$
- Overall dimension is $\varnothing D + 2$ mm



Typical application:
fitted to a LFM leadscrew

**DISCOUNTS**

| Qty | 1+ | 10+ | 25+ | 50+ |
|-------|------|------|------|------------|
| Disc. | List | -10% | -18% | On request |

| Part number | $\varnothing d$ | $\varnothing D$ | B | Static axial load | Price each 1 to 9 |
|----------------------------|-----------------|-----------------|----|-------------------|-------------------|
| Right handed thread | | | | | |
| BAG1-TR10 | TR10X2 | 24 | 8 | 1800 | 12,82 € |
| BAG1-TR12 | TR12X3 | 28 | 8 | 2096 | 23,57 € |
| BAG1-TR16 | TR16X4 | 34 | 11 | 3840 | 18,44 € |
| BAG1-TR18 | TR18X4 | 36 | 13 | 5216 | 18,66 € |
| BAG1-TR20 | TR20X4 | 45 | 15 | 6784 | 19,49 € |
| BAG1-TR24 | TR24X5 | 45 | 15 | 8096 | 32,74 € |
| Left handed thread | | | | | |
| BAG1-TR10/LH | TR10X2 | 24 | 8 | 1800 | 14,75 € |
| BAG1-TR12/LH | TR12X3 | 28 | 8 | 2096 | 27,08 € |
| BAG1-TR16/LH | TR16X4 | 34 | 11 | 3840 | 21,21 € |
| BAG1-TR18/LH | TR18X4 | 36 | 13 | 5216 | 21,48 € |
| BAG1-TR20/LH | TR20X4 | 45 | 15 | 6784 | 22,38 € |
| BAG1-TR24/LH | TR24X5 | 45 | 15 | 8096 | 37,66 € |

Dimensions in mm

Altri prodotti...



CFF

Testa a snodo femmina DIN ISO12240-4, Acciaio / bronzo



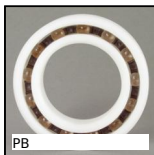
AZY_SS

Antivibrante elastico cilindrico inox, Inox



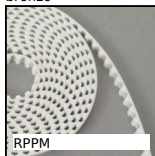
G0

Ingranaggio dritto acciaio, Acciaio 20NCD2



PB

Cuscinetto in plastica, Plastica - materiale sfere : vetro



RPPM

Cinghia aperta al metro tipo RPP, RPP5 Poliuretano armatura in acciaio



PSG25

Ingranaggio dritto di precisione, Acciaio 35NCD6 pretrattato



SRG

Chiusura a leva regolabile, Corsa da 78mm a 90mm



APB_T

Perno di fissaggio per morsetti, Maschiato



UCP_SS

Cuscinetto ritto tutto inox, Inox



BKGS

Giunto senza gioco Gerwah®, da 1.2 a 450Nm



GPLso

Scovolo, seta



MHQMEP

Manovella ad impugnatura girevole, Alesaggio quadrato

Prodotti correlati



LFM

Vite trapezoidale acciaio, Acciaio semiduro - 1 filetto