

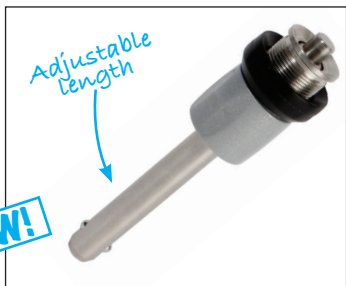
# Adjustable locking pin



## BAB

## Locking length adjustable

- **Self locking**
- For joining two pieces or to ensure a solid contact against a corresponding support
- Manually adjustable locking length by use of a nut/counter-nut
- Material :
  - Shaft: hardened steel 1.4542
  - Spring: stainless steel
  - Adjusting nut: Silver thermoplastic
  - Counter nut: Black thermoplastic
  - Working temp range: -30°C to 80°C
- Compatible with H11 bores

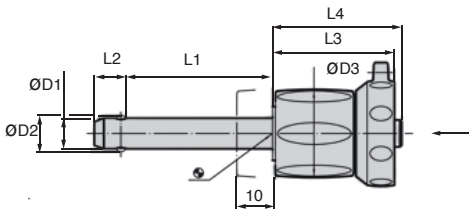
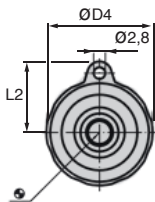
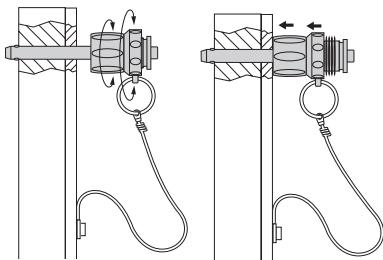


### Advantages

- Corrosion free
- Wide working load
- Excellent wear resistance

### Accessory

- Retaining cable CDR



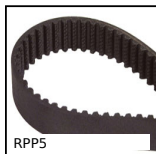
## DISCOUNTS

Qty	1+	6+	10+	25+
Disc.	List	-5%	-10%	On request

Part number	ØD1	L1	ØD2	ØD3	ØD4	L2	L3	L4	L5	Double shear resistance (kN min)	Weight (g)	Price each 1 to 5
BAB5-0-10	5	0-10	5.5	17.6	23.6	6.0	25.7	26.2	15.9	24	24	40,53 €
BAB5-5-15	5	0-15	5.5	17.6	23.6	6.0	25.7	26.2	15.9	24	25	40,53 €
BAB5-10-20	5	10-20	5.5	17.6	23.6	6.0	25.7	26.2	15.9	24	26	40,53 €
BAB6-15-25	5	15-25	5.5	17.6	23.6	6.0	25.7	26.2	15.9	24	27	40,70 €
BAB5-20-30	5	20-30	5.5	17.6	23.6	6.0	25.7	26.2	15.9	24	27	41,77 €
BAB6-0-10	6	0-10	7.0	17.6	23.6	7.0	25.7	26.2	15.9	35	25	40,70 €
BAB6-5-15	6	5-15	7.0	17.6	23.6	7.0	25.7	26.2	15.9	35	26	40,70 €
BAB6-10-20	6	10-20	7.0	17.6	23.6	7.0	25.7	26.2	15.9	35	27	40,70 €
BAB6-15-25	6	15-25	7.0	17.6	23.6	7.0	25.7	26.2	15.9	35	28	40,70 €
BAB6-20-30	6	20-30	7.0	17.6	23.6	7.0	25.7	26.2	15.9	35	29	43,02 €
BAB6-25-35	6	25-35	7.0	17.6	23.6	7.0	25.7	26.2	15.9	35	30	43,02 €
BAB6-30-40	6	30-40	7.0	17.6	23.6	7.0	25.7	26.2	15.9	35	31	43,02 €
BAB6-35-45	6	35-45	7.0	17.6	23.6	7.0	25.7	26.2	15.9	35	32	43,02 €
BAB6-40-50	6	40-50	7.0	17.6	23.6	7.0	25.7	26.2	15.9	63	33	43,02 €
BAB8-10-20	8	10-20	9.6	23.0	27.6	8.2	31.2	33.1	18.0	63	57	43,19 €
BAB8-15-25	8	15-25	9.6	23.0	27.6	8.2	31.2	33.1	18.0	63	58	43,19 €
BAB8-20-30	8	20-30	9.6	23.0	27.6	8.2	31.2	33.1	18.0	63	60	45,78 €
BAB8-25-35	8	25-35	9.6	23.0	27.6	8.2	31.2	33.1	18.0	63	62	45,78 €
BAB8-30-40	8	30-40	9.6	23.0	27.6	8.2	31.2	33.1	18.0	63	64	45,78 €
BAB8-35-45	8	35-45	9.6	23.0	27.6	8.2	31.2	33.1	18.0	63	66	45,78 €
BAB8-40-50	8	40-50	9.6	23.0	27.6	8.2	31.2	33.1	18.0	63	68	45,78 €
BAB10-10-20	10	10-20	12.0	23.0	27.6	9.6	31.2	33.1	18.0	100	63	54,70 €
BAB10-15-25	10	15-25	12.0	23.0	27.6	9.6	31.2	33.1	18.0	100	66	54,70 €
BAB10-20-30	10	20-30	12.0	23.0	27.6	9.6	31.2	33.1	18.0	100	69	56,34 €
BAB10-25-35	10	25-35	12.0	23.0	27.6	9.6	31.2	33.1	18.0	100	72	56,34 €
BAB10-30-40	10	30-40	12.0	23.0	27.6	9.6	31.2	33.1	18.0	100	75	56,34 €
BAB10-35-45	10	35-45	12.0	23.0	27.6	9.6	31.2	33.1	18.0	100	78	56,34 €
BAB10-40-50	10	40-50	12.0	23.0	27.6	9.6	31.2	33.1	18.0	100	81	56,34 €
BAB10-50-60	10	50-60	12.0	23.0	27.6	9.6	31.2	33.1	18.0	100	87	58,16 €
BAB12-15-25	12	15-25	14.5	29.0	34.6	10.6	36.7	39.5	21.8	144	123	57,28 €
BAB12-20-30	12	20-30	14.5	29.0	34.6	10.6	36.7	39.5	21.8	144	127	58,73 €
BAB12-25-35	12	25-35	14.5	29.0	34.6	10.6	36.7	39.5	21.8	144	131	58,73 €
BAB12-30-40	12	30-40	14.5	29.0	34.6	10.6	36.7	39.5	21.8	144	135	58,73 €
BAB12-35-45	12	35-45	14.5	29.0	34.6	10.6	36.7	39.5	21.8	144	140	58,73 €
BAB12-40-50	12	40-50	14.5	29.0	34.6	10.6	36.7	39.5	21.8	144	144	58,73 €
BAB12-50-60	12	50-60	14.5	29.0	34.6	10.6	36.7	39.5	21.8	144	152	60,54 €
BAB12-60-70	12	60-70	14.5	29.0	34.6	10.6	36.7	39.5	21.8	144	161	60,54 €
BAB12-70-80	12	70-80	14.5	29.0	34.6	10.6	36.7	39.5	21.8	144	169	62,29 €
BAB16-20-30	16	20-30	19.0	29.0	34.6	14.0	36.7	39.5	21.8	257	159	83,84 €
BAB16-25-35	16	25-35	19.0	29.0	34.6	14.0	36.7	39.7	21.8	257	166	83,84 €
BAB16-30-40	16	30-40	19.0	29.0	34.6	14.0	36.7	39.5	21.8	257	174	83,84 €
BAB16-35-45	16	35-45	19.0	29.0	34.6	14.0	36.7	39.5	21.8	257	182	83,84 €
BAB16-40-50	16	40-50	19.0	29.0	34.6	14.0	36.7	39.5	21.8	257	189	83,84 €
BAB16-50-60	16	50-60	19.0	29.0	34.6	14.0	36.7	39.5	21.8	257	205	88,52 €
BAB16-60-70	16	60-70	19.0	29.0	34.6	14.0	36.7	39.5	21.8	257	220	88,52 €
BAB16-70-80	16	70-80	19.0	29.0	34.6	14.0	36.7	39.5	21.8	257	235	92,45 €

Shear resistance acc DIN50141

## Altri prodotti...



RPP5

Cinghia di trasmissione RPP, RPP5



UFX

Giunto elastico Uneflex®, economica



GLB

Piccolo volano a 6 alette, Tecnopolimero - Ottone



FIRSTDC1Q60

Variatore di velocità 10A, 10 A



MPB

Distanziatore esagonale, Ottone



PTA50

Piede snodato con base stampata Ø50, Ø 50



GP75

Chiusura a leva molla a trazione compensata, Standard (GP75)



D-PAR\_SS

Piedino antivibrante parabolico, inox



BRI

Accessori per pannello, Blocco di fissaggio



PSG15

Ingranaggio dritto di precisione, Acciaio 35NCD6 pretrattato



SSB

Ingranaggio conico inox, 1:1



DOMI50

Slitta di regolazione Domino 50, Slitta DOMILINE 50 con contatore e ...

## Prodotti correlati



CDR

Per perno autobloccante, Cavo di ritegno



BABreceptacle

Perno autobloccante, Bussola di innesto