

- Allows ball pins to be positioned quickly and securely
- Material:  
Stainless steel 1.4305 (303)

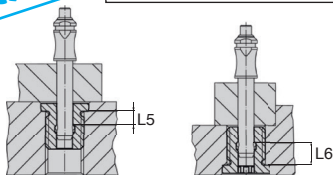
### Advantages

- Precision collar means optimised centring
- Simple and safe assembly
- Suitable for use in different materials
- Suitable for use in thin walled materials
- Corrosion resistant
- Wear resistant
- Can be mounted on either side

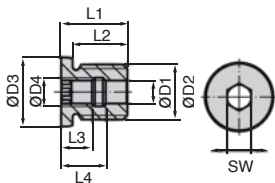
stainless steel



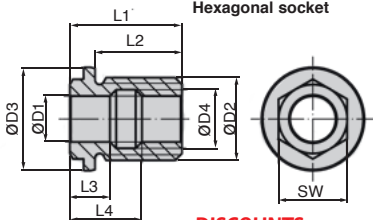
NEW!



Hexagonal head



Hexagonal socket



### DISCOUNTS

Qty	1+	6+	10+	25+
Disc.	List -5%	List -10%	On request	

Part number	$d_1$ H11	ØD2	ØD3	ØD4	L1	L2	L3	L4	L5	L6	SW	Weight (g)	Price each 1 to 5
<b>Hexagonal head</b>													
BAB5-M12	5	M12	18	6,0	19	15	9,0	13,0	5,1	9,0	5	15	16,57 €
BAB6-M12	6	M12	18	7,5	19	15	9,4	13,0	5,6	8,8	6	13	16,57 €
BAB8-M16	8	M16	22	10,0	25	20	12,0	17,0	7,3	11,7	8	29	24,43 €
BAB10-M24	10	M24	30	12,5	29	24	13,5	19,5	8,9	14,1	10	75	28,36 €
BAB12-M24	12	M24	30	15,0	29	24	14,0	20,0	9,6	14,4	12	66	29,31 €
<b>Hexagonal socket</b>													
BAB16-M30	16	M30	36	19,5	39	29	15,5	23,5	6,1	12,8	24	124	32,27 €
BAB20-M36	20	M36	45	25,5	49	38	17,5	31,5	7,7	19,3	30	208	53,75 €

## Altri prodotti...



Kit di raccordo, Kit di raccordo XZ



Cinghia di posizionamento AT, AT10 Poliuretano armatura in acciaio



Piccolo volano a 6 alette, Tecnopolimero - Inox



Ingranaggio dritto acciaio, Acciaio 20NCD2



Bloccetto di fissaggio, Aggiunta e fissaggio di pannelli



Anello di sollevamento, Gancio universale ad avvitare



Riduttore coassiale a treni paralleli, da 0.90 a 2.80 Nm - a treni p...



Ingranaggio conico in plastica stampata, 1:1



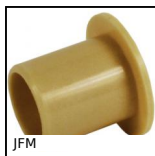
Ingranaggio elicoidale ad assi paralleli, 1:1



Ventosa, Gomma naturale



Morsetto incrociato, Montaggio e



Cuscinetto a collare, Polimero universale

## Prodotti correlati



Ball lock pins lockable, Stainless steel



Ball lock pins lockable, Stainless steel