

Clamping pin for blind hole



BABTBSS

Stainless steel 303

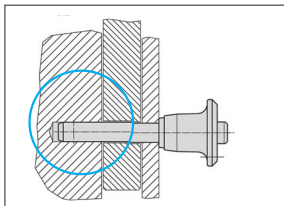
- **Clamp lock pins with button handle**
- For rapid fastening, locking, adjusting, replacing, and securing in blind holes (H11) without additional locating bushings
- Quick and easy to release for connections which are made repeatedly
- Materials :
 - Pin stainless steel 303
 - Handle Black aluminium
- Working T°: -30°C to +150°C



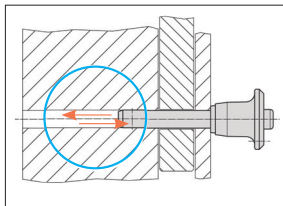
Operation

Clamp lock pins can be used in blind holes. The holding forces achieved in an H11 borehole depends on the material of the counterpart:

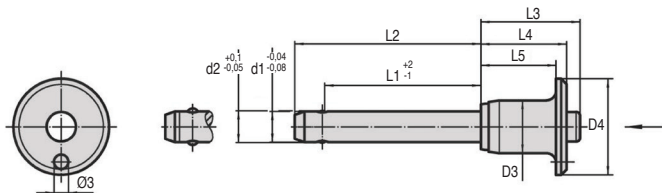
- Steel, hardened: min. 30 N
- Steel, soft: min. 120 N
- Stainless steel, soft: min. 120 N
- Aluminium alloy: min. 250 N



Ideal for blind hole



Locking without predetermined position. No special machining required.



DISCOUNTS

| | | | |
|-------|------|-----|------------|
| Qty | 1+ | 6+ | 10+ |
| Disc. | List | -5% | On request |

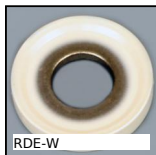
| Part number | ØD1 | L | ØD2 | ØD3 | ØD4 | L2 | L3 | L4 | L5 | Shearing resistance two-shear (kN) | Weight (g) | Price each 1 à 5 |
|-----------------|-----|-----|------|------|-----|-------|------|------|------|------------------------------------|------------|------------------|
| BAB6-10/TB/SS | 6 | 10 | 6,2 | 11,3 | 20 | 17,4 | 20,7 | 17,6 | 14,6 | 21 | 13 | |
| BAB6-20/TB/SS | 6 | 20 | 6,2 | 11,3 | 20 | 27,4 | 20,7 | 17,6 | 14,6 | 21 | 15 | |
| BAB6-40/TB/SS | 6 | 40 | 6,2 | 11,3 | 20 | 47,4 | 20,7 | 17,6 | 14,6 | 21 | 19 | |
| BAB6-60/TB/SS | 6 | 60 | 6,2 | 11,3 | 20 | 67,4 | 20,7 | 17,6 | 14,6 | 21 | 23 | |
| BAB8-10/TB/SS | 8 | 10 | 8,3 | 14,1 | 25 | 18,6 | 27,3 | 22,6 | 18,6 | 38 | 25 | |
| BAB8-20/TB/SS | 8 | 20 | 8,3 | 14,1 | 25 | 28,6 | 27,3 | 22,6 | 18,6 | 38 | 29 | |
| BAB8-40/TB/SS | 8 | 40 | 8,3 | 14,1 | 25 | 48,6 | 27,3 | 22,6 | 18,6 | 38 | 36 | |
| BAB8-60/TB/SS | 8 | 60 | 8,3 | 14,1 | 25 | 68,6 | 27,3 | 22,6 | 18,6 | 38 | 43 | |
| BAB8-80/TB/SS | 8 | 80 | 8,3 | 14,1 | 25 | 88,6 | 27,3 | 22,6 | 18,6 | 38 | 51 | |
| BAB10-20/TB/SS | 10 | 20 | 10,3 | 14,1 | 25 | 30,0 | 27,3 | 22,6 | 18,6 | 60 | 35 | |
| BAB10-40/TB/SS | 10 | 40 | 10,3 | 14,1 | 25 | 50,0 | 27,3 | 22,6 | 18,6 | 60 | 47 | |
| BAB10-60/TB/SS | 10 | 60 | 10,3 | 14,1 | 25 | 70,0 | 27,3 | 22,6 | 18,6 | 60 | 59 | |
| BAB10-80/TB/SS | 10 | 80 | 10,3 | 14,1 | 25 | 90,0 | 27,3 | 22,6 | 18,6 | 60 | 70 | |
| BAB10-100/TB/SS | 10 | 100 | 10,3 | 14,1 | 25 | 110,0 | 27,3 | 22,6 | 18,6 | 60 | 82 | |
| BAB12-20/TB/SS | 12 | 20 | 12,3 | 17,7 | 35 | 31,0 | 33,2 | 27,3 | 22,3 | 87 | 66 | |
| BAB12-40/TB/SS | 12 | 40 | 12,3 | 17,7 | 35 | 51,0 | 33,2 | 27,3 | 22,3 | 87 | 82 | |
| BAB12-60/TB/SS | 12 | 60 | 12,3 | 17,7 | 35 | 71,0 | 33,2 | 27,3 | 22,3 | 87 | 100 | |
| BAB12-80/TB/SS | 12 | 80 | 12,3 | 17,7 | 35 | 91,0 | 33,2 | 27,3 | 22,3 | 87 | 117 | |
| BAB12-100/TB/SS | 12 | 100 | 12,3 | 17,7 | 35 | 111,0 | 33,2 | 27,3 | 22,3 | 87 | 134 | |
| BAB16-30/TB/SS | 16 | 30 | 16,5 | 23,4 | 40 | 44,4 | 42,2 | 34,5 | 28,5 | 155 | 150 | |
| BAB16-60/TB/SS | 16 | 60 | 16,5 | 23,4 | 40 | 74,4 | 42,2 | 34,5 | 28,5 | 155 | 196 | |
| BAB16-90/TB/SS | 16 | 90 | 16,5 | 23,4 | 40 | 104,4 | 42,2 | 34,5 | 28,5 | 155 | 242 | |
| BAB16-120/TB/SS | 16 | 120 | 16,5 | 23,4 | 40 | 134,4 | 42,2 | 34,5 | 28,5 | 155 | 290 | |

Dimensions in mm

Altri prodotti...



DOMI30
Accessori di collegamento, Piastra



RDE-W
Rondella di tenuta Hygienic Usit®, Inox - EPDM bianco



OPFL_OPPM
Accessorio per indicatori, Pomello di manovra



SSG1
Ingranaggio dritto Inox, Inox 304L



RJA11_27
Guarnizione in gomma, Diverso dall'aggancio



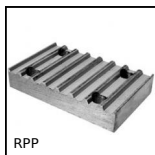
HTD14M_85
Puleggia dentata di trasmissione tipo HTD, HTD14 Acciaio



VAP
Magnete con foro centrale, Con foro centrale



PRF_ART
Cerniere e giunti, Con maniglia di serraggio



RPP
Piastra di giunzione per cinghia RPP, RPP5



PNA
Giunto elastico PERIFLEX®, Giunto completo



BPF1ss
Supporto a flangia ovale a carico leggero inox, Inox



AT10courroie
Cinghia di posizionamento AT, AT10 Poliuretano armatura in acciaio

Prodotti correlati