

- **Self locking**
- **Materials**
 - Shaft: Stainless steel 1.4542, precipitation hardened with scratch resistant coating
 - Spring: Stainless steel
 - Handle: Black aluminium (RAL9005)
 - Release button: Black stainless steel
- Working temperature range: -30°C to +150°C

stainless steel

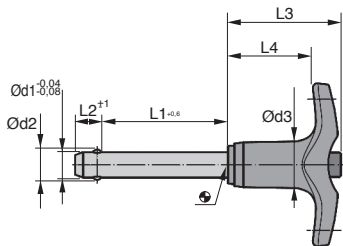
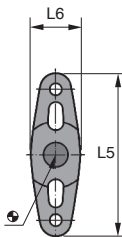


Advantages

- Push to release
- Easy and quick method of attaching, blocking, adjusting etc... Quickly and easily unlocked for frequently repeated operations.
- Corrosion resistant
- Highly resistant, anti-wear, suitable for heavy duty applications
- Can be used with the **CDR** retaining cable

Info.

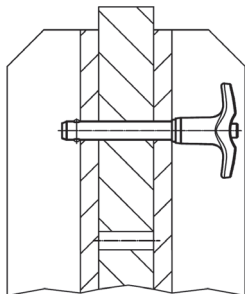
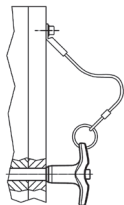
- Shear resistance conforms to DIN 50141



DISCOUNTS

| | | | | |
|-------|------|-----|------|------------|
| Qty. | 1+ | 6+ | 10+ | 25+ |
| Disc. | List | -5% | -10% | On request |

| Part number | Ød1 | L1 | Ød2 | Ød3 | L2 | L3 | L4 | L5 | L6 | Corresponding bore H11 | Double shear resistance kN min. | Weight (g) | Price each 1 to 5 |
|-------------|-----|----|-----|------|-----|------|------|------|------|------------------------|---------------------------------|------------|-------------------|
| BAB5-10/T | 5 | 10 | 5,5 | 11,8 | 6,0 | 31,6 | 24,1 | 45,2 | 12,7 | 5 | 24 | 19 | 30,54 € |
| BAB5-15/T | 5 | 15 | 5,5 | 11,8 | 6,0 | 31,6 | 24,1 | 45,2 | 12,7 | 5 | 24 | 20 | 30,54 € |
| BAB5-20/T | 5 | 20 | 5,5 | 11,8 | 6,0 | 31,6 | 24,1 | 45,2 | 12,7 | 5 | 24 | 20 | 30,54 € |
| BAB5-25/T | 5 | 25 | 5,5 | 11,8 | 6,0 | 31,6 | 24,1 | 45,2 | 12,7 | 5 | 24 | 21 | 30,54 € |
| BAB5-30/T | 5 | 30 | 5,5 | 11,8 | 6,0 | 31,6 | 24,1 | 45,2 | 12,7 | 5 | 24 | 22 | 32,44 € |
| BAB6-10/T | 6 | 10 | 7,0 | 11,8 | 7,0 | 31,6 | 24,1 | 45,2 | 12,7 | 6 | 35 | 20 | 30,54 € |
| BAB6-15/T | 6 | 15 | 7,0 | 11,8 | 7,0 | 31,6 | 24,1 | 45,2 | 12,7 | 6 | 35 | 21 | 30,54 € |
| BAB6-20/T | 6 | 20 | 7,0 | 11,8 | 7,0 | 31,6 | 24,1 | 45,2 | 12,7 | 6 | 35 | 22 | 30,54 € |
| BAB6-25/T | 6 | 25 | 7,0 | 11,8 | 7,0 | 31,6 | 24,1 | 45,2 | 12,7 | 6 | 35 | 23 | 30,54 € |
| BAB6-30/T | 6 | 30 | 7,0 | 11,8 | 7,0 | 31,6 | 24,1 | 45,2 | 12,7 | 6 | 35 | 24 | 32,44 € |



DISCOUNTS

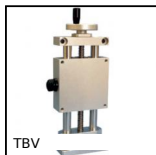
| | | | | |
|-------|------|-----|------|------------|
| Qty. | 1+ | 6+ | 10+ | 25+ |
| Disc. | List | -5% | -10% | On request |

| Part number | Ød1 | L1 | Ød2 | Ød3 | L2 | L3 | L4 | L5 | L6 | Corresponding bore H11 | Double shear resistance kN min. | Weight (g) | Price each 1 to 5 |
|-------------|-----|----|------|------|------|------|------|------|------|------------------------|---------------------------------|------------|-------------------|
| BAB6-35/T | 6 | 35 | 7,0 | 11,8 | 7,0 | 31,6 | 24,1 | 45,2 | 12,7 | 6 | 35 | 25 | 32,44 € |
| BAB6-40/T | 6 | 40 | 7,0 | 11,8 | 7,0 | 31,6 | 24,1 | 45,2 | 12,7 | 6 | 35 | 26 | 32,44 € |
| BAB6-45/T | 6 | 45 | 7,0 | 11,8 | 7,0 | 31,6 | 24,1 | 45,2 | 12,7 | 6 | 35 | 27 | 32,44 € |
| BAB6-50/T | 6 | 50 | 7,0 | 11,8 | 7,0 | 31,6 | 24,1 | 45,2 | 12,7 | 6 | 35 | 28 | 32,44 € |
| BAB8-20/T | 8 | 20 | 9,5 | 14,7 | 8,2 | 35,8 | 26,9 | 51,5 | 15,8 | 8 | 63 | 37 | 33,71 € |
| BAB8-25/T | 8 | 25 | 9,5 | 14,7 | 8,2 | 35,8 | 26,9 | 51,5 | 15,8 | 8 | 63 | 39 | 33,43 € |
| BAB8-30/T | 8 | 30 | 9,5 | 14,7 | 8,2 | 35,8 | 26,9 | 51,5 | 15,8 | 8 | 63 | 41 | 35,55 € |
| BAB8-35/T | 8 | 35 | 9,5 | 14,7 | 8,2 | 35,8 | 26,9 | 51,5 | 15,8 | 8 | 63 | 43 | 35,55 € |
| BAB8-40/T | 8 | 40 | 9,5 | 14,7 | 8,2 | 35,8 | 26,9 | 51,5 | 15,8 | 8 | 63 | 44 | 35,55 € |
| BAB8-45/T | 8 | 45 | 9,5 | 14,7 | 8,2 | 35,8 | 26,9 | 51,5 | 15,8 | 8 | 63 | 46 | 35,55 € |
| BAB8-50/T | 8 | 50 | 9,5 | 14,7 | 8,2 | 35,8 | 26,9 | 51,5 | 15,8 | 8 | 63 | 48 | 35,55 € |
| BAB10-20/T | 10 | 20 | 12,0 | 14,7 | 9,6 | 35,8 | 26,9 | 51,5 | 15,8 | 10 | 100 | 44 | 49,31 € |
| BAB10-25/T | 10 | 25 | 12,0 | 14,7 | 9,6 | 35,8 | 26,9 | 51,5 | 15,8 | 10 | 100 | 47 | 49,31 € |
| BAB10-30/T | 10 | 30 | 12,0 | 14,7 | 9,6 | 35,8 | 26,9 | 51,5 | 15,8 | 10 | 100 | 49 | 51,90 € |
| BAB10-35/T | 10 | 35 | 12,0 | 14,7 | 9,6 | 35,8 | 26,9 | 51,5 | 15,8 | 10 | 100 | 52 | 51,90 € |
| BAB10-40/T | 10 | 40 | 12,0 | 14,7 | 9,6 | 35,8 | 26,9 | 51,5 | 15,8 | 10 | 100 | 55 | 51,90 € |
| BAB10-45/T | 10 | 45 | 12,0 | 14,7 | 9,6 | 35,8 | 26,9 | 51,5 | 15,8 | 10 | 100 | 58 | 51,90 € |
| BAB10-50/T | 10 | 50 | 12,0 | 14,7 | 9,6 | 35,8 | 26,9 | 51,5 | 15,8 | 10 | 100 | 61 | 51,90 € |
| BAB10-60/T | 10 | 60 | 12,0 | 14,7 | 9,6 | 35,8 | 26,9 | 51,5 | 15,8 | 10 | 100 | 67 | 54,42 € |
| BAB12-25/T | 12 | 25 | 14,5 | 18,2 | 10,6 | 35,1 | 25,3 | 59,1 | 20,2 | 12 | 144 | 73 | 50,31 € |
| BAB12-30/T | 12 | 30 | 14,5 | 18,2 | 10,6 | 35,1 | 25,3 | 59,1 | 20,2 | 12 | 144 | 77 | 52,88 € |
| BAB12-35/T | 12 | 35 | 14,5 | 18,2 | 10,6 | 35,1 | 25,3 | 59,1 | 20,2 | 12 | 144 | 81 | 52,88 € |
| BAB12-40/T | 12 | 40 | 14,5 | 18,2 | 10,6 | 35,1 | 25,3 | 59,1 | 20,2 | 12 | 144 | 86 | 52,88 € |
| BAB12-45/T | 12 | 45 | 14,5 | 18,2 | 10,6 | 35,1 | 25,3 | 59,1 | 20,2 | 12 | 144 | 90 | 52,88 € |
| BAB12-50/T | 12 | 50 | 14,5 | 18,2 | 10,6 | 35,1 | 25,3 | 59,1 | 20,2 | 12 | 144 | 94 | 52,88 € |
| BAB12-60/T | 12 | 60 | 14,5 | 18,2 | 10,6 | 35,1 | 25,3 | 59,1 | 20,2 | 12 | 144 | 103 | 55,33 € |
| BAB12-70/T | 12 | 70 | 14,5 | 18,2 | 10,6 | 35,1 | 25,3 | 59,1 | 20,2 | 12 | 144 | 111 | 55,33 € |
| BAB12-80/T | 12 | 80 | 14,5 | 18,2 | 10,6 | 35,1 | 25,3 | 59,1 | 20,2 | 12 | 144 | 119 | 57,76 € |

Altri prodotti...



BAG0
Anello di bloccaggio,
Acciaio



TBV
Tavola di
posizionamento
verticale manuale,
20kg



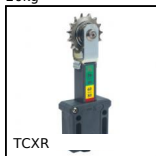
PM3
Coppia ruota e vite
senza fine, Bronzo



TSD
Tavola di
posizionamento a
passo inverso
manuale, 2kg



DILC
Indexing plunger with
cam, with cam



TCXR
Tenditore per catena
automatico, Con
pignone inox



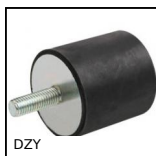
DER90
Motore inox AC
asincrono da 1,1 a
1,5kW, 1.1 a 1.5kW



SSB
Ingranaggio conico
inox, 1:1



APB_F
Perno di fissaggio per
morsetti, Filettato



DZY
Piedino antivibrante
cilindrico, Acciaio



WW10
Guida Drylin® W,
Carrello



PHT
Maniglia a ponte, Fino
a 250°C

Prodotti correlati



BABreceptacle
Perno autobloccante,
Bussola di innesto



CDR
Per perno
autobloccante, Cavo
di ritegno



AFA
Perno di fissaggio, con
anello



BABtss
Perno autobloccante
inox 303, Inox 303