

Mounting collar for ball pin

BABFC
BABFO

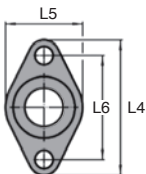
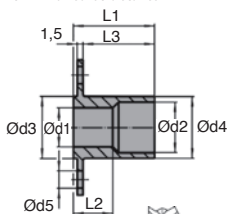
With a round or oval flange

- For use on thin sheet metal
- These collars offer a quick and securing method of mounting ball pins
- For the construction of boxes or other containers
- Material: 303, stainless steel

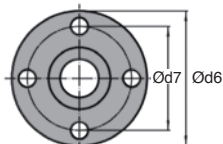


Fonctionnement

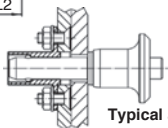
- The large contact surface area ensures that all the force is spread evenly over thin walled structures



BABFO :
Oval flange



BABFC :
Cylindrical flange



Typical application

DISCOUNTS

Qty	1+	6+	10+	25+
Disc.	List	-5%	-10%	On request

With cylindrical flange

Part number	Ød1	Ød2	Ød3		Ød4	Ød5	Ød6	Ød7	L1	L2	L3	Weight (g)	Price each 1 to 5
			-0,05	-0,1									
BAB5-8/FC/SS	5	8	10	9,9	3,4	25	19	12	5,4	9,5	9	19,01 €	
BAB6-8/FC/SS	6	8	10	9,9	3,4	25	19	13	5,3	10,5	9	19,01 €	
BAB8-10/FC/SS	8	10	12	11,9	4,5	30	22	19	10,3	16,5	14	21,15 €	
BAB10-13/FC/SS	10	13	16	15,9	4,5	35	27	21	10,2	18,5	24	23,38 €	
BAB12-15/FC/SS	12	15	19	18,9	4,5	40	30	27	15,2	24,5	41	26,60 €	
BAB16-20/FC/SS	16	20	24	23,9	5,5	50	40	30	15,3	27,5	63	31,25 €	

With oval flange

Part number	Ød1	Ød2	Ød3		Ød4	Ød5	L1	L2	L3	L4	L5	L6	Weight (g)	Price each 1 to 5
			-0,05	-0,1										
BAB5-8/FO/SS	5	8	10	9,9	3,4	12	5,4	9,5	25	15	19	6	21,95 €	
BAB6-8/FO/SS	6	8	10	9,9	3,4	13	5,3	10,5	25	15	19	6	21,95 €	
BAB8-10/FO/SS	8	10	12	11,9	4,5	19	10,3	16,5	30	18	22	10	24,58 €	
BAB10-13/FO/SS	10	13	16	15,9	4,5	21	10,2	18,5	35	20	27	19	27,19 €	
BAB12-15/FO/SS	12	15	19	18,9	4,5	27	15,2	24,5	40	24	30	34	30,41 €	
BAB16-20/FO/SS	16	20	24	23,9	5,5	30	15,3	27,5	50	30	40	52	33,65 €	

Dimensions in mm

Altri prodotti...



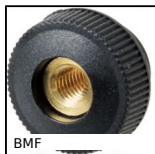
DCA

Ventosa, nitrile



T2,5-BAR

Barra dentata, T2.5



BMF

Manopola, Zigrinata -
Passante



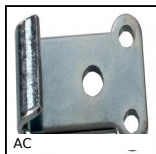
CHC

Vite a testa cava
esagonale CHC,
Acciaio classe 12.19



AT10-32ECO

Puleggia dentata di
posizionamento tipo
AT, Serie economica -
AT10 a...



AC

Piastrina di riscontro,
15mm



BLOC

Accessori per porte,
Arresto per porta



CHB

Feet, For CHB gearbox



VQT

Chiusura ¼ di giro per
bloccaggio , Manopola
plastica o inox



MDB_MTB

Ingranaggio conico in
plastica stampata, 2:1



PSG05S

Ingranaggio dritto di
precisione, Inox 316



VAP

Magnete con foro
centrale, Con foro
centrale

Prodotti correlati



BAB

Perno autobloccante a
sfere, Inox temprato



BABFCFO

Perno autobloccante,
Boccole di fissaggio
con flangia ovale



BABss

Perno autobloccante
inox 303, Inox 303



BABV

Ball lock pins lockable
, Stainless steel