

# Female eyebolt **high resistance**



## ADLMHR

## High strenght alloy steel

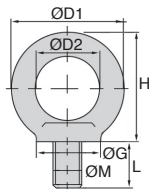
- ISO thread
- Material:  
High strenght alloy steel  
grade 80 red painted

### Stamping

- ØM, CE, WLL, manufacturer

### Info

- The Breaking load is calculated  
by multiplying the WLL by a safety  
factor of 4"



### DISCOUNTS

Qty	1+	6+	20+	30+
Disc.	List	-10%	-20%	On request

Part number	ØM	WLL (kg)	ØD1	ØD2	H	L	ØG	Weight (g)	Price each 1 to 5
ADL-8M/HR	M8	800	45,0	25,0	46,0	13,0	25,0	110	
ADL-10M/HR	M10	1000	45,0	24,5	46,5	17,0	25,0	110	
ADL-12M/HR	M12	1600	54,0	30,0	55,0	20,0	30,0	180	
ADL-14M/HR	M14	3000	63,0	34,5	63,0	21,0	35,0	280	
ADL-16M/HR	M16	4000	63,0	35,0	64,0	27,0	35,0	300	
ADL-18M/HR	M18	5000	72,0	40,0	72,0	30,0	40,0	450	
ADL-20M/HR	M20	6000	72,3	39,7	71,8	30,2	40,3	475	
ADL-22M/HR	M22	7000	90,3	49,8	91,1	34,3	50,0	880	
ADL-24M/HR	M24	8000	90,0	50,0	90,4	38,0	50,2	905	

\*Dimensions in mm



# Female eyebolt **high resistance**

High strenght alloy steel

**ADLHR**

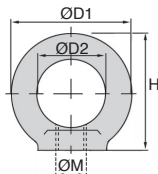
- ISO thread
- Material:  
High strenght alloy steel grade 80  
red painted

## Stamping

- ØM, CE, WLL, manufacturer

## Info

- The Breaking load is calculated by multiplying the WLL by a safety factor of 4"



## DISCOUNTS

Qty	1+	6+	20+	30+
Disc.	List	-10%	-20%	On request

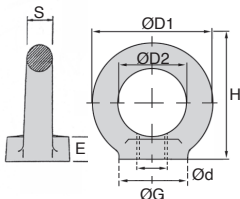
Part number	ØM	WLL (kg)	ØD1	ØD2	H	Weight (g)	Price each 1 to 5
ADL-8F/HR	M8	800	45,5	24,9	46,0	100	
ADL-10F/HR	M10	1000	45,4	24,7	46,5	100	
ADL-12F/HR	M12	1600	54,2	29,9	54,4	165	
ADL-14F/HR	M14	3000	63,3	34,9	64,0	250	
ADL-16F/HR	M16	4000	63,2	35,0	63,3	245	
ADL-18F/HR	M18	5000	72,1	39,7	73,1	380	
ADL-20F/HR	M20	6000	72,0	39,9	71,7	365	
ADL-22F/HR	M22	7000	90,4	49,9	91,8	760	
ADL-24F/HR	M24	8000	90,2	50,0	92,0	740	

\*Dimensions in mm

- **Lifting eye bolt**
- ISO thread
- **Material:**  
Black stamped steel  
Stainless steel 316

### Mounting

- Chamfer the hole into which the bolt will screw or use washers to ensure correct seating.
- Before assembly, clean the threads
- Screw lifting eye in fully
- The load should be lifted in the direction of the thread, +/- 20° and the pulling force should be along the axial plane of the eye.
- The use of these lifting eyes at an angle greater than 45° is not permitted.
- When the load to be lifted is aluminium, avoid leaving the eyes screwed in to avoid possible corrosion.



Steel eye bolt

stainless steel



Stainless steel eye bolt

### Info.

SWL: safe working load

The Safe Working Load is calculated by dividing the breaking strength by a factor of safety of 5.

### DISCOUNTS

Qty	1+	6+	20+	50+
Disc.	List	-10%	-20%	On request

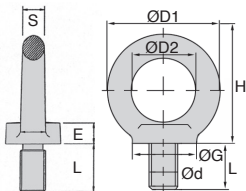
Part number	Ød	H	ØD1	ØD2	ØG	E	ØS	SWL (kg)	SWL at 45° (kg)	Weight (kg)	Price each 1 to 5
<b>Steel eye bolt</b>											
ADL-6F	M6	36	36	20	22	9	9	90	60	0,060	✓ 1,93 €
ADL-8F	M8	36	36	20	21	11	9	140	95	0,060	✓ 1,96 €
ADL-10F	M10	45	45	25	26	10	10	230	170	0,100	✓ 2,31 €
ADL-12F	M12	52	55	29	31	11	12	340	240	0,160	✓ 3,14 €
ADL-16F	M16	62	63	34	34	15	14	700	500	0,240	✓ 4,40 €
ADL-20F	M20	71	72	39	40	17	16	1200	830	0,360	✓ 6,89 €
ADL-24F	M24	89	90	48	49	22	21	1800	1270	0,715	- 12,21 €
ADL-30F	M30	109	108	60	65	25	24	3200	2300	1,400	- 23,86 €
ADL-36F	M36	137	127	69	81	38	31	4600	3300	2,300	- 41,40 €
ADL-42F	M42	147	144	80	85	35	32	6300	4500	3,500	- 81,17 €
ADL-48F	M48	185	170	88	102	45	41	8600	6100	5,670	- 130,90 €
<b>Stainless steel eye bolt</b>											
ADL-6F/SS	M6	-	35	19	20	9	9	180	-	0,055	✓ 7,01 €
ADL-8F/SS	M8	-	36	19	20	10	8	300	-	0,050	✓ 7,90 €
ADL-10F/SS	M10	-	45	24	24	11	9	500	-	0,090	✓ 13,10 €
ADL-12F/SS	M12	-	53	29	29	13	12	800	-	0,155	✓ 18,32 €
ADL-14F/SS	M14	-	54	30	30	11	12	1100	-	0,165	- 20,93 €
ADL-16F/SS	M16	-	63	34	35	15	14	1500	-	0,250	✓ 24,09 €
ADL-20F/SS	M20	-	72	40	40	15	16	2400	-	0,360	- 44,33 €
ADL-24F/SS	M24	-	90	50	50	20	20	3600	-	0,720	- 79,17 €

\*Depending on availability - Dimensions in mm

- **Lifting eye bolt**
- ISO thread
- Material:  
Black stamped steel  
Stainless steel 316

### Mounting

- Chamfer the hole into which the bolt will screw or use washers to ensure correct seating.
- Before assembly, clean the threads
- Screw lifting eye in fully
- The load should be lifted in the direction of the thread, +/- 20° and the pulling force should be along the axial plane of the eye.
- The use of these lifting eyes at an angle greater than 45° is not permitted.
- When the load to be lifted is aluminium, avoid leaving the eyes screwed in to avoid possible corrosion.



Steel eye bolt



Stainless steel eye bolt

### Info.

SWL: safe working load  
The Safe Working Load is calculated by dividing the breaking Strength by a factor of safety of 5.

### DISCOUNTS

Qty	1+	6+	20+	50+
Disc.	List -10%	-20%	On request	

Part number	Ød	L	H	ØD1	ØD2	ØG	E	ØS	SWL (kg)	SWL at 45° (kg)	Weight (kg)	Price each 1 to 5
<b>Steel eye bolt</b>												
ADL-6M	M6	13	36	36	20	20	6	8	90	60	0,060	✓ 1,96 €
ADL-8M	M8	13	38	36	20	21	7	9	140	95	0,060	✓ 2,00 €
ADL-10M	M10	16	46	45	24	26	9	10	230	170	0,110	✓ 2,43 €
ADL-12M	M12	19	56	55	29	30	12	11	340	240	0,170	✓ 2,96 €
ADL-16M	M16	28	65	64	36	35	12	14	700	500	0,290	✓ 4,62 €
ADL-20M	M20	30	74	72	40	40	14	17	1200	830	0,450	✓ 6,89 €
ADL-24M	M24	36	92	89	49	51	18	21	1800	1270	0,880	✓ 11,71 €
ADL-30M	M30	43	111	108	60	65	23	25	3200	2300	1,640	✓ 22,24 €
ADL-36M	M36	54	131	126	68	80	24	29	4600	3300	2,710	- 38,68 €
ADL-42M	M42	61	153	148	79	90	33	35	6300	4500	4,250	- 73,24 €
ADL-48M	M48	68	168	166	90	100	35	38	8600	6100	6,200	- 126,91 €
<b>Stainless steel eye bolt</b>												
ADL-6M/SS	M6	13	-	35	20	20	7	8	180	-	0,050	✓ 7,46 €
ADL-8M/SS	M8	13	-	36	20	20	6	8	300	-	0,060	✓ 7,97 €
ADL-10M/SS	M10	17	-	45	25	25	8	10	500	-	0,115	✓ 13,46 €
ADL-12M/SS	M12	20	-	54	30	30	10	12	800	-	0,190	✓ 18,70 €
ADL-14M/SS	M14	20	-	54	30	30	10	12	1100	-	0,190	✓ 21,49 €
ADL-16M/SS	M16	27	-	63	35	35	12	14	1500	-	0,280	✓ 27,19 €
ADL-20M/SS	M20	30	-	72	40	40	14	16	2400	-	0,450	- 45,38 €
ADL-24M/SS	M24	35	-	90	50	50	17	22	3600	-	0,900	- 87,60 €

\* Depending on availability - Dimensions in mm

## Altri prodotti...



PRF\_BASE  
Elementi di ancoraggio, Basamento



CHAR16046  
Cerniera a molla, avvitabile



BLHM30  
Rinvio angolare, fino a 4.4 Nm



M1  
Vite senza fine, Acciaio temprato



P60  
Riduttore a ruota e vite senza fine, fino a 118 Nm



BPHFclip  
Sfera portante, Anello di fissaggio - montaggio dall'alto



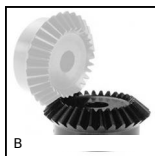
CLR  
Staffa di montaggio per molla a gas, Staffa di montaggio per forc...  
...



LWL  
Guida lineare a sfere - Sfere inox, Carello - da 514 N a 16700 N



HCV  
Sistema di guida su binario a V Simple Select®, con carrello



B  
Ingranaggio conico - Acciaio 60C40, 1:1



PLM-16A  
Magnete, Con foro maschiato



SUPccss  
Calettatore di bloccaggio autocentrante inox, Con ghiera

Prodotti correlati