

Hinge for aluminium profile

ACL-CHARJ

Adjusts in 2 directions

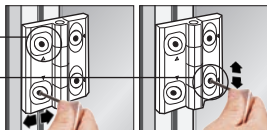
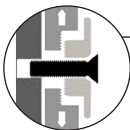
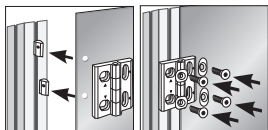
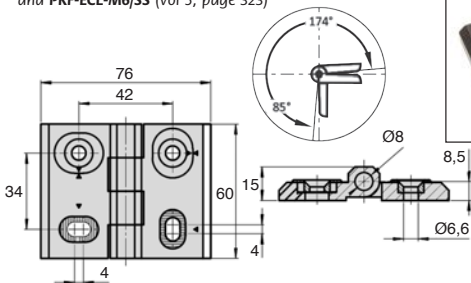
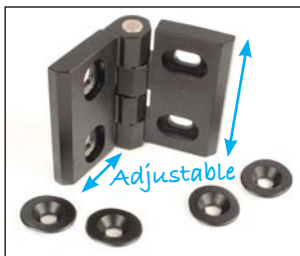
- Hinge that can be adjusted in 2 directions
- Allows precise positioning, both horizontally and vertically
- Materials:
Plates – Moulded zinc
Pin- stainless steel

Advantages

- This hinge can be adjusted in both the X and Y planes thanks to use of serrated oblong holes and serrated washers

Use

- Use M6 FHC screws (not supplied)
See **FHC6-16/SS** (Vol 1, page 427)
and **PRF-ECL-M6/SS** (Vol 5, page 323)



DISCOUNTS

Qty	1+	50+	100+
Disc	Net	+5%	On request

Part N°	Load FA max (N)	Load FR max (N)	Weight (g)	Stock*	Price each 1 to 49
Ajustable dans 2 directions					
ACL-CHARJ60-76	1200	2200	190	-	26,92 €

Altri prodotti...



DKGS
Giunto senza gioco
Gerwah®, da 0.5 a
3Nm



HLC24
Rinvio angolare a
dentatura spiroidale,
Fino a 78Nm



TAC_SS
Tenditore, Inox



BCM_TP
Spazzola cilindrica
modulare, Filo in
tampico



TPEpbd
Ruota per profili
alluminio, Girevole
con freno



AT5M AT10M
Cinghia aperta al
metro tipo AT, AT5
Poliuretano armatura
in acciaio



MFB_MHB
Ingranaggio conico in
plastica stampata ,
1.5:1



MCLred
Manicotto di
riduzione, Cilindrico -
inox



PTA50
Piede snodato con
base stampata Ø50, Ø
50



RHT
Ruota alte
temperature, fino a
200kg



GE
Chiusura a leva,
Standard



PFC
Piede fisso,
Livellamento per
piccoli elementi

Prodotti correlati



FHCSS
Vite a testa svasata
piana, Inox A2 - DIN
7991



PRF_ECL
Fissaggio, Dado
quadrato con
linguetta - Inox



PRF4545
Profilato alluminio
standard, 45 x 45 mm