

# Connection plate for aluminium profile

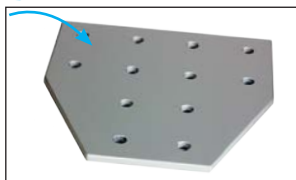
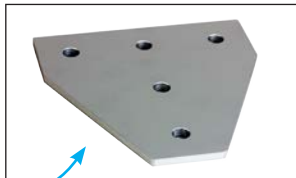
## Angle connection

## ACLPL

- Connection of 2 aluminium profiles
- Corner reinforcement
- Material:  
Anodised aluminium

### Info.

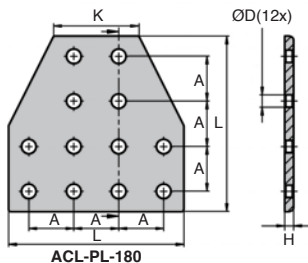
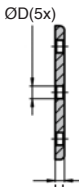
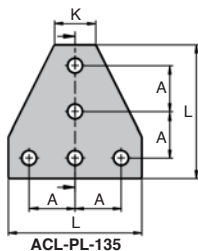
- Supplied without fixing kit (see button head screw BHC8-16/SS/B or BHC8-20/SS and slot nut PRF-ECL-M8/SS)



Anodised aluminium



Typical application



### DISCOUNTS

Qty	1+	50+	100+
Disc. Net		-5%	On request

Part N°	L	H	A	K	ØD	Weight (g)	Price each
ACL-PL-135	131	6	45	41	9	210	14,57 €
ACL-PL-180	176	6	45	86	9	425	23,94 €

All dimensions in mm

0 825 88 6000

Service 0,15 € / min  
+ prix appel

Fax

cial2@hpceurope.com

HPC

SUPPLEMENT 2019

243

## Altri prodotti...



**DKONSL**  
Piedino antivibrante  
conico silicone,  
Fissaggio maschio



**T10-BAR**  
Barra dentata, T10



**AT5M AT10M**  
Cinghia aperta al  
metro tipo AT, AT5  
Poliuretano armatura  
in acciaio



**BLH60**  
Rinvio angolare a L,  
da 19 a 70 Nm



**BABS303**  
Perno autobloccante  
inox 303, Inox 303



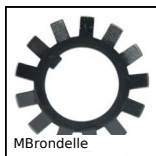
**WSSs**  
Gancio a S  
simmetrica, Inox



**CF**  
Perno folle, Standard -  
acciaio



**BPHT**  
Sfera portante  
fissaggio con perno  
filettato, Forte



**MBrondele**  
Cuscineti a sfere -  
Accessorio, Rondella  
di arresto MB



**BPPE**  
Sfera portante,  
Leggero



**LRR-53**  
Chiavistello con  
bloccaggio, Lucchetto  
a molla acciaio



**RJUM05**  
Supporto per boccola  
Drylin R®, Chiuso -  
Corto

## Prodotti correlati



**BHC**  
Vite a testa bombata  
BHC , Inox A2



**PRF\_ECL**  
Fissaggio, Dado  
quadrato con  
linguetta - Inox



**ACL-PL**  
Elementi di giunzione,  
Piastra di fissaggio -  
86x86 mm



**ACL-PL**  
Elementi di giunzione,  
Piastra di fissaggio -  
176x86 mm